



1112 2" Wide General Purposes Caster Series

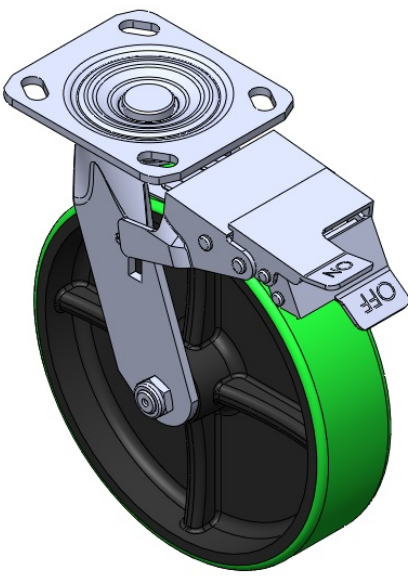
PU (green) Wheel Diameter × Wheel Width 200 x 49mm

EAN
TW-4111208004031

Equipped with front-brake locking Casters. Welded Caster Fork. Zine-Plated, Mounting Type - Top Plate. Cast Iron wheel Wheel Wheel Hub, High Quality Polyurethane Wheel Tread. Green, Ball Bearings.

Wheel surface: High-quality polyurethane
Wheel Center: Iron core/Cast iron core

Drawings are for reference only and may differ from the product



Picture may differ from original product

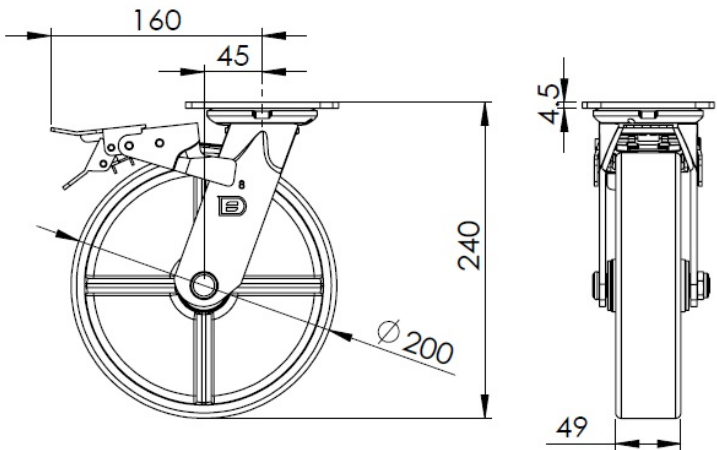
Technical Data

<input checked="" type="radio"/> Imperial <input type="radio"/> Metric	
Wheel Diameter	8 "
Wheel Width	2 "
Wheel Bearing	Wheel With Annual Ball Bearing
Plate Size	4-9/16 " x 4 "
Bolt Hole Spacing	3-3/8 " x 2-3/4 "
Plate Hole	13/16 x " 3/8 "
Offset	1-13/16 "
Swivel Interference	12-11/16 "
Overall Height	9-1/2 "
Swivel Radius	5-13/16 "
Hardness Of Tread	92±5° Shore A
Load Capacity (Dynamic)	926lbs
Load Capacity (Static)	1389lbs
Temperature	-4°F to +158°F
Fork Type	Swivel Caster With Front Brake
Stainless	N/A
Electrical Conductivity	N/A
Anti-Static	N/A
Weight	10.6lbs
Standard	ISO22883

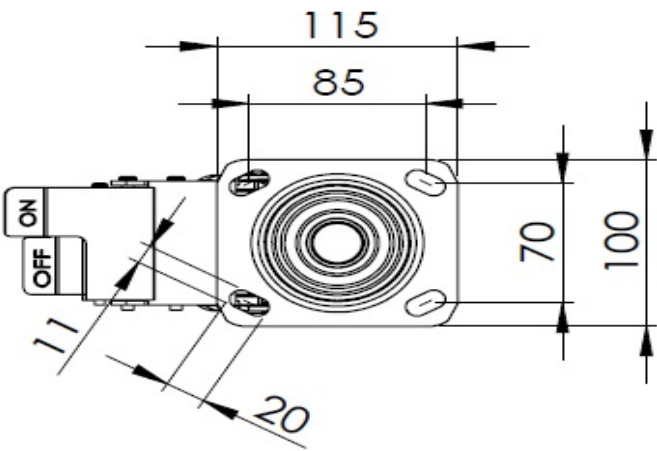
Advantages at a glance

Rolling Resistance	● ● ● ○ ○
Operating Noise	● ● ● ● ○
Floor Surface Preservation	● ● ● ● ○

Dimensions



Mounting



* For any deviation between metric and imperial spec, please refer to the metric spec.