



1112 2" Wide General Purposes Caster Series

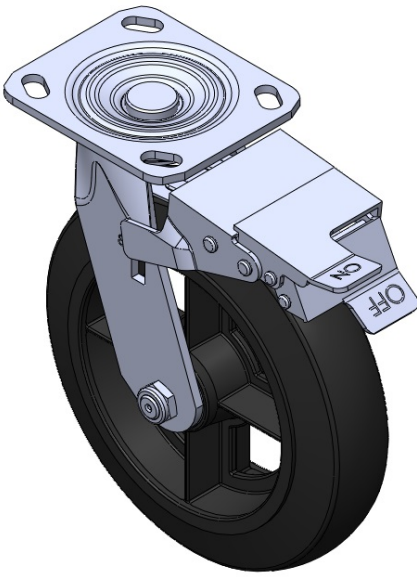
Rubber (black) Wheel Diameter × Wheel Width 202 x 50mm

EAN
TW-4111208004033

Equipped with front brake, locking Casters. Welded Caster Fork. Zine-Plated, Mounting Type - Top Plate. Cast Iron wheel Wheel Wheel Hub, High-Quality Resilient Rubber rims. Black, Bearing—Annual Ball Bearings.

Wheel surface: High-quality elastic rubber
Wheel Center: Iron core / Cast iron core

Drawings are for reference only and may differ from the product



Picture may differ from original product

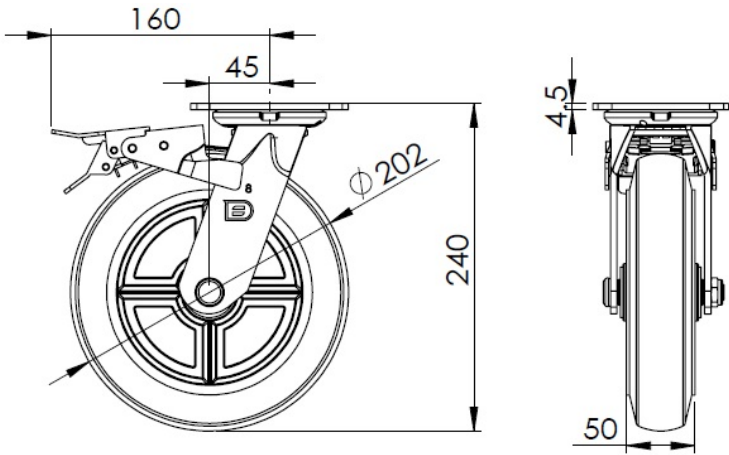
Technical Data

| | |
|--|--------------------------------|
| <input checked="" type="radio"/> Metric <input type="radio"/> Imperial | |
| Wheel Diameter | 202mm |
| Wheel Width | 50mm |
| Wheel Bearing | Wheel With Annual Ball Bearing |
| Plate Size | 115 x 100mm |
| Bolt Hole Spacing | 85 x 70mm |
| Plate Hole | 20 x 11mm |
| Offset | 45mm |
| Swivel Interference | 320mm |
| Overall Height | 240mm |
| Swivel Radius | 145mm |
| Hardness Of Tread | 80±5° Shore A |
| Load Capacity (Dynamic) | 300kgs |
| Load Capacity (Static) | 450kgs |
| Temperature | -20°C to +120°C |
| Fork Type | Swivel Caster With Front Brake |
| Stainless | N/A |
| Electrical Conductivity | N/A |
| Anti-Static | N/A |
| Weight | 4.80kgs |
| Standard | ISO22883 |

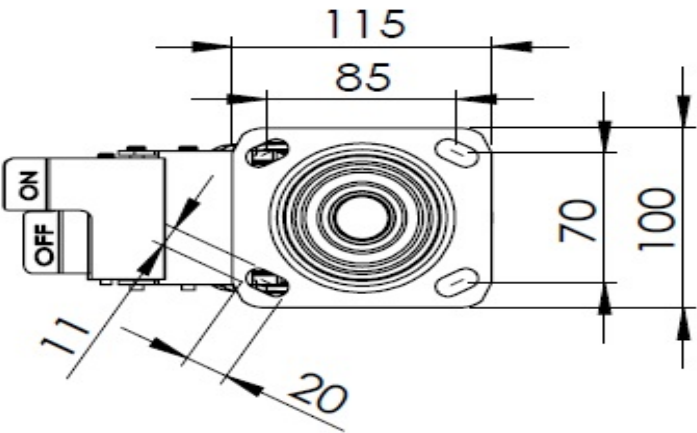
Advantages at a glance

| | |
|----------------------------|-----------|
| Rolling Resistance | ● ● ● ○ ○ |
| Operating Noise | ● ● ● ● ○ |
| Floor Surface Preservation | ● ● ● ● ○ |

Dimensions



Mounting



* For any deviation between metric and imperial spec, please refer to the metric spec.