



1112 2" Wide General Purposes Caster Series

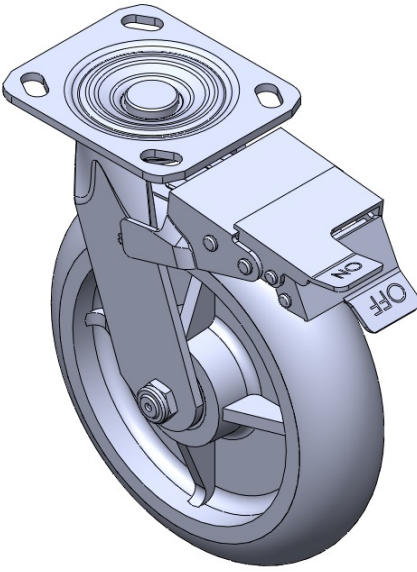
PPR (grey) Wheel Diameter × Wheel Width 200 x 50mm

EAN  
TW-4111208004036

Equipped with front brake, locking Casters. Welded Caster Fork. Zine-Plated, Mounting Type - Top Plate - no brand, side holes, grease fittings. High-Quality Impact-Resistant Polypropylene Wheel Center, High-Quality Reinforced Polypropylene Rubber (TPR) wheel rim. Gray, Bearing - Annual Ball Bearing joints.

Wheel tread: Thermoplastic rubber elastomer (TPR)  
Wheel Center: Made of high-quality impact-resistant polypropylene

Drawings are for reference only and may differ from the product



Picture may differ from original product

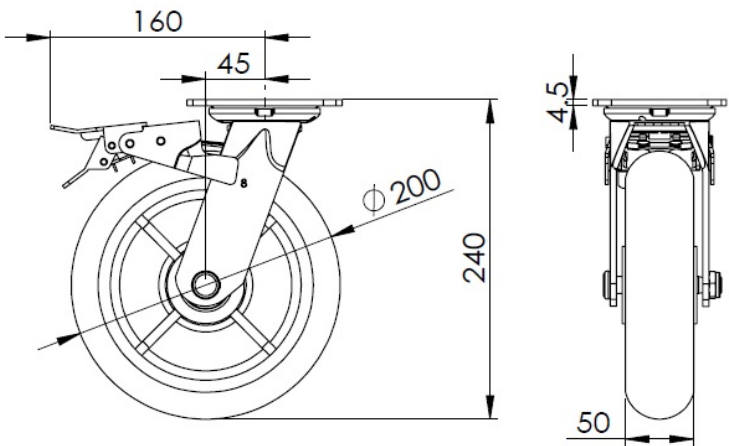
Technical Data

<input checked="" type="radio"/> Metric <input type="radio"/> Imperial	
Wheel Diameter	200mm
Wheel Width	50mm
Wheel Bearing	Wheel With Annual Ball Bearing
Plate Size	115 x 100mm
Bolt Hole Spacing	85 x 70mm
Plate Hole	20 x 11mm
Offset	45mm
Swivel Interference	320mm
Overall Height	240mm
Swivel Radius	145mm
Hardness Of Tread	82±5° Shore A
Load Capacity (Dynamic)	185kgs
Load Capacity (Static)	278kgs
Temperature	-20°C to +60°C
Fork Type	Swivel Caster With Front Brake
Stainless	N/A
Electrical Conductivity	N/A
Anti-Static	N/A
Weight	3.0kgs
Standard	ISO22883

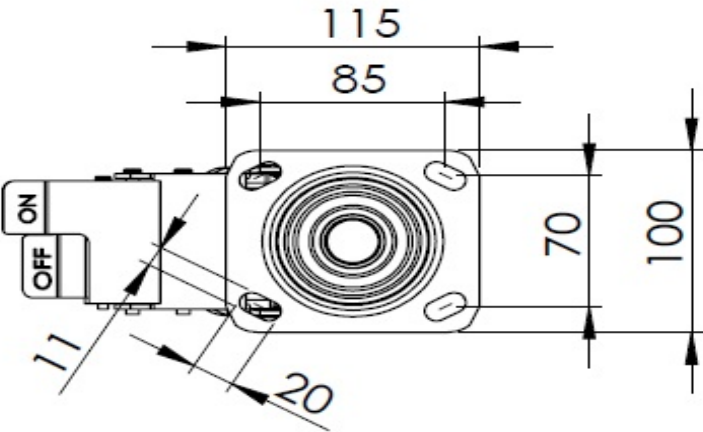
Advantages at a glance

Rolling Resistance	● ● ● ● ○
Operating Noise	● ● ● ● ○
Floor Surface Preservation	● ● ● ● ●

Dimensions



Mounting



\* For any deviation between metric and imperial spec, please refer to the metric spec.