



1112 2" Wide General Purposes Caster Series

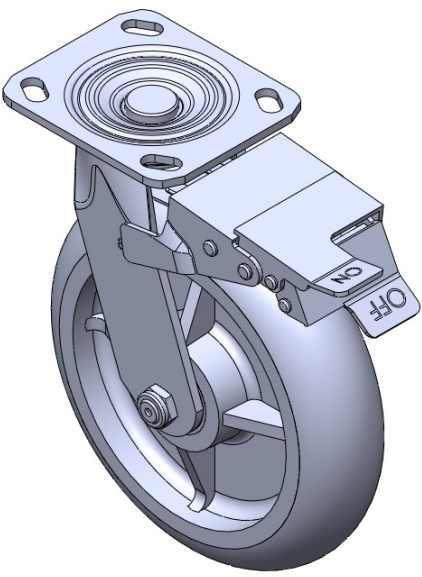
PPR (grey) Wheel Diameter × Wheel Width 200 x 50mm

EAN
TW-4111208004036

Equipped with front brake, locking Casters. Welded Caster Fork. Zine-Plated, Mounting Type - Top Plate - no brand, side holes, grease fittings. High-Quality Impact-Resistant Polypropylene Wheel Center, High-Quality Reinforced Polypropylene Rubber (TPR) wheel rim. Gray, Bearing - Annual Ball Bearing joints.

Wheel tread: Thermoplastic rubber elastomer (TPR)
Wheel Center: Made of high-quality impact-resistant polypropylene

Drawings are for reference only and may differ from the product



Picture may differ from original product

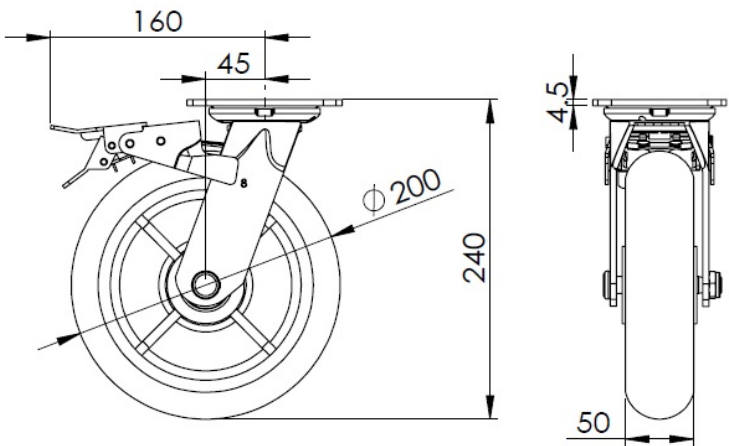
Technical Data

<input checked="" type="radio"/> Imperial <input type="radio"/> Metric	
Wheel Diameter	8 "
Wheel Width	2 "
Wheel Bearing	Wheel With Annual Ball Bearing
Plate Size	4-9/16 " x 4 "
Bolt Hole Spacing	3-3/8 " x 2-3/4 "
Plate Hole	13/16 x " 3/8 "
Offset	1-13/16 "
Swivel Interference	12-11/16 "
Overall Height	9-1/2 "
Swivel Radius	5-13/16 "
Hardness Of Tread	82±5° Shore A
Load Capacity (Dynamic)	408lbs
Load Capacity (Static)	613lbs
Temperature	-4°F to +140°F
Fork Type	Swivel Caster With Front Brake
Stainless	N/A
Electrical Conductivity	N/A
Anti-Static	N/A
Weight	6.6lbs
Standard	ISO22883

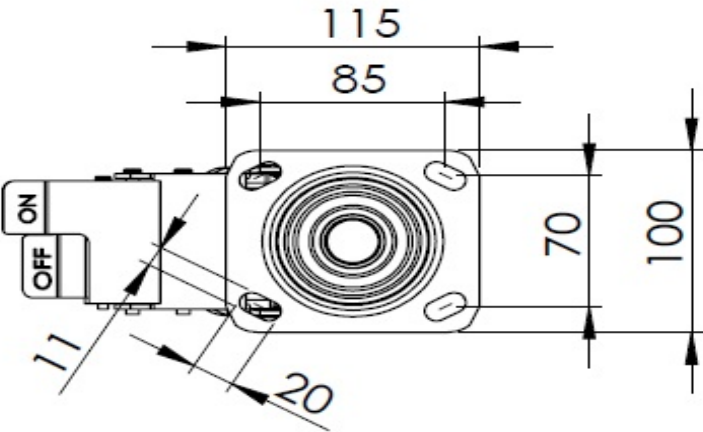
Advantages at a glance

Rolling Resistance	● ● ● ● ○
Operating Noise	● ● ● ● ○
Floor Surface Preservation	● ● ● ● ●

Dimensions



Mounting



* For any deviation between metric and imperial spec, please refer to the metric spec.