

1116-SS-LI Light Duty Stainless Steel Caster Series



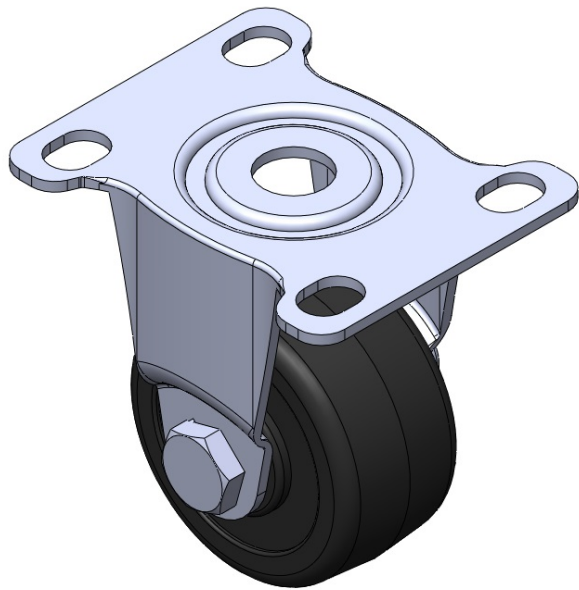
Nylon Wheel Diameter × Wheel Width 50 x 25mm

EAN
TW-4111602001004

Rigid Casters, Stamping Fabricated Caster Fork; surface vibration, Mounting Type - Top Plate device; thermoplastic plastic Wheel Center and Wheel Tread; black, Plain Bearings.

Wheel surface: made of thermoplastic plastic
Wheel Center: made of thermoplastic plastic

Drawings are for reference only and may differ from the product



Picture may differ from original product

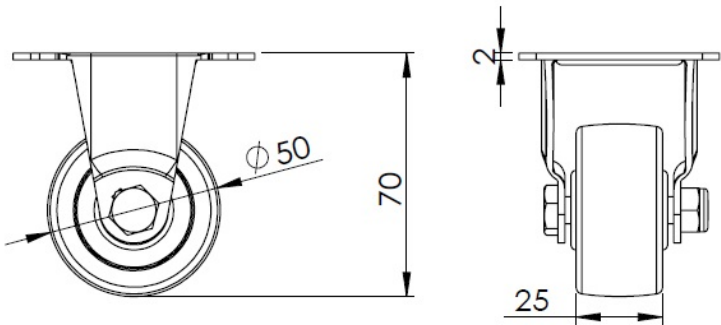
Technical Data

<input checked="" type="radio"/> Imperial <input type="radio"/> Metric	
Wheel Diameter	2 "
Wheel Width	5-1/25 "
Wheel Bearing	Wheel With Plain Bearing
Plate Size	2-13/16 " x 2-5/16 "
Bolt Hole Spacing	2-1/8 " x 1-1/2 "
Plate Hole	1/2 " x 23/64 "
Overall Height	5-7/16 "
Hardness Of Tread	75±5° Shore D
Load Capacity (Dynamic)	154lbs
Load Capacity (Static)	231lbs
Temperature	-4°F to +176°F
Fork Type	Rigid Caster
Stainless	Y
Electrical Conductivity	N/A
Anti-Static	N/A
Weight	0.4lbs
Standard	ISO22883

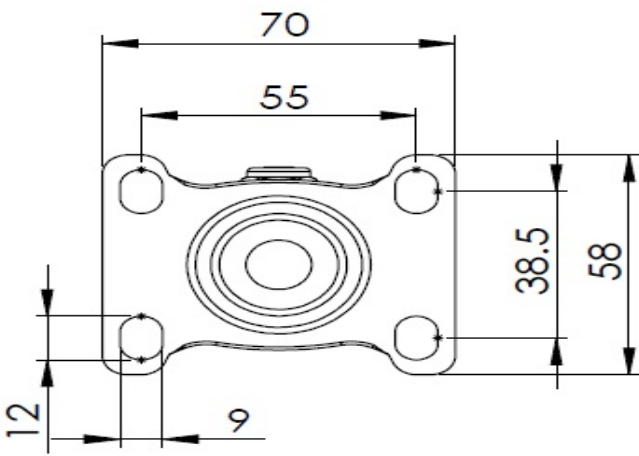
Advantages at a glance

Rolling Resistance	● ● ● ● ●
Operating Noise	● ● ○ ○ ○
Floor Surface Preservation	● ● ○ ○ ○

Dimensions



Mounting



* For any deviation between metric and imperial spec, please refer to the metric spec.