



1116-SS-LI Light Duty Stainless Steel Caster Series

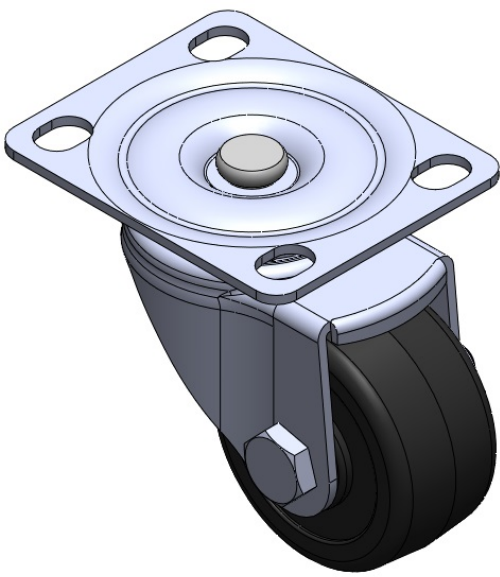
Nylon Wheel Diameter × Wheel Width 50 x 25mm

EAN
TW-4111602002005

Swivel Casters, Riveted and Stamping Fork. Surface vibration, Mounting Type - Top Plate device. Reinforced Polypropylene and Wheel Tread. Black, Plain Bearings.

Wheel surface: made of thermoplastic plastic
Wheel Center: made of thermoplastic plastic

Drawings are for reference only and may differ from the product



Picture may differ from original product

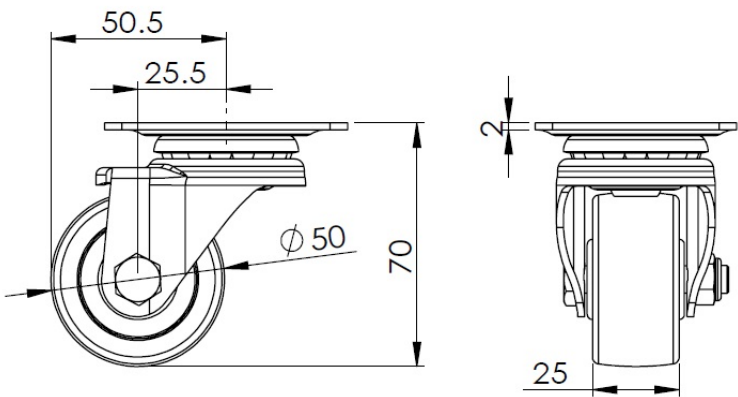
Technical Data

<input checked="" type="radio"/> Metric <input type="radio"/> Imperial	
Wheel Diameter	50mm
Wheel Width	25mm
Wheel Bearing	Wheel With Plain Bearing
Plate Size	70 x 58mm
Bolt Hole Spacing	55 x 38.5mm
Plate Hole	11.5 x 8.5mm
Offset	25.5mm
Swivel Interference	101mm
Overall Height	70mm
Swivel Radius	50.5mm
Hardness Of Tread	75±5° Shore D
Load Capacity (Dynamic)	70kgs
Load Capacity (Static)	105kgs
Temperature	-20°C to +80°C
Fork Type	Swivel Caster
Stainless	Y
Electrical Conductivity	N/A
Anti-Static	N/A
Weight	0.25kgs
Standard	ISO22883

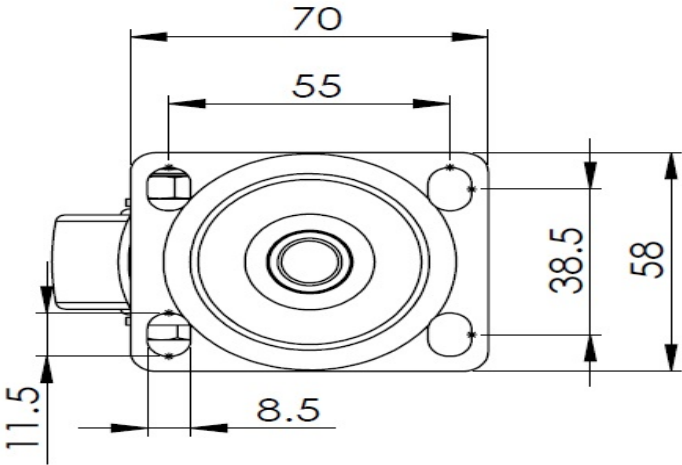
Advantages at a glance

Rolling Resistance	● ● ● ● ●
Operating Noise	● ● ○ ○ ○
Floor Surface Preservation	● ● ○ ○ ○

Dimensions



Mounting



* For any deviation between metric and imperial spec, please refer to the metric spec.