



1116-SS-LI Light Duty Stainless Steel Caster Series

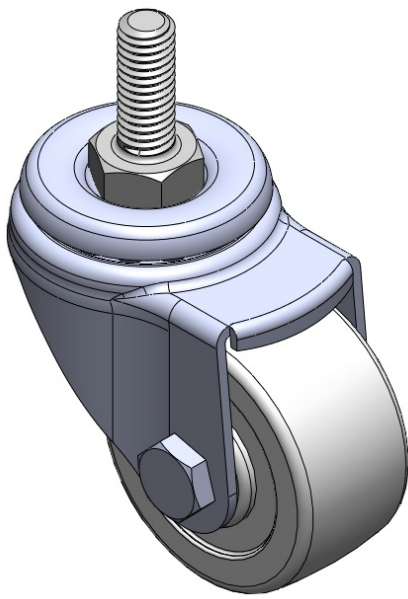
Nylon Wheel Diameter × Wheel Width 50 x 25mm

EAN  
TW-4111602002006

Swivel Casters, Threaded Stem Stamping Fork—3/8"-16 thread; surface vibration resistant, Mounting Type - Threaded Stem; thermoplastic Wheel Center and rim; white; Plain Bearings.

Wheel surface: made of thermoplastic plastic  
Wheel Center: made of thermoplastic plastic

Drawings are for reference only and may differ from the product



Picture may differ from original product

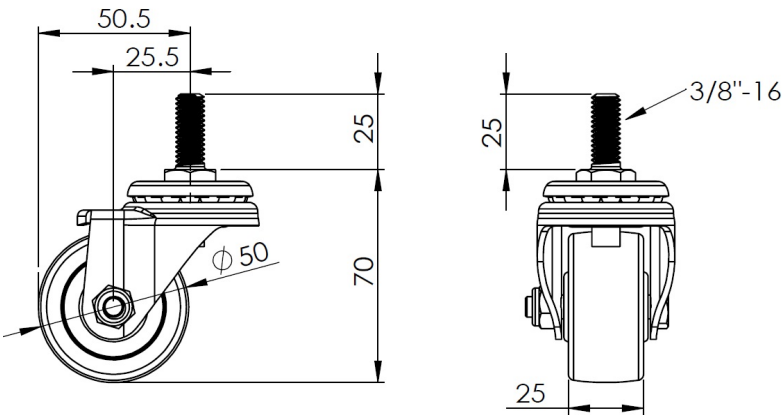
Technical Data

<input checked="" type="radio"/> Metric <input type="radio"/> Imperial	
Wheel Diameter	50mm
Wheel Width	25mm
Wheel Bearing	Wheel With Plain Bearing
Threaded Stem	3/8 " -16
Threaded Length	25mm
Offset	25.5mm
Swivel Interference	101mm
Overall Height	70mm
Swivel Radius	50.5mm
Hardness Of Tread	75±5° Shore D
Load Capacity (Dynamic)	70kgs
Load Capacity (Static)	105kgs
Temperature	-20°C to +80°C
Fork Type	Swivel Caster
Stainless	Y
Electrical Conductivity	N/A
Anti-Static	N/A
Weight	0.20kgs
Standard	ISO22883

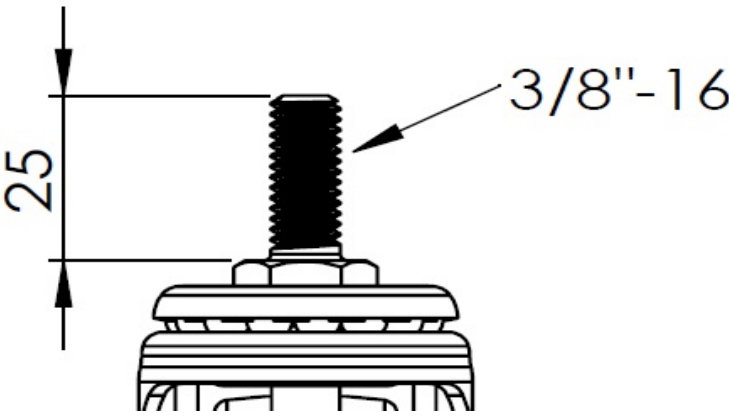
Advantages at a glance

Rolling Resistance	● ● ● ● ●
Operating Noise	● ● ○ ○ ○
Floor Surface Preservation	● ● ○ ○ ○

Dimensions



Mounting



\* For any deviation between metric and imperial spec, please refer to the metric spec.