



1116-SS-LI Light Duty Stainless Steel Caster Series

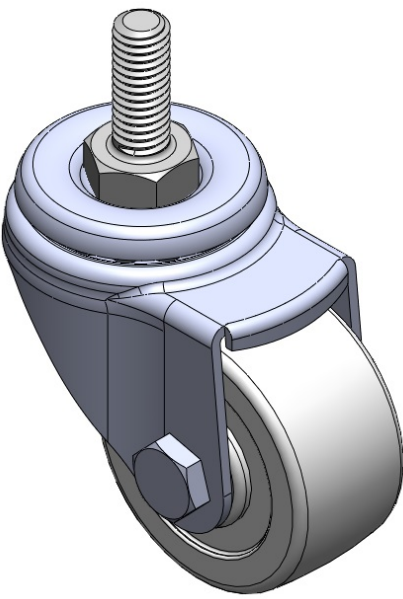
Nylon Wheel Diameter × Wheel Width 50 x 25mm

EAN  
TW-4111602002006

Swivel Casters, Threaded Stem Stamping Fork—3/8"-16 thread; surface vibration resistant, Mounting Type - Threaded Stem; thermoplastic Wheel Center and rim; white; Plain Bearings.

Wheel surface: made of thermoplastic plastic  
Wheel Center: made of thermoplastic plastic

Drawings are for reference only and may differ from the product



Picture may differ from original product

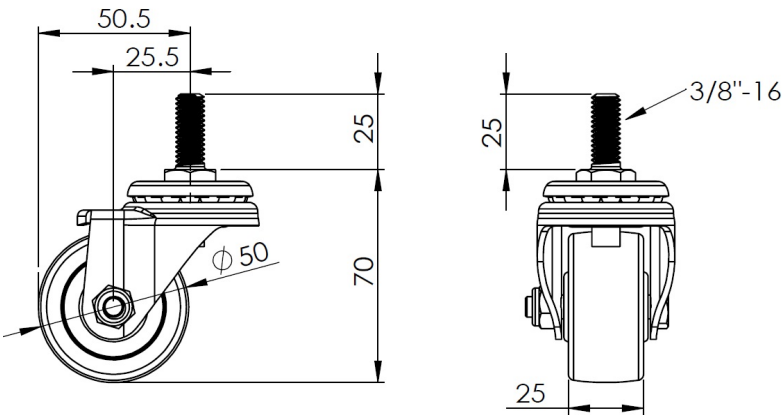
Technical Data

<input checked="" type="radio"/> Imperial <input type="radio"/> Metric	
Wheel Diameter	2 "
Wheel Width	1 "
Wheel Bearing	Wheel With Plain Bearing
Threaded Stem	3/8 " -16
Threaded Length	1 "
Offset	1-1/16 "
Swivel Interference	4 "
Overall Height	2-13/16 "
Swivel Radius	2 "
Hardness Of Tread	75±5° Shore D
Load Capacity (Dynamic)	154lbs
Load Capacity (Static)	231lbs
Temperature	-4°F to +176°F
Fork Type	Swivel Caster
Stainless	Y
Electrical Conductivity	N/A
Anti-Static	N/A
Weight	0.4lbs
Standard	ISO22883

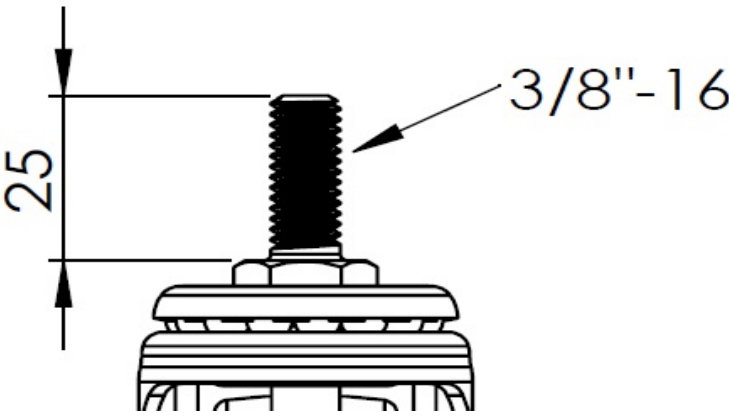
Advantages at a glance

Rolling Resistance	● ● ● ● ●
Operating Noise	● ● ○ ○ ○
Floor Surface Preservation	● ● ○ ○ ○

Dimensions



Mounting



\* For any deviation between metric and imperial spec, please refer to the metric spec.