

1116-SS-MI Medium Duty Institutional Stainless Steel Caster Series



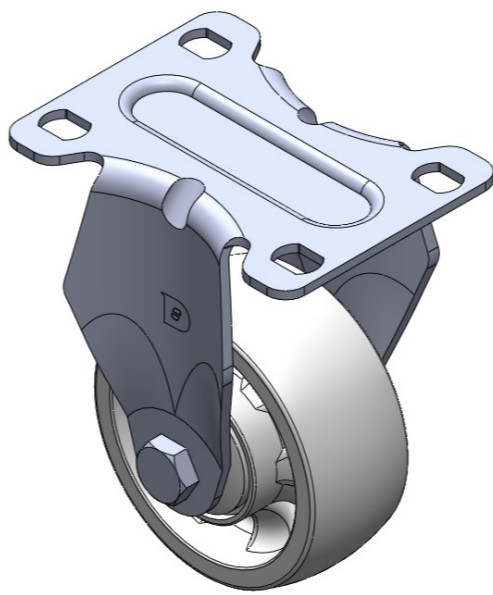
WMRC Wheel Diameter × Wheel Width 75 x 31mm

EAN
TW-4111603001018

Rigid Casters, Stamping Fabricated Caster Fork — high-grade perforation Surface vibration, Mounting Type - Top Plate device Reinforced thermoplastic Wheel Center and Wheel Tread (Zine-Plated iron bearing) White, Bearing — Ball Bearing.

Wheel surface: thermoplastic
Wheel Center: thermoplastic

Drawings are for reference only and may differ from the product



Picture may differ from original product

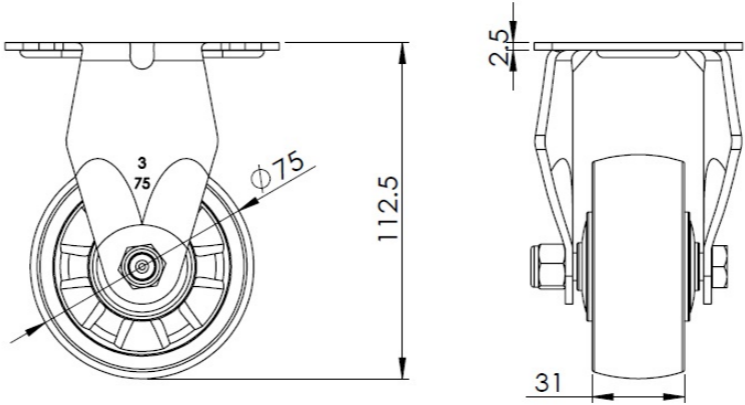
Technical Data

| | |
|--|---------------------------|
| <input checked="" type="radio"/> Metric <input type="radio"/> Imperial | |
| Wheel Diameter | 75mm |
| Wheel Width | 31mm |
| Wheel Bearing | Wheels With Ball Bearings |
| Plate Size | 92 x 70mm |
| Bolt Hole Spacing | 75 x 45mm |
| Plate Hole | 12 x 9mm |
| Overall Height | 112.5mm |
| Hardness Of Tread | 75±5° Shore D |
| Load Capacity (Dynamic) | 125kgs |
| Load Capacity (Static) | 187.5kgs |
| Temperature | -20°C to +80°C |
| Fork Type | Rigid Caster |
| Stainless | Y |
| Electrical Conductivity | N/A |
| Anti-Static | N/A |
| Weight | 0.40kgs |
| Standard | ISO22883 |

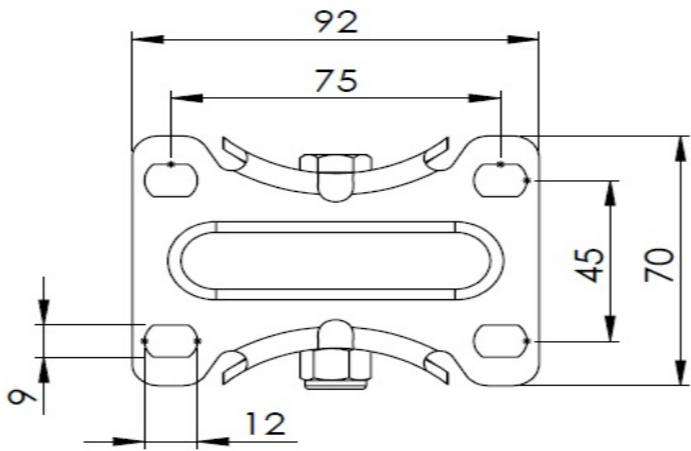
Advantages at a glance

| | |
|----------------------------|-----------|
| Rolling Resistance | ● ● ● ● ● |
| Operating Noise | ● ● ○ ○ ○ |
| Floor Surface Preservation | ● ● ○ ○ ○ |

Dimensions



Mounting



* For any deviation between metric and imperial spec, please refer to the metric spec.