

1116-SS-MI Medium Duty Institutional Stainless Steel Caster Series



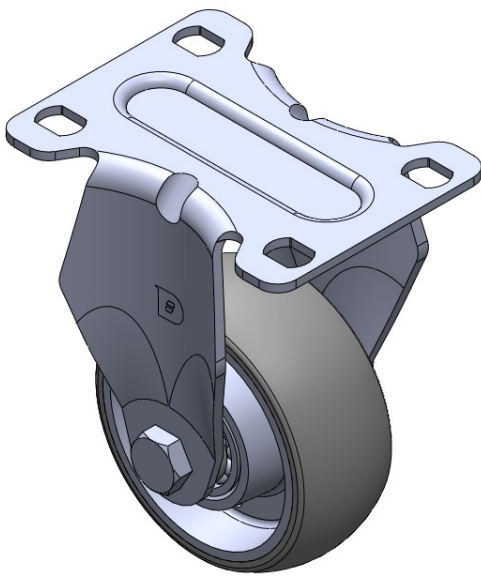
AQPU (grey) Wheel Diameter × Wheel Width 75 x 31mm

EAN
TW-4111603001030

Rigid Casters, Stamping Fabricated Caster Fork — high-grade perforated design
Surface vibration, Mounting Type - Top Plate Aluminum wheel center, High Quality
Polyurethane Wheel Tread Gray, Bearing — Ball Bearings.

Wheel surface: High-quality polyurethane
Wheel Center: Aluminum core

Drawings are for reference only and may differ from the product



Picture may differ from original product

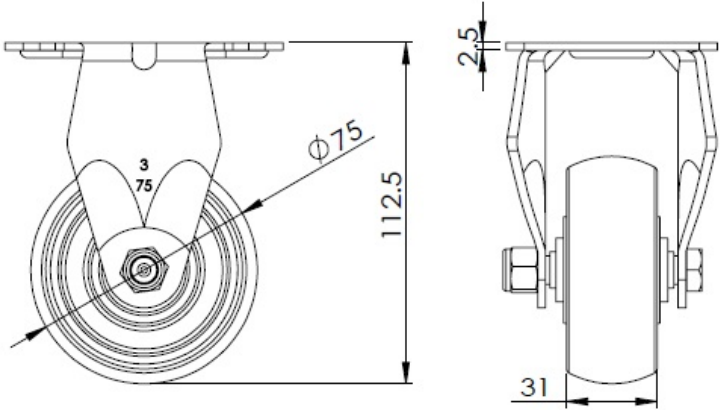
Technical Data

<input checked="" type="radio"/> Metric <input type="radio"/> Imperial	
Wheel Diameter	75mm
Wheel Width	31mm
Wheel Bearing	Wheels With Ball Bearings
Plate Size	92 x 70mm
Bolt Hole Spacing	75 x 45mm
Plate Hole	12 x 9mm
Overall Height	112.5mm
Hardness Of Tread	77±5° Shore A
Load Capacity (Dynamic)	125kgs
Load Capacity (Static)	187.5kgs
Temperature	-20°C to +70°C
Fork Type	Rigid Caster
Stainless	Y
Electrical Conductivity	N/A
Anti-Static	N/A
Weight	0.45kgs
Standard	ISO22883

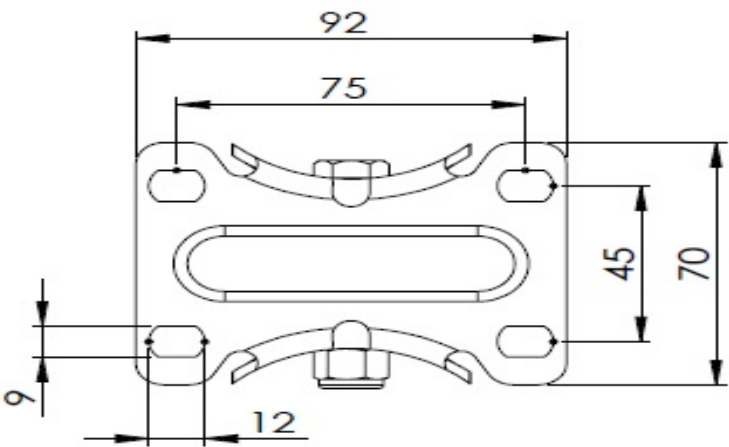
Advantages at a glance

Rolling Resistance	• • • • •
Operating Noise	• • • • •
Floor Surface Preservation	• • • • •

Dimensions



Mounting



* For any deviation between metric and imperial spec, please refer to the metric spec.