

1116-SS-MI Medium Duty Institutional Stainless Steel Caster Series



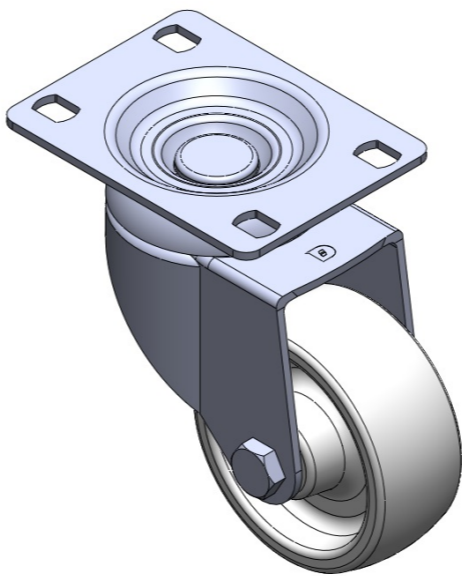
Nylon Wheel Diameter × Wheel Width 75 x 31mm

EAN  
TW-4111603002003

Swivel Casters, Riveted and Stamping Top Plate—high-grade perforated design. Surface vibration, Mounting Type - Top Plate device. Reinforced Polypropylene and rim. White, wheels—Plain Bearing.

Wheel surface: made of thermoplastic plastic  
Wheel Center: made of thermoplastic plastic

Drawings are for reference only and may differ from the product



Picture may differ from original product

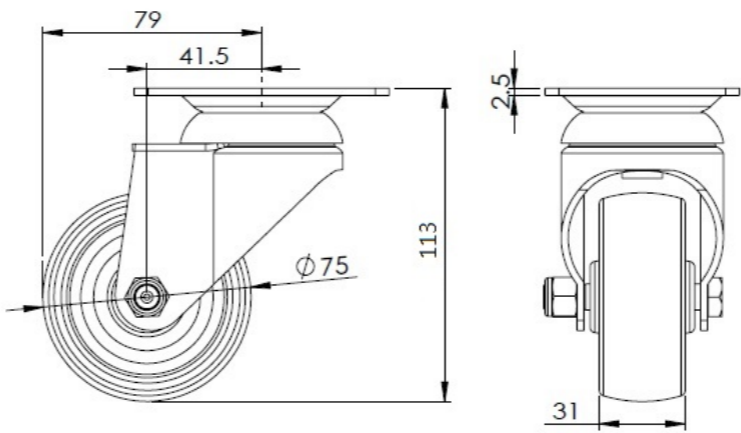
Technical Data

<input checked="" type="radio"/> Metric <input type="radio"/> Imperial	
Wheel Diameter	75mm
Wheel Width	31mm
Wheel Bearing	Wheel With Plain Bearing
Plate Size	92 x 70mm
Bolt Hole Spacing	75 x 45mm
Plate Hole	12 x 9mm
Offset	41.5mm
Swivel Interference	158mm
Overall Height	113mm
Swivel Radius	79mm
Hardness Of Tread	75±5° Shore D
Load Capacity (Dynamic)	100kgs
Load Capacity (Static)	150kgs
Temperature	-20°C to +80°C
Fork Type	Swivel Caster
Stainless	Y
Electrical Conductivity	N/A
Anti-Static	N/A
Weight	0.65kgs
Standard	ISO22883

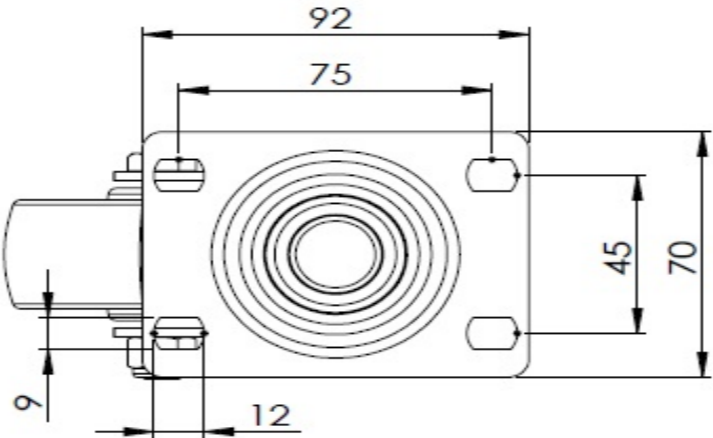
Advantages at a glance

Rolling Resistance	● ● ● ● ●
Operating Noise	● ● ○ ○ ○
Floor Surface Preservation	● ● ○ ○ ○

Dimensions



Mounting



\* For any deviation between metric and imperial spec, please refer to the metric spec.