

1116-SS-MI Medium Duty Institutional Stainless Steel Caster Series



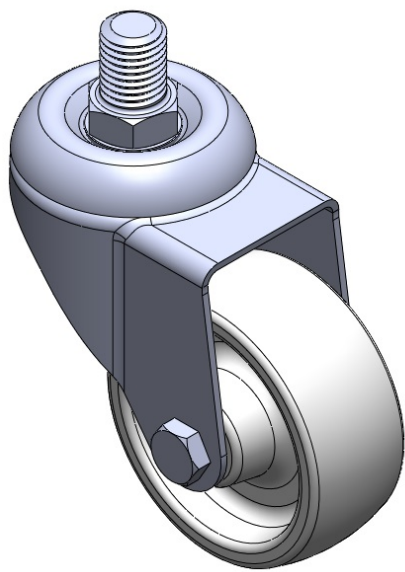
Nylon Wheel Diameter × Wheel Width 75 x 31mm

EAN
TW-4111603002004

Swivel Casters, Threaded Stem Stamping Fork—M16xP2.0 Surface vibration, Mounting Type - Threaded Stem device Reinforced Polypropylene and rim White, Plain Bearings.

Wheel surface: made of thermoplastic plastic
Wheel Center: made of thermoplastic plastic

Drawings are for reference only and may differ from the product



Picture may differ from original product

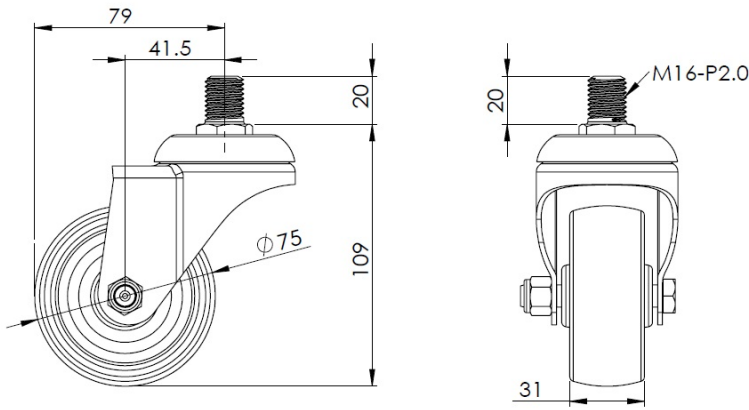
Technical Data

<input checked="" type="radio"/> Imperial <input type="radio"/> Metric	
Wheel Diameter	3 "
Wheel Width	1-1/4 "
Wheel Bearing	Wheel With Plain Bearing
Threaded Stem	M16xP2.0
Threaded Length	13/16 "
Offset	1-11/16 "
Swivel Interference	6-5/16 "
Overall Height	4-3/8 "
Swivel Radius	3-1/8 "
Hardness Of Tread	75±5° Shore D
Load Capacity (Dynamic)	220lbs
Load Capacity (Static)	331lbs
Temperature	-4°F to +176°F
Fork Type	Swivel Caster
Stainless	Y
Electrical Conductivity	N/A
Anti-Static	N/A
Weight	1.2lbs
Standard	ISO22883

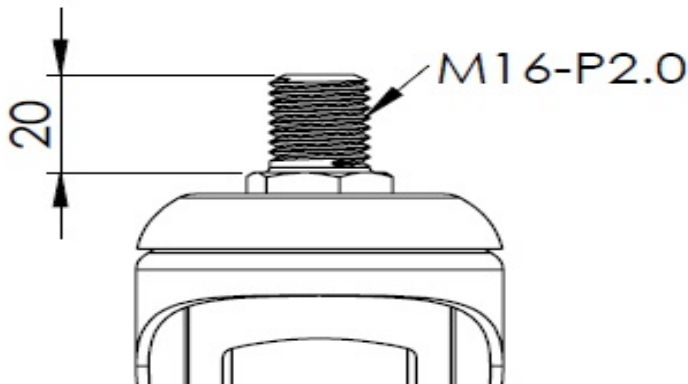
Advantages at a glance

Rolling Resistance	● ● ● ● ●
Operating Noise	● ● ○ ○ ○
Floor Surface Preservation	● ● ○ ○ ○

Dimensions



Mounting



* For any deviation between metric and imperial spec, please refer to the metric spec.