

1116-SS-MI Medium Duty Institutional Stainless Steel Caster Series



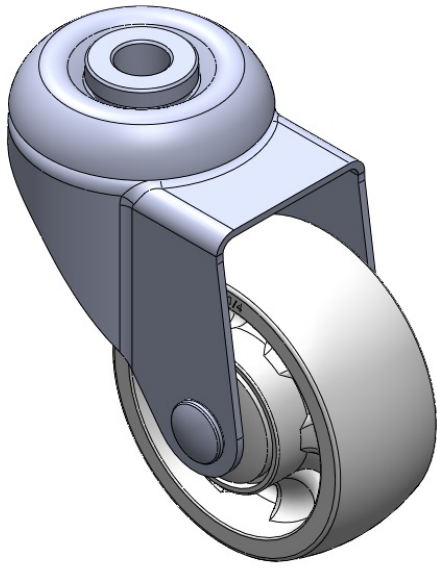
WMRC (Transparent) Wheel Diameter × Wheel Width 75 x 31mm

EAN  
TW-4111603002028

Swivel Casters, Single Bolthole Stamping Fork—hollow Ø12.2 hole; surface vibration damping, interlocking Mounting Type device; reinforced thermoplastic Wheel Center and Wheel Tread; white, Bearing—Ball Bearings.

Wheel surface: Thermoplastic  
Wheel hub: Thermoplastic

Drawings are for reference only and may differ from the product



Picture may differ from original product

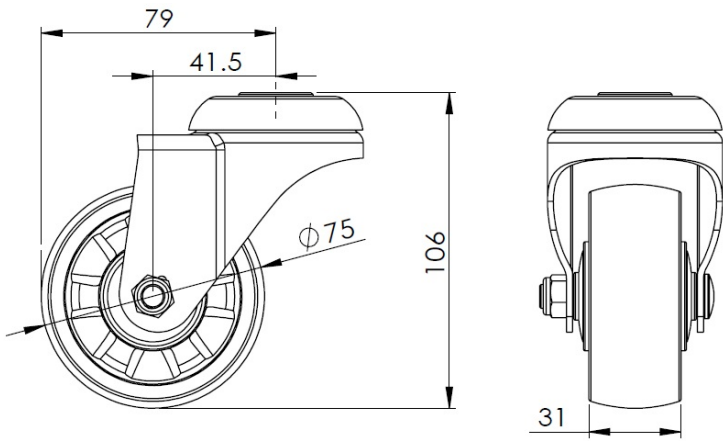
Technical Data

<input checked="" type="radio"/> Metric <input type="radio"/> Imperial	
Wheel Diameter	75mm
Wheel Width	31mm
Wheel Bearing	Wheels With Ball Bearings
Single Bolt HoleCentre Hole	12.2mm
Offset	41.5mm
Swivel Interference	158mm
Overall Height	106mm
Swivel Radius	79mm
Hardness Of Tread	75±5° Shore D
Load Capacity (Dynamic)	160kgs
Load Capacity (Static)	240kgs
Temperature	-20°C to +80°C
Fork Type	Swivel Caster
Stainless	Y
Electrical Conductivity	N/A
Anti-Static	N/A
Weight	0.50kgs
Standard	ISO22883

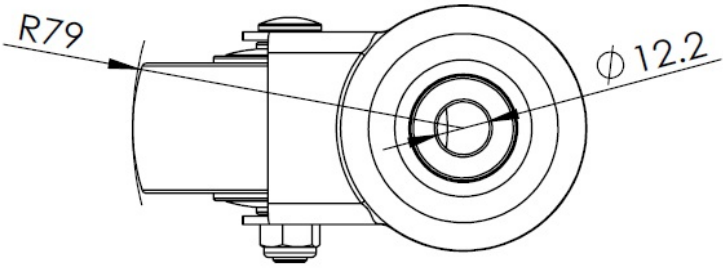
Advantages at a glance

Rolling Resistance	● ● ● ● ●
Operating Noise	● ● ○ ○ ○
Floor Surface Preservation	● ● ○ ○ ○

Dimensions



Mounting



\* For any deviation between metric and imperial spec, please refer to the metric spec.