

1116-SS-MI Medium Duty Institutional Stainless Steel Caster Series



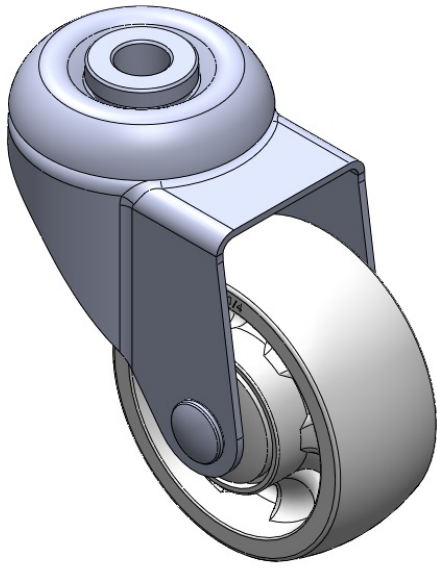
WMRC (Transparent) Wheel Diameter × Wheel Width 75 x 31mm

EAN  
TW-4111603002028

Swivel Casters, Single Bolthole Stamping Fork—hollow Ø12.2 hole; surface vibration damping, interlocking Mounting Type device; reinforced thermoplastic Wheel Center and Wheel Tread; white, Bearing—Ball Bearings.

Wheel surface: Thermoplastic  
Wheel hub: Thermoplastic

Drawings are for reference only and may differ from the product



Picture may differ from original product

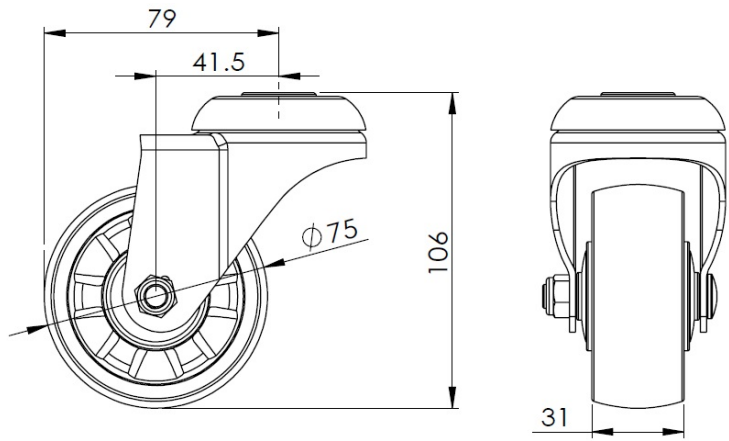
Technical Data

|  |                           |
|--|---------------------------|
| <input checked="" type="radio"/> Imperial <input type="radio"/> Metric |                           |
| Wheel Diameter   | 3 "                       |
| Wheel Width  | 1-1/4 "                   |
| Wheel Bearing  | Wheels With Ball Bearings |
| Single Bolt HoleCentre Hole  | 1/2 "                     |
| Offset   | 1-11/16 "                 |
| Swivel Interference  | 6-5/16 "                  |
| Overall Height   | 4-1/4 "                   |
| Swivel Radius  | 3-1/8 "                   |
| Hardness Of Tread  | 75±5° Shore D             |
| Load Capacity (Dynamic)  | 353lbs                    |
| Load Capacity (Static)   | 529lbs                    |
| Temperature  | -4°F to +176°F            |
| Fork Type  | Swivel Caster             |
| Stainless  | Y                         |
| Electrical Conductivity  | N/A                       |
| Anti-Static  | N/A                       |
| Weight   | 1.1lbs                    |
| Standard   | ISO22883                  |

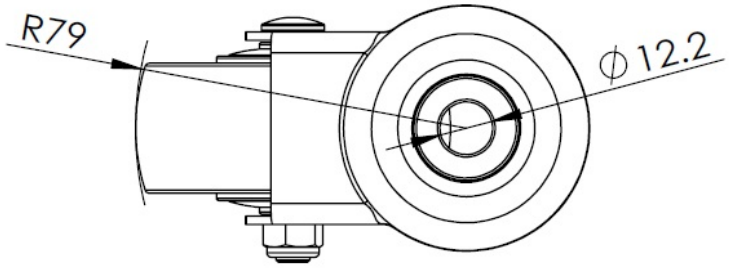
Advantages at a glance

|                            |           |
|----------------------------|-----------|
| Rolling Resistance         | ● ● ● ● ● |
| Operating Noise            | ● ● ○ ○ ○ |
| Floor Surface Preservation | ● ● ○ ○ ○ |

Dimensions



Mounting



\* For any deviation between metric and imperial spec, please refer to the metric spec.