

1116-SS-MI Medium Duty Institutional Stainless Steel Caster Series



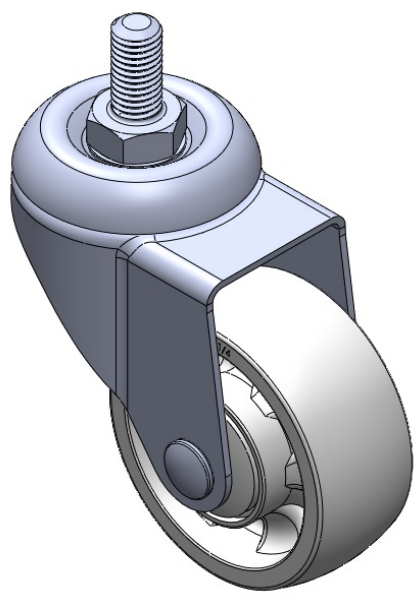
WMRC Wheel Diameter × Wheel Width 75 x 31mm

EAN
TW-4111603002036

Swivel Casters, Threaded Stem Stamping Fork—M12-P1.75; surface vibration damping, Mounting Type - Threaded Stem; reinforced thermoplastic Wheel Center and rim; white; Bearing—Ball Bearings.

Wheel surface: Thermoplastic
Wheel hub: Thermoplastic

Drawings are for reference only and may differ from the product



Picture may differ from original product

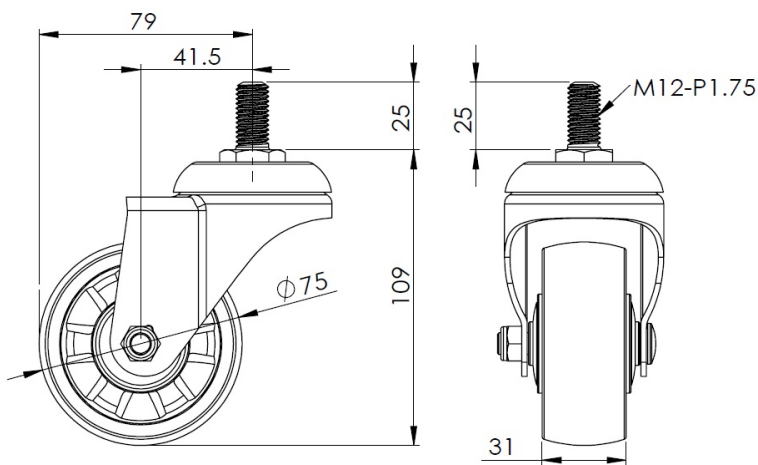
Technical Data

<input checked="" type="radio"/> Metric <input type="radio"/> Imperial	
Wheel Diameter	75mm
Wheel Width	31mm
Wheel Bearing	Wheels With Ball Bearings
Threaded Stem	M12-P1.75
Threaded Length	25mm
Offset	41.5mm
Swivel Interference	158mm
Overall Height	109mm
Swivel Radius	79mm
Hardness Of Tread	75±5° Shore D
Load Capacity (Dynamic)	160kgs
Load Capacity (Static)	240kgs
Temperature	-20°C to +80°C
Fork Type	Swivel Caster
Stainless	Y
Electrical Conductivity	N/A
Anti-Static	N/A
Weight	0.50kgs
Standard	ISO22883

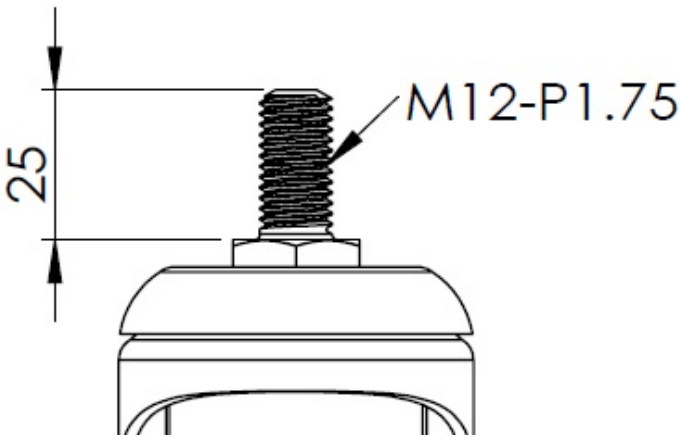
Advantages at a glance

Rolling Resistance	● ● ● ● ●
Operating Noise	● ● ○ ○ ○
Floor Surface Preservation	● ● ○ ○ ○

Dimensions



Mounting



* For any deviation between metric and imperial spec, please refer to the metric spec.