

1116-SS-MI Medium Duty Institutional Stainless Steel Caster Series



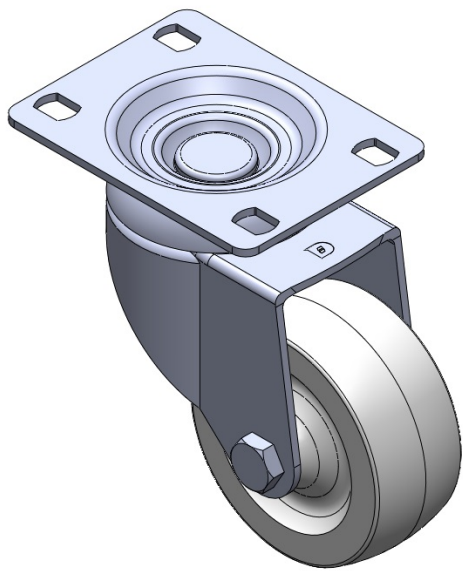
Nylon Wheel Diameter × Wheel Width 75 x 32mm

EAN  
TW-4111603002040

Swivel Casters, Riveted and Stamping Top Plate—high-grade perforated design. Surface vibration protection, Mounting Type - Top Plate. Reinforced Polypropylene Wheel Center and rim (low-temperature resistant). White, Plain Bearings.

Wheel surface: Thermoplastic  
Wheel hub: Thermoplastic

Drawings are for reference only and may differ from the product



Picture may differ from original product

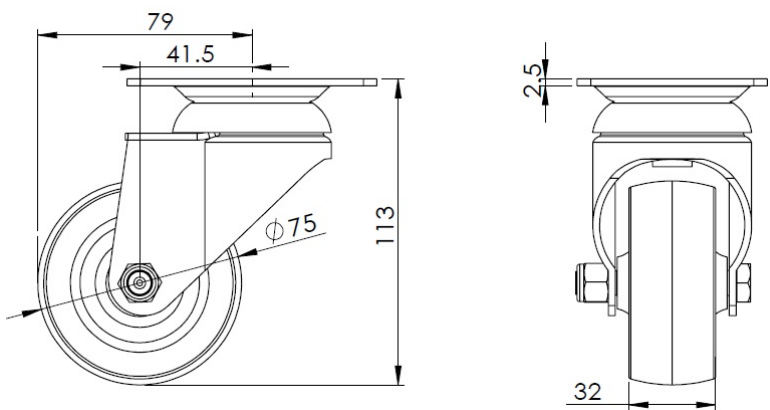
Technical Data

|  |                          |
|--|--------------------------|
| <input checked="" type="radio"/> Metric <input type="radio"/> Imperial |                          |
| Wheel Diameter   | 75mm                     |
| Wheel Width  | 32mm                     |
| Wheel Bearing  | Wheel With Plain Bearing |
| Plate Size   | 92 x 70mm                |
| Bolt Hole Spacing  | 75 x 45mm                |
| Plate Hole   | 12 x 9mm                 |
| Offset   | 41.5mm                   |
| Swivel Interference  | 158mm                    |
| Overall Height   | 113mm                    |
| Swivel Radius  | 79mm                     |
| Hardness Of Tread  | 75±5° Shore D            |
| Load Capacity (Dynamic)  | 100kgs                   |
| Load Capacity (Static)   | 150kgs                   |
| Temperature  | -20°C to +80°C           |
| Fork Type  | Swivel Caster            |
| Stainless  | Y                        |
| Electrical Conductivity  | N/A                      |
| Anti-Static  | N/A                      |
| Weight   | 0.60kgs                  |
| Standard   | ISO22883                 |

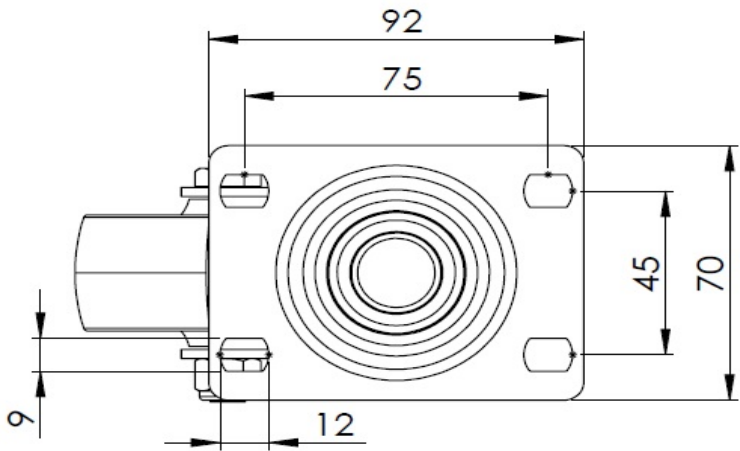
Advantages at a glance

|                            |           |
|----------------------------|-----------|
| Rolling Resistance         | ● ● ● ● ● |
| Operating Noise            | ● ● ○ ○ ○ |
| Floor Surface Preservation | ● ● ○ ○ ○ |

Dimensions



Mounting



\* For any deviation between metric and imperial spec, please refer to the metric spec.