

1116-SS-MI Medium Duty Institutional Stainless Steel Caster Series



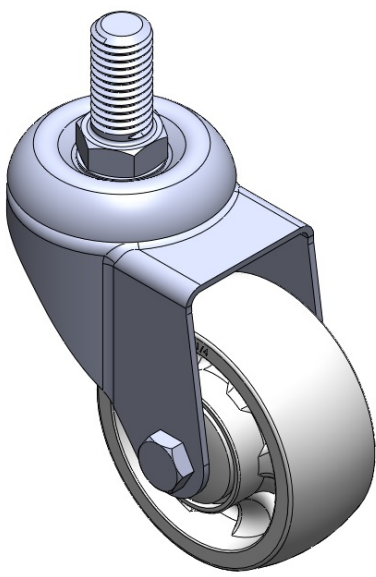
W Nylon wheel (white) Wheel diameter × wheel width 75 x 31 mm

EAN  
TW-4111603002042

Portable Casters, Threaded Stem Stamping Fork—5/8"-11 teeth; surface vibration resistant, Mounting Type - Top Plate; thermoplastic Wheel Center and rim; white; Bearing—Ball Bearings.

Wheel surface: Thermoplastic  
Wheel hub: Thermoplastic

Drawings are for reference only and may differ from the product



Picture may differ from original product

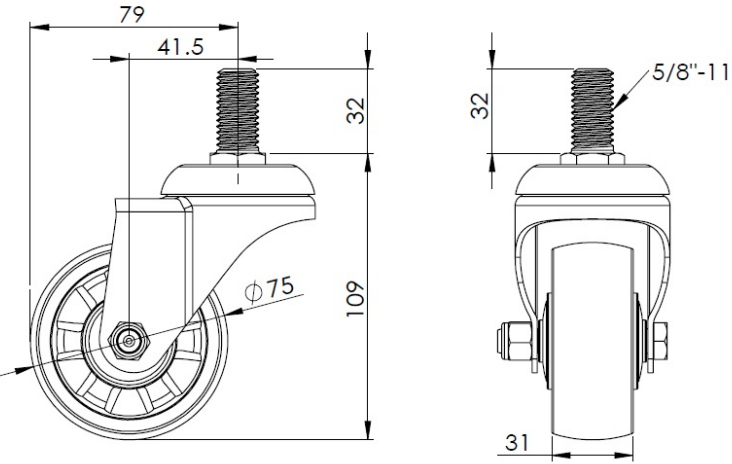
Technical Data

<input checked="" type="radio"/> Metric <input type="radio"/> Imperial	
Wheel Diameter	75mm
Wheel Width	31mm
Wheel Bearing	Wheels With Ball Bearings
Threaded Stem	5/8 " -11牙
Threaded Length	32mm
Offset	41.5mm
Swivel Interference	158mm
Overall Height	109mm
Swivel Radius	79mm
Hardness Of Tread	75±5° Shore D
Load Capacity (Dynamic)	125kgs
Load Capacity (Static)	187.5kgs
Temperature	-20°C to +80°C
Fork Type	Swivel Caster
Stainless	Y
Electrical Conductivity	N/A
Anti-Static	N/A
Weight	0.50kgs
Standard	ISO22883

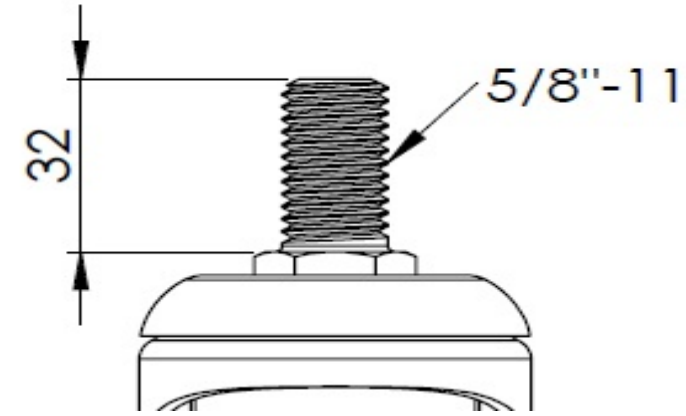
Advantages at a glance

Rolling Resistance	● ● ● ● ●
Operating Noise	● ● ○ ○ ○
Floor Surface Preservation	● ● ○ ○ ○

Dimensions



Mounting



\* For any deviation between metric and imperial spec, please refer to the metric spec.