

1116-SS-MI Medium Duty Institutional Stainless Steel Caster Series



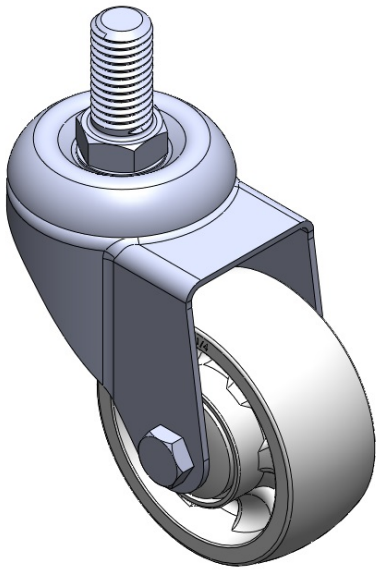
W Nylon wheel (white) Wheel diameter × wheel width 75 x 31 mm

EAN
TW-4111603002042

Portable Casters, Threaded Stem Stamping Fork—5/8"-11 teeth; surface vibration resistant, Mounting Type - Top Plate; thermoplastic Wheel Center and rim; white; Bearing—Ball Bearings.

Wheel surface: Thermoplastic
Wheel hub: Thermoplastic

Drawings are for reference only and may differ from the product



Picture may differ from original product

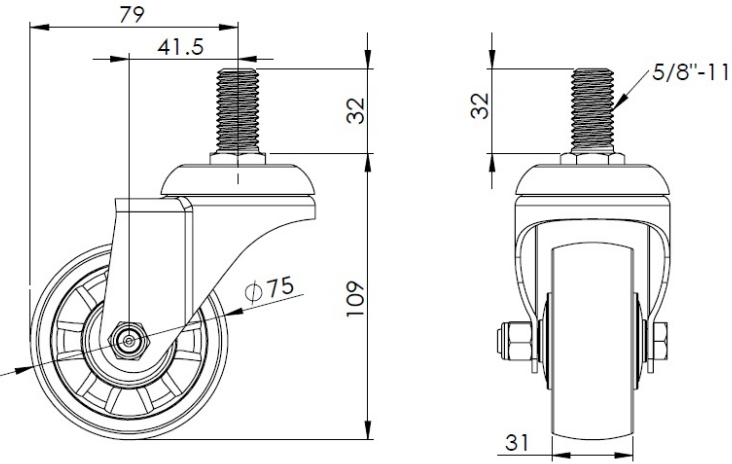
Technical Data

<input checked="" type="radio"/> Imperial <input type="radio"/> Metric	
Wheel Diameter	3 "
Wheel Width	1-1/4 "
Wheel Bearing	Wheels With Ball Bearings
Threaded Stem	5/8 " -11牙
Threaded Length	1-5/16 "
Offset	1-11/16 "
Swivel Interference	6-5/16 "
Overall Height	4-3/8 "
Swivel Radius	3-1/8 "
Hardness Of Tread	75±5° Shore D
Load Capacity (Dynamic)	276lbs
Load Capacity (Static)	413lbs
Temperature	-4°F to +176°F
Fork Type	Swivel Caster
Stainless	Y
Electrical Conductivity	N/A
Anti-Static	N/A
Weight	1.1lbs
Standard	ISO22883

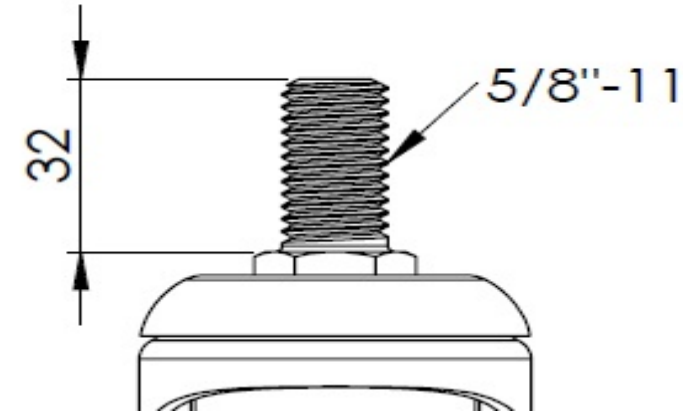
Advantages at a glance

Rolling Resistance	● ● ● ● ●
Operating Noise	● ● ○ ○ ○
Floor Surface Preservation	● ● ○ ○ ○

Dimensions



Mounting



* For any deviation between metric and imperial spec, please refer to the metric spec.