

1116-SS-MI Medium Duty Institutional Stainless Steel Caster Series



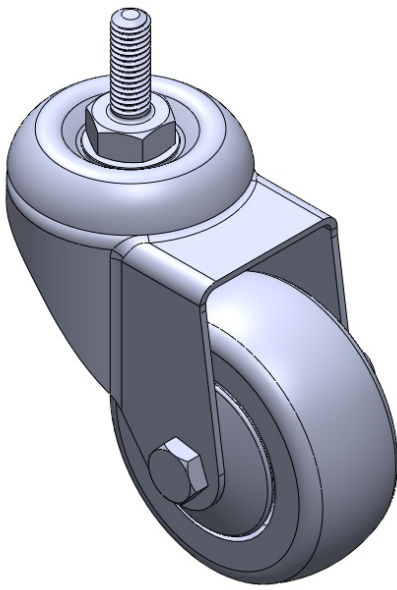
Resolute Wheel Diameter × Wheel Width 75 x 31mm

EAN
TW-4111603002047

Portable Casters, Threaded Stem Stamping Fork—3/8"-16 teeth Surface vibration resistant, Mounting Type - Top Plate device High-Quality Impact-Resistant Polypropylene Wheel Center, High-Quality Reinforced Polypropylene Rubber (TPR) Wheel Tread Gray, Bearing—Ball Bearings.

Wheel tread: Thermoplastic rubber elastomer (TPR)
Wheel Center: Made of high-quality impact-resistant polypropylene

Drawings are for reference only and may differ from the product



Picture may differ from original product

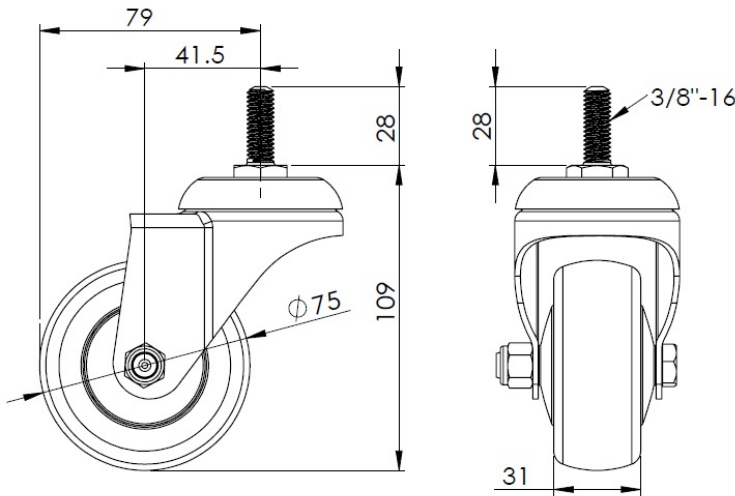
Technical Data

<input checked="" type="radio"/> Imperial <input type="radio"/> Metric	
Wheel Diameter	3 "
Wheel Width	1-1/4 "
Wheel Bearing	Wheels With Ball Bearings
Threaded Stem	3/8 " -16牙
Threaded Length	1-1/8 "
Offset	1-11/16 "
Swivel Interference	6-5/16 "
Overall Height	4-3/8 "
Swivel Radius	3-1/8 "
Hardness Of Tread	72±5° Shore A
Load Capacity (Dynamic)	198lbs
Load Capacity (Static)	298lbs
Temperature	-4°F to +140°F
Fork Type	Swivel Caster
Stainless	Y
Electrical Conductivity	N/A
Anti-Static	N/A
Weight	1.1lbs
Standard	ISO22883

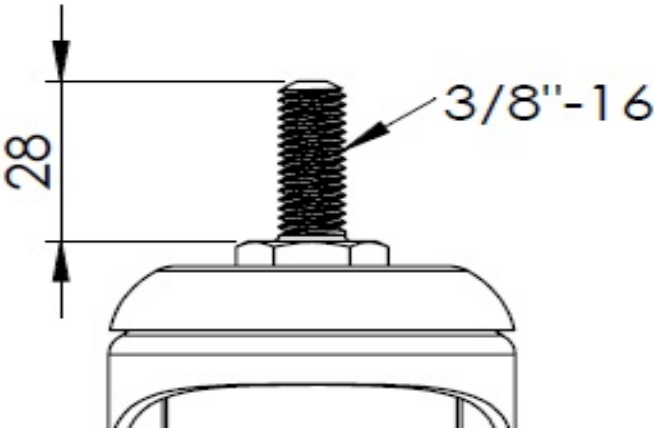
Advantages at a glance

Rolling Resistance	● ● ● ● ●
Operating Noise	● ● ● ● ●
Floor Surface Preservation	● ● ● ● ●

Dimensions



Mounting



* For any deviation between metric and imperial spec, please refer to the metric spec.