

1116-SS-LI Light Duty Stainless Steel Caster Series

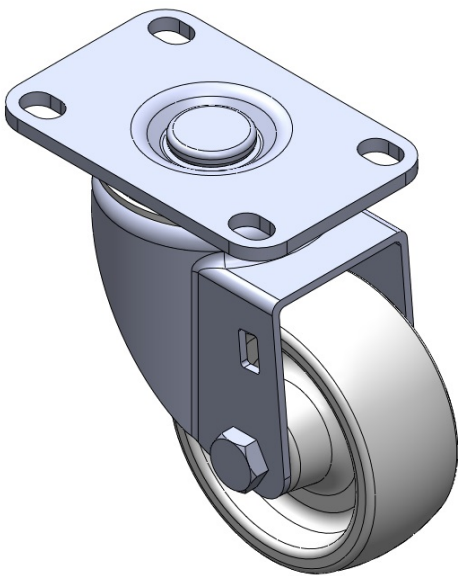
Nylon Wheel Diameter × Wheel Width 75 x 31mm

EAN
TW-4111603002050

Swivel Casters, Riveted and Stamping Fork. Surface vibration, Mounting Type - Top Plate device. Reinforced Polypropylene and Wheel Tread. White, Plain Bearings.

Wheel surface: Thermoplastic
Wheel hub: Thermoplastic

Drawings are for reference only and may differ from the product



Picture may differ from original product

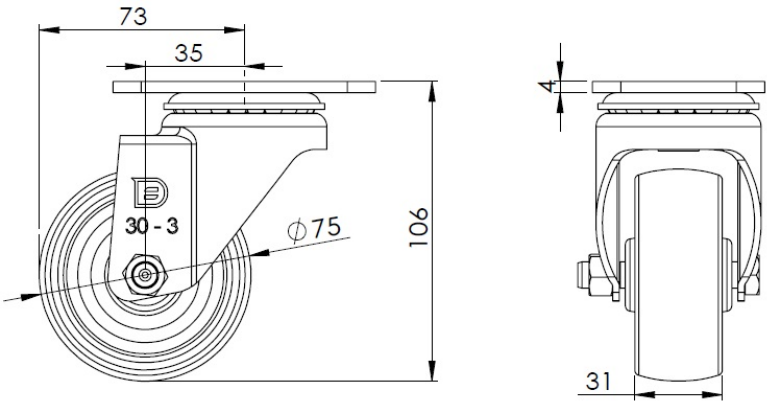
Technical Data

<input checked="" type="radio"/> Imperial <input type="radio"/> Metric	
Wheel Diameter	3 "
Wheel Width	1-1/4 "
Wheel Bearing	Wheel With Plain Bearing
Plate Size	3-11/16 " x 2-7/16 "
Bolt Hole Spacing	2-7/8"x1-3/4"
Plate Hole	1/2 " x 23/64 "
Offset	1-3/8 "
Swivel Interference	5-13/16 "
Overall Height	4-1/4 "
Swivel Radius	2-15/16 "
Hardness Of Tread	75±5° Shore D
Load Capacity (Dynamic)	220lbs
Load Capacity (Static)	331lbs
Temperature	-4°F to +176°F
Fork Type	Swivel Caster
Stainless	Y
Electrical Conductivity	N/A
Anti-Static	N/A
Weight	1.3lbs
Standard	ISO22883

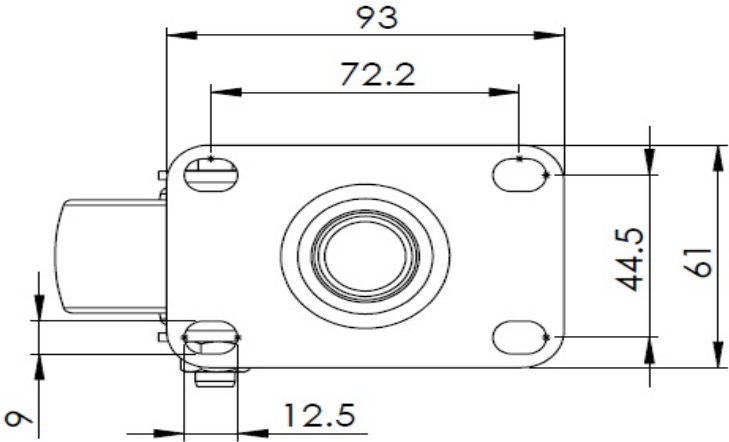
Advantages at a glance

Rolling Resistance	● ● ● ● ●
Operating Noise	● ● ○ ○ ○
Floor Surface Preservation	● ● ○ ○ ○

Dimensions



Mounting



* For any deviation between metric and imperial spec, please refer to the metric spec.