

1116-SS-MI Medium Duty Institutional Stainless Steel Caster Series



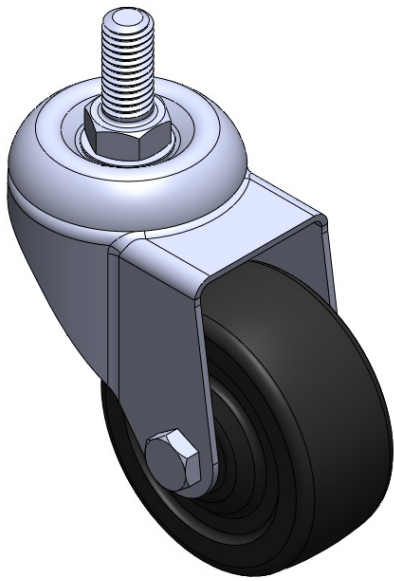
Rubber Wheel Diameter × Wheel Width 75 x 31mm

EAN  
TW-4111603002068

Swivel Casters, Threaded Stem Stamping Fork—1/2"-12 UNC; surface vibration resistant, Mounting Type - Top Plate; High-Quality Resilient Rubber Wheel Center; black finish; Plain Bearings.

Wheel surface: High-quality elastic rubber  
Wheel Center: High-quality elastic rubber

Drawings are for reference only and may differ from the product



Picture may differ from original product

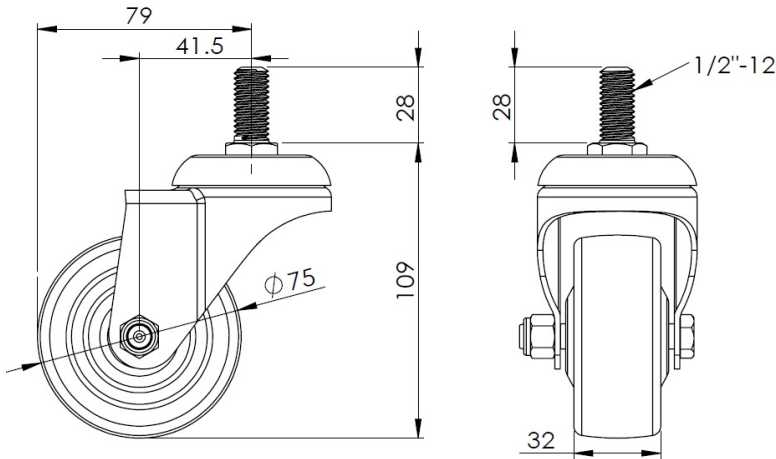
Technical Data

|                                                                        |                          |
|------------------------------------------------------------------------|--------------------------|
| <input checked="" type="radio"/> Metric <input type="radio"/> Imperial |                          |
| Wheel Diameter                                                         | 75mm                     |
| Wheel Width                                                            | 31mm                     |
| Wheel Bearing                                                          | Wheel With Plain Bearing |
| Threaded Stem                                                          | 1/2 " -12牙               |
| Threaded Length                                                        | 28mm                     |
| Offset                                                                 | 41.5mm                   |
| Swivel Interference                                                    | 158mm                    |
| Overall Height                                                         | 109mm                    |
| Swivel Radius                                                          | 79mm                     |
| Hardness Of Tread                                                      | 80±5° Shore A            |
| Load Capacity (Dynamic)                                                | 70kgs                    |
| Load Capacity (Static)                                                 | 105kgs                   |
| Temperature                                                            | -20°C to +120°C          |
| Fork Type                                                              | Swivel Caster            |
| Stainless                                                              | Y                        |
| Electrical Conductivity                                                | N/A                      |
| Anti-Static                                                            | N/A                      |
| Weight                                                                 | 0.50kgs                  |
| Standard                                                               | ISO22883                 |

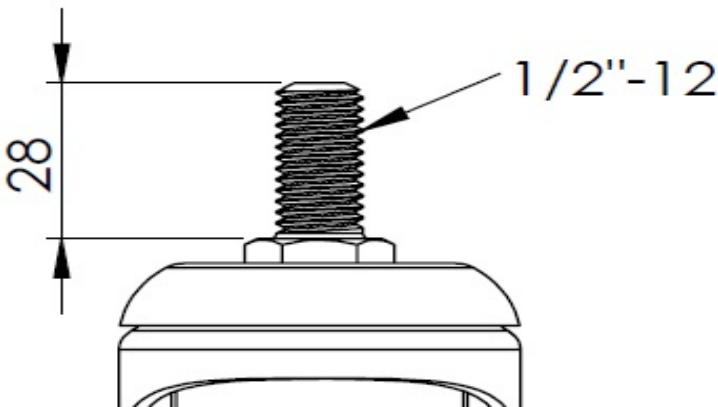
Advantages at a glance

|                            |           |
|----------------------------|-----------|
| Rolling Resistance         | ● ● ● ○ ○ |
| Operating Noise            | ● ● ● ● ○ |
| Floor Surface Preservation | ● ● ● ● ○ |

Dimensions



Mounting



\* For any deviation between metric and imperial spec, please refer to the metric spec.