

1116-SS-MI Medium Duty Institutional Stainless Steel Caster Series



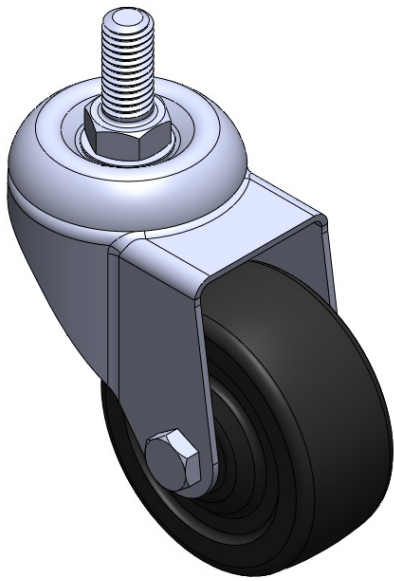
Rubber Wheel Diameter × Wheel Width 75 x 31mm

EAN  
TW-4111603002068

Swivel Casters, Threaded Stem Stamping Fork—1/2"-12 UNC; surface vibration resistant, Mounting Type - Top Plate; High-Quality Resilient Rubber Wheel Center; black finish; Plain Bearings.

Wheel surface: High-quality elastic rubber  
Wheel Center: High-quality elastic rubber

Drawings are for reference only and may differ from the product



Picture may differ from original product

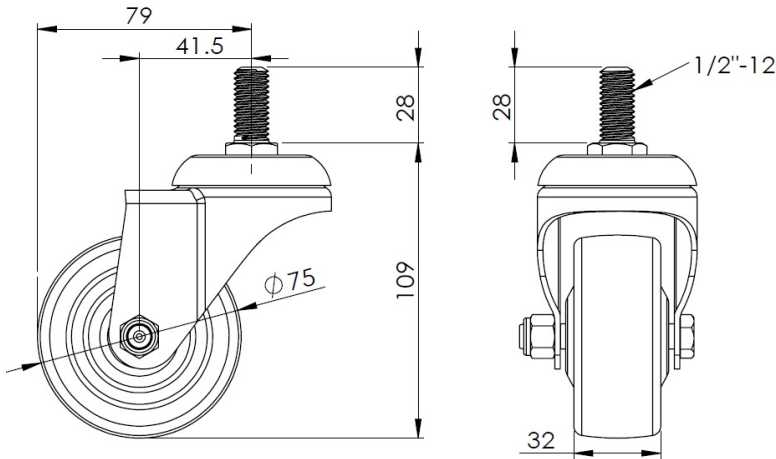
Technical Data

<input checked="" type="radio"/> Imperial <input type="radio"/> Metric	
Wheel Diameter	3 "
Wheel Width	1-1/4 "
Wheel Bearing	Wheel With Plain Bearing
Threaded Stem	1/2 " -12牙
Threaded Length	1-1/8 "
Offset	1-11/16 "
Swivel Interference	6-5/16 "
Overall Height	4-3/8 "
Swivel Radius	3-1/8 "
Hardness Of Tread	80±5° Shore A
Load Capacity (Dynamic)	154lbs
Load Capacity (Static)	231lbs
Temperature	-4°F to +248°F
Fork Type	Swivel Caster
Stainless	Y
Electrical Conductivity	N/A
Anti-Static	N/A
Weight	1.1lbs
Standard	ISO22883

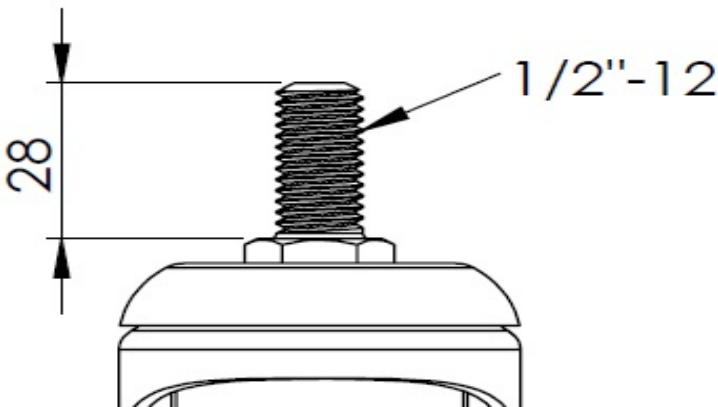
Advantages at a glance

Rolling Resistance	● ● ● ○ ○
Operating Noise	● ● ● ● ○
Floor Surface Preservation	● ● ● ● ○

Dimensions



Mounting



\* For any deviation between metric and imperial spec, please refer to the metric spec.