

1116-SS-LI Light Duty Stainless Steel Caster Series

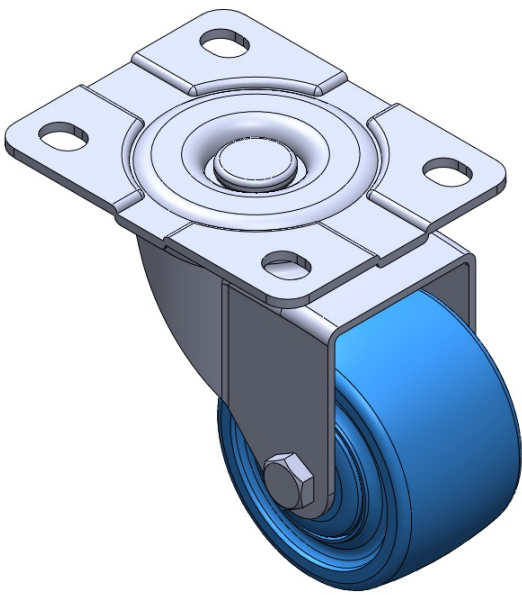
King Kong Wheel Diameter × Wheel Width 75 x 45mm

EAN
TW-4111603002074

Swivel Casters, Riveted and Stamping Top Plate. Surface vibration, Mounting Type - Top Plate device. Reinforced Polypropylene and Wheel Tread. Blue, Bearing—Ball Bearings.

Wheel surface: thermoplastic
Wheel Center: thermoplastic

Drawings are for reference only and may differ from the product



Picture may differ from original product

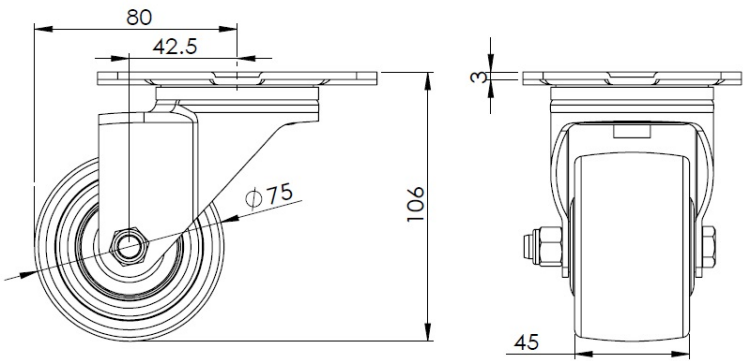
Technical Data

<div><div><div></div></div><div><div>Metric</div><div>Imperial</div></div></div>	
Wheel Diameter	75mm
Wheel Width	45mm
Wheel Bearing	Wheels With Ball Bearings
Plate Size	110 x 86mm
Bolt Hole Spacing	83 x 60mm
Plate Hole	14 x 11mm
Offset	42.5mm
Swivel Interference	160mm
Overall Height	106mm
Swivel Radius	80mm
Hardness Of Tread	80±5° Shore D
Load Capacity (Dynamic)	400kgs
Load Capacity (Static)	600kgs
Temperature	-25°C to +120°C
Fork Type	Swivel Caster
Stainless	Y
Electrical Conductivity	N/A
Anti-Static	N/A
Weight	0.65kgs
Standard	ISO22883

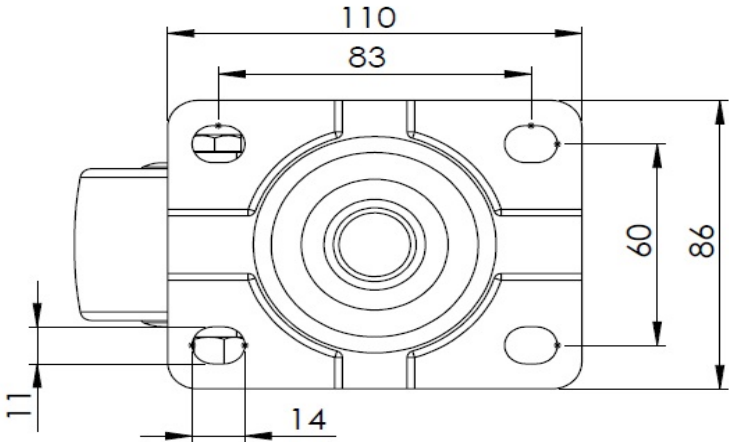
Advantages at a glance

Rolling Resistance	● ● ● ● ●
Operating Noise	● ● ○ ○ ○
Floor Surface Preservation	● ● ○ ○ ○

Dimensions



Mounting



* For any deviation between metric and imperial spec, please refer to the metric spec.