

1116-SS-LI Light Duty Stainless Steel Caster Series

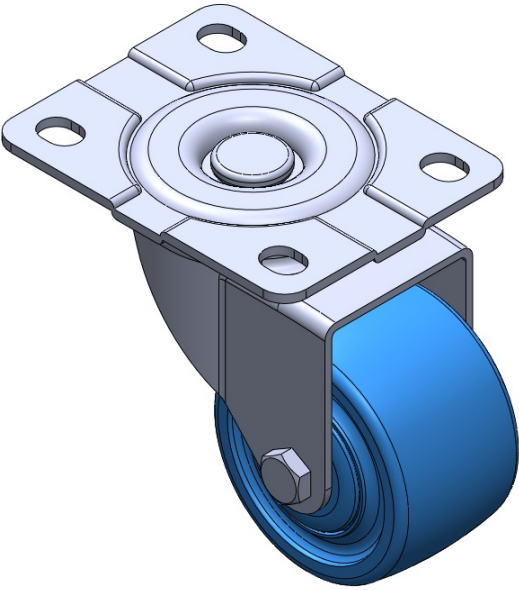
King Kong Wheel Diameter × Wheel Width 75 x 45mm

EAN
TW-4111603002074

Swivel Casters, Riveted and Stamping Top Plate. Surface vibration, Mounting Type - Top Plate device. Reinforced Polypropylene and Wheel Tread. Blue, Bearing—Ball Bearings.

Wheel surface: thermoplastic
Wheel Center: thermoplastic

Drawings are for reference only and may differ from the product



Picture may differ from original product

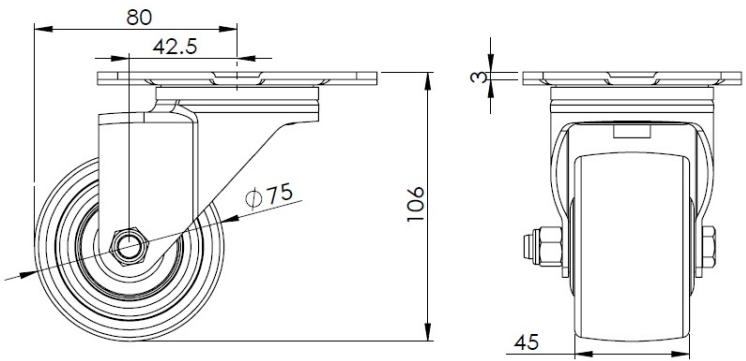
Technical Data

| | |
|---|---------------------------|
| <div><div><div>●</div>Imperial</div><div><div>○</div>Metric</div></div> | |
| Wheel Diameter | 3 " |
| Wheel Width | 1-13/16 " |
| Wheel Bearing | Wheels With Ball Bearings |
| Plate Size | 4-3/8 " x 3-7/16 " |
| Bolt Hole Spacing | 2-1/4 " x 2-3/8 " |
| Plate Hole | 9/16 " x 3/8 " |
| Offset | 1-11/16 " |
| Swivel Interference | 6-3/8 " |
| Overall Height | 4-1/4 " |
| Swivel Radius | 3-3/16 " |
| Hardness Of Tread | 80±5° Shore D |
| Load Capacity (Dynamic) | 882lbs |
| Load Capacity (Static) | 1323lbs |
| Temperature | -13°F to + 248°F |
| Fork Type | Swivel Caster |
| Stainless | Y |
| Electrical Conductivity | N/A |
| Anti-Static | N/A |
| Weight | 1.4lbs |
| Standard | ISO22883 |

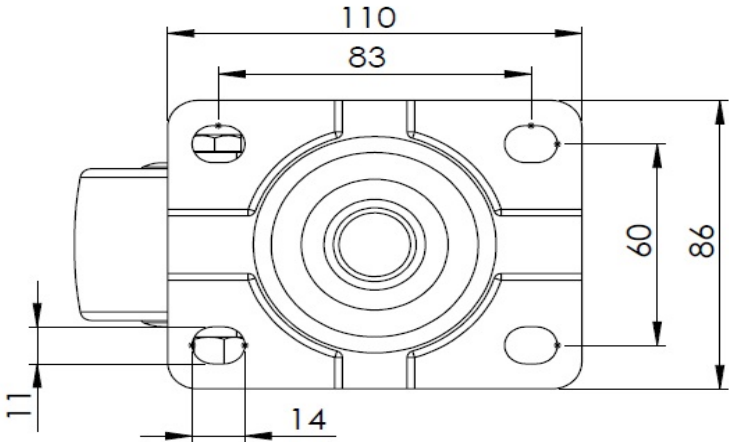
Advantages at a glance

| | |
|----------------------------|-----------|
| Rolling Resistance | ● ● ● ● ● |
| Operating Noise | ● ● ○ ○ ○ |
| Floor Surface Preservation | ● ● ○ ○ ○ |

Dimensions



Mounting



* For any deviation between metric and imperial spec, please refer to the metric spec.