

1116-SS-MI Medium Duty Institutional Stainless Steel Caster Series



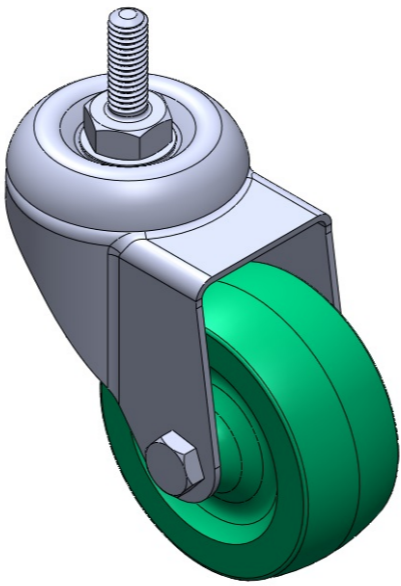
Nylon wheel (green) Wheel diameter × wheel width 75 x 32mm

EAN
TW-4111603002075

Swivel Casters, Threaded Stem Stamping Fork—3/8"-16 thread; surface vibration, Mounting Type - Top Plate; thermoplastic Wheel Center and rim; green; Plain Bearings.

Wheel surface: Thermoplastic
Wheel Center: Thermoplastic

Drawings are for reference only and may differ from the product



Picture may differ from original product

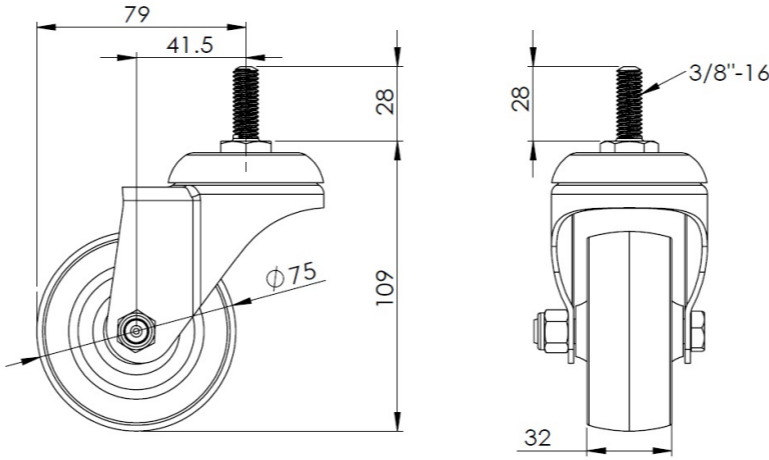
Technical Data

| | |
|--|--------------------------|
| <input checked="" type="radio"/> Metric <input type="radio"/> Imperial | |
| Wheel Diameter | 75mm |
| Wheel Width | 32mm |
| Wheel Bearing | Wheel With Plain Bearing |
| Threaded Stem | 3/8 " -16牙 |
| Threaded Length | 28mm |
| Offset | 41.5mm |
| Swivel Interference | 158mm |
| Overall Height | 109mm |
| Swivel Radius | 79mm |
| Hardness Of Tread | 75±5° Shore D |
| Load Capacity (Dynamic) | 100kgs |
| Load Capacity (Static) | 150kgs |
| Temperature | -20°C to +80°C |
| Fork Type | Swivel Caster |
| Stainless | Y |
| Electrical Conductivity | N/A |
| Anti-Static | N/A |
| Weight | 0.50kgs |
| Standard | ISO22883 |

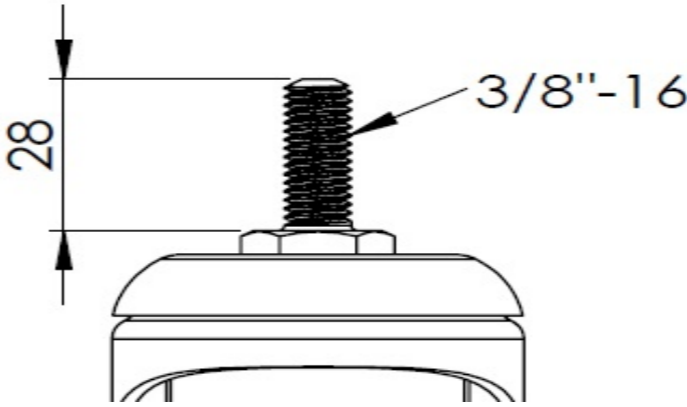
Advantages at a glance

| | |
|----------------------------|-----------|
| Rolling Resistance | ● ● ● ● ● |
| Operating Noise | ● ● ○ ○ ○ |
| Floor Surface Preservation | ● ● ○ ○ ○ |

Dimensions



Mounting



* For any deviation between metric and imperial spec, please refer to the metric spec.