

1116-SS-MI Medium Duty Institutional Stainless Steel Caster Series



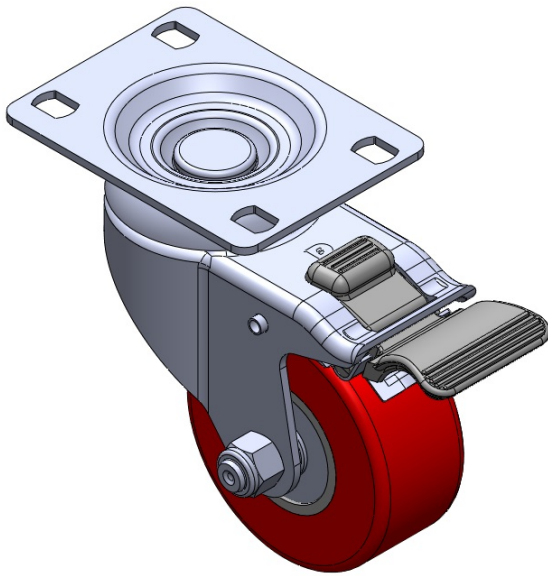
PU Wheel Diameter × Wheel Width 75 x 32mm

EAN
TW-4111603004005

Equipped with double-brake locking Casters. Riveted and Stamping Top Plate legs with high-grade perforations. Surface vibration, Mounting Type - Top Plate. Cast Iron Wheel Centers with High Quality Polyurethane Wheel Treads. Red Bearing—Ball Bearings.

Wheel surface: High-quality polyurethane
Wheel Center: Iron core/Cast iron core

Drawings are for reference only and may differ from the product



Picture may differ from original product

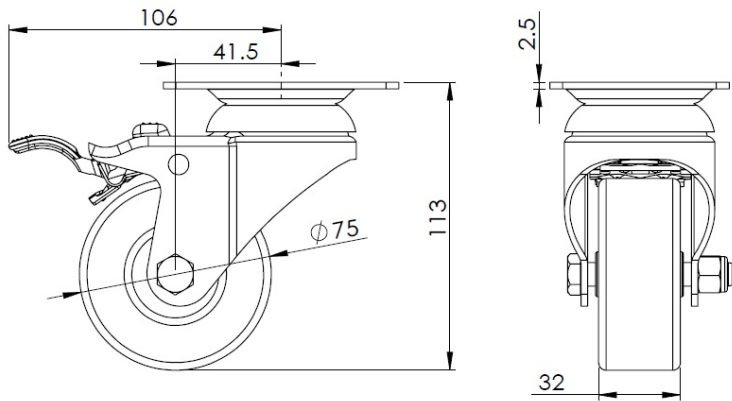
Technical Data

<input checked="" type="radio"/> Metric <input type="radio"/> Imperial	
Wheel Diameter	75mm
Wheel Width	32mm
Wheel Bearing	Wheel With Annual Ball Bearing
Plate Size	92 x 70mm
Bolt Hole Spacing	75 x 45mm
Plate Hole	12 x 9mm
Offset	41.5mm
Swivel Interference	212mm
Overall Height	113mm
Swivel Radius	106mm
Hardness Of Tread	92±5° Shore A
Load Capacity (Dynamic)	125kgs
Load Capacity (Static)	187.5kgs
Temperature	-20°C to +70°C
Fork Type	Swivel Caster With Total Brake
Stainless	Y
Electrical Conductivity	N/A
Anti-Static	N/A
Weight	0.90kgs
Standard	ISO22883

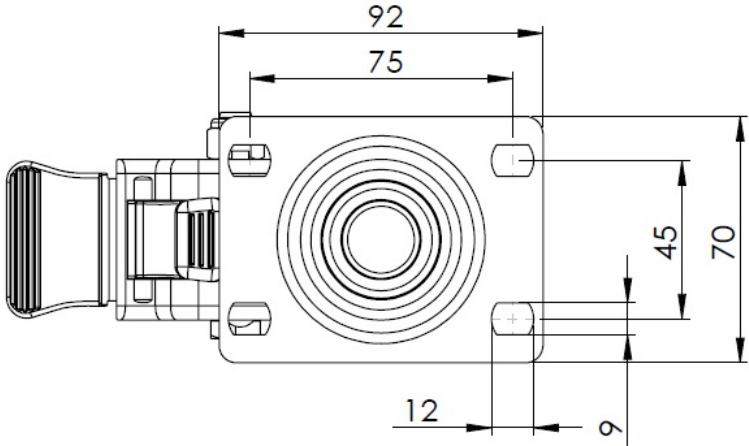
Advantages at a glance

Rolling Resistance	● ● ● ○ ○
Operating Noise	● ● ● ● ○
Floor Surface Preservation	● ● ● ● ○

Dimensions



Mounting



* For any deviation between metric and imperial spec, please refer to the metric spec.