

1116-SS-MI Medium Duty Institutional Stainless Steel Caster Series



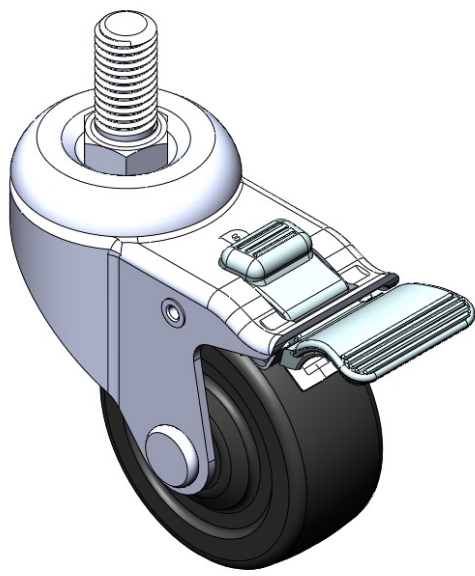
Rubber Wheel Diameter × Wheel Width 75 x 31mm

EAN  
TW-4111603004010

Equipped with double-brake With locking system Casters. Stamping feet with Riveted cores—5/8"-11 teeth. Surface vibration resistant, Mounting Type - Threaded Stem. High-Quality Resilient Rubber Wheel Center and rim. Black, Plain Bearings.

Wheel surface: High-quality elastic rubber  
Wheel Center: High-quality elastic rubber

Drawings are for reference only and may differ from the product



Picture may differ from original product

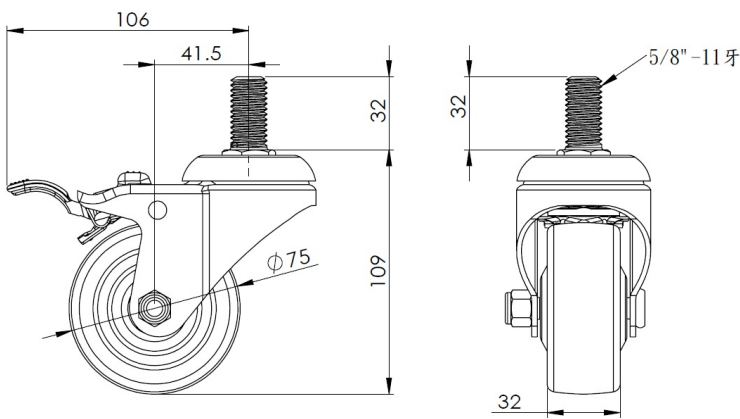
Technical Data

<input checked="" type="radio"/> Metric <input type="radio"/> Imperial	
Wheel Diameter	75mm
Wheel Width	31mm
Wheel Bearing	Wheel With Plain Bearing
Threaded Stem	5/8 " -11牙
Threaded Length	28mm
Offset	41.5mm
Swivel Interference	212mm
Overall Height	109mm
Swivel Radius	106mm
Hardness Of Tread	75±5° Shore D
Load Capacity (Dynamic)	70kgs
Load Capacity (Static)	105kgs
Temperature	-20°C to +80°C
Fork Type	Swivel Caster With Total Brake
Stainless	Y
Electrical Conductivity	N/A
Anti-Static	N/A
Weight	0.65kgs
Standard	ISO22883

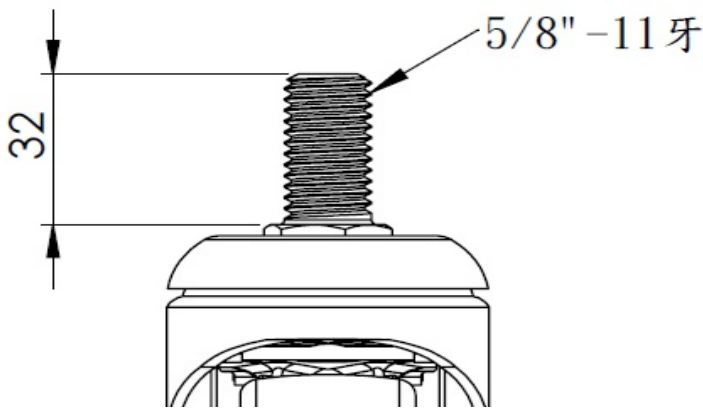
Advantages at a glance

Rolling Resistance	● ● ● ● ●
Operating Noise	● ● ○ ○ ○
Floor Surface Preservation	● ● ○ ○ ○

Dimensions



Mounting



\* For any deviation between metric and imperial spec, please refer to the metric spec.