

1116-SS-MI Medium Duty Institutional Stainless Steel Caster Series



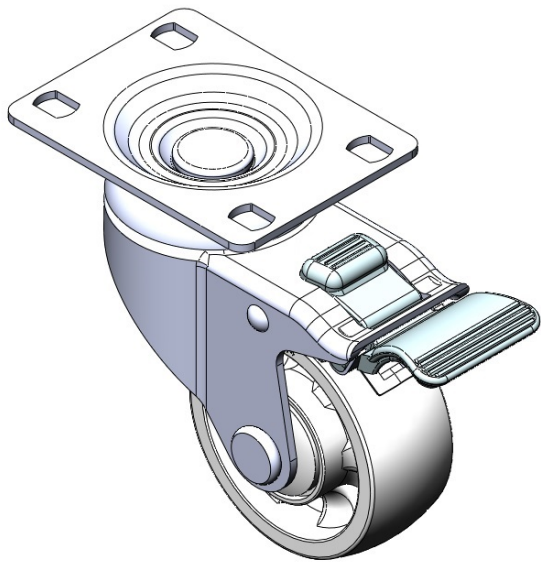
WMRC Wheel Diameter × Wheel Width 75 x 31mm

EAN  
TW-4111603004039

Equipped with double-brake locking Casters. Riveted and Stamping Top Plate legs with high-grade perforations. Surface vibration damping, Mounting Type - Top Plate. Reinforced thermoplastic Wheel Center and rim. Gray Bearing—Ball Bearings.

Wheel surface: thermoplastic  
Wheel Center: thermoplastic

Drawings are for reference only and may differ from the product



Picture may differ from original product

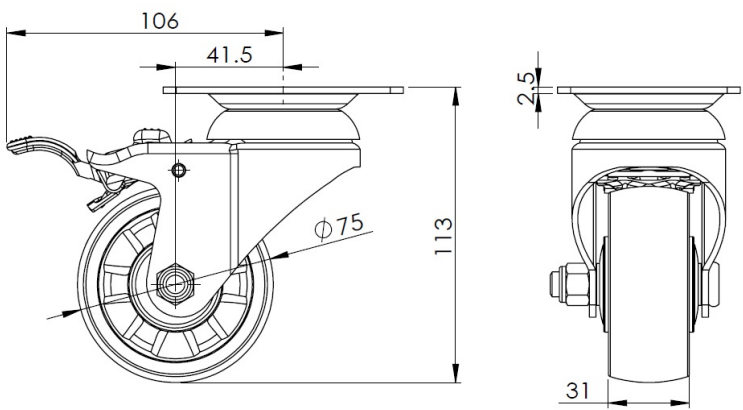
Technical Data

|  |                                |
|--|--------------------------------|
| <input checked="" type="radio"/> Metric <input type="radio"/> Imperial |                                |
| Wheel Diameter   | 75mm                           |
| Wheel Width  | 31mm                           |
| Wheel Bearing  | Wheels With Ball Bearings      |
| Plate Size   | 92 x 70mm                      |
| Bolt Hole Spacing  | 75 x 45mm                      |
| Plate Hole   | 12 x 9mm                       |
| Offset   | 41.5mm                         |
| Swivel Interference  | 212mm                          |
| Overall Height   | 113mm                          |
| Swivel Radius  | 106mm                          |
| Hardness Of Tread  | 75±5° Shore D                  |
| Load Capacity (Dynamic)  | 125kgs                         |
| Load Capacity (Static)   | 187.5kgs                       |
| Temperature  | -20°C to +80°C                 |
| Fork Type  | Swivel Caster With Total Brake |
| Stainless  | Y                              |
| Electrical Conductivity  | N/A                            |
| Anti-Static  | N/A                            |
| Weight   | 0.75kgs                        |
| Standard   | ISO22883                       |

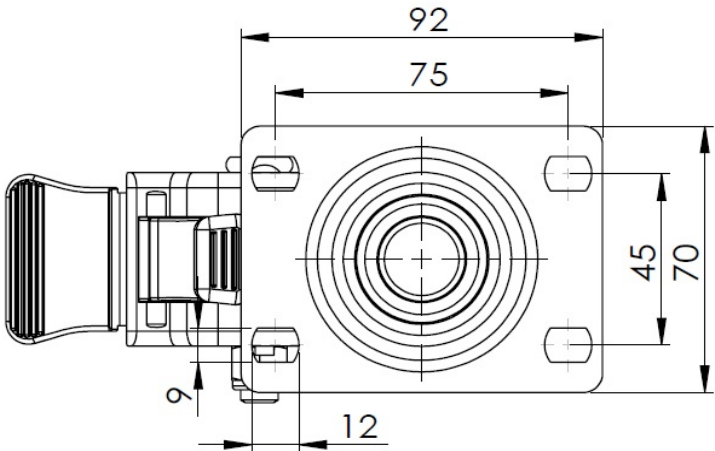
Advantages at a glance

|                            |           |
|----------------------------|-----------|
| Rolling Resistance         | ● ● ● ● ● |
| Operating Noise            | ● ● ○ ○ ○ |
| Floor Surface Preservation | ● ● ○ ○ ○ |

Dimensions



Mounting



\* For any deviation between metric and imperial spec, please refer to the metric spec.