

1116-SS-MI Medium Duty Institutional Stainless Steel Caster Series



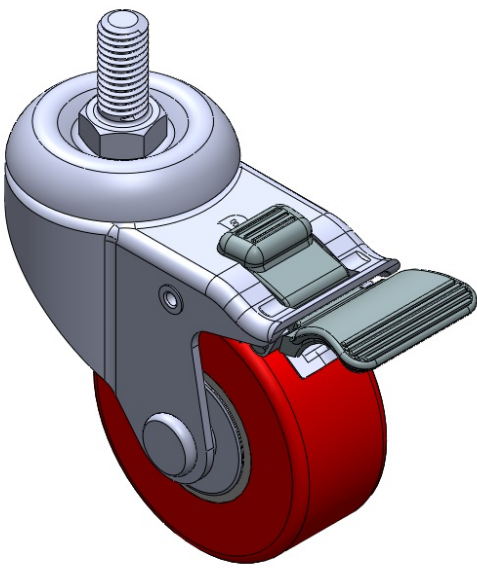
PU Wheel Diameter × Wheel Width 75 x 32mm

EAN
TW-4111603004040

Equipped with double-brake With locking system Casters. Stamping feet with Riveted center joints—1/2"-12 teeth. Surface vibration resistant, Mounting Type - Top Plate. Cast Iron Wheel Center, High Quality Polyurethane Wheel Tread. Red Bearing—Ball Bearings.

Wheel surface: High-quality polyurethane
Wheel Center: Iron core/Cast iron core

Drawings are for reference only and may differ from the product



Picture may differ from original product

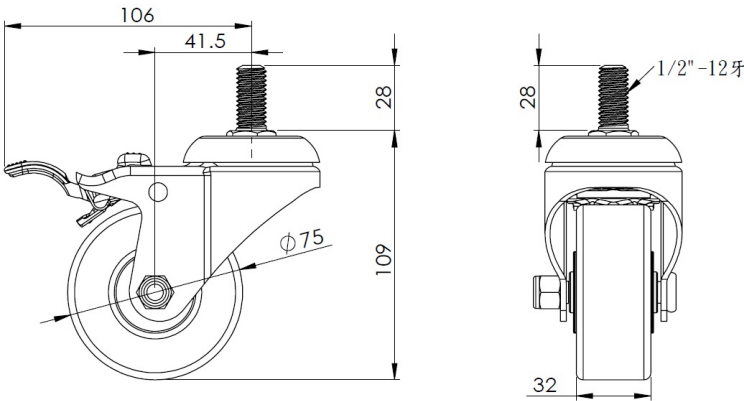
Technical Data

<input checked="" type="radio"/> Metric <input type="radio"/> Imperial	
Wheel Diameter	75mm
Wheel Width	32mm
Wheel Bearing	Wheels With Ball Bearings
Threaded Stem	1/2 " -12牙
Threaded Length	28mm
Offset	41.5mm
Swivel Interference	212mm
Overall Height	109mm
Swivel Radius	106mm
Hardness Of Tread	92±5° Shore A
Load Capacity (Dynamic)	125kgs
Load Capacity (Static)	187.5kgs
Temperature	-20°C to +70°C
Fork Type	Swivel Caster With Total Brake
Stainless	Y
Electrical Conductivity	N/A
Anti-Static	N/A
Weight	0.80kgs
Standard	ISO22883

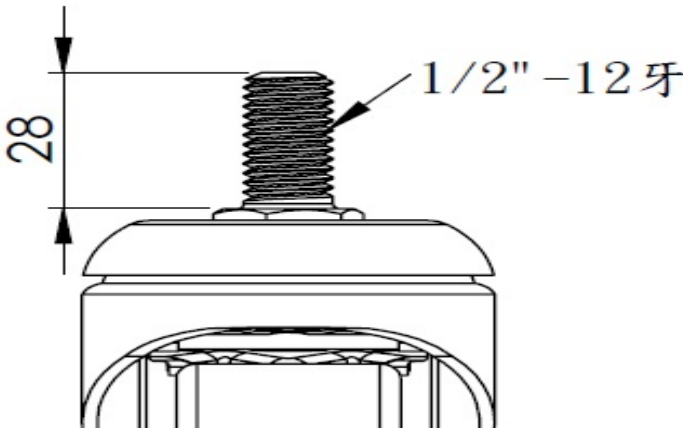
Advantages at a glance

Rolling Resistance	● ● ● ○ ○
Operating Noise	● ● ● ● ○
Floor Surface Preservation	● ● ● ● ○

Dimensions



Mounting



* For any deviation between metric and imperial spec, please refer to the metric spec.