

1116-SS-MI Medium Duty Institutional Stainless Steel Caster Series



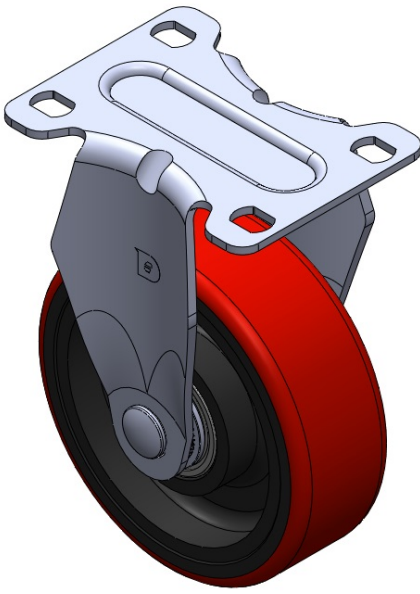
PU Wheel Diameter × Wheel Width 100 x 34mm

EAN
TW-4111604001033

Rigid Casters, Stamping Fabricated Caster Fork — high-grade perforated design
Surface vibration, Mounting Type - Top Plate device Cast Iron Wheel Center, High
Quality Polyurethane Wheel Tread Red, Bearing — Ball Bearings.

Wheel surface: High-quality polyurethane
Wheel Center: Iron core/Cast iron core

Drawings are for reference only and may differ from the product



Picture may differ from original product

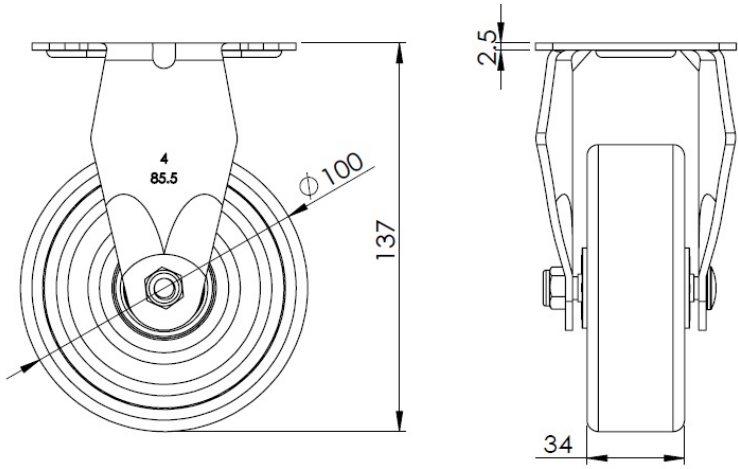
Technical Data

<input checked="" type="radio"/> Metric <input type="radio"/> Imperial	
Wheel Diameter	100mm
Wheel Width	34mm
Wheel Bearing	Wheels With Ball Bearings
Plate Size	92 x 70mm
Bolt Hole Spacing	75 x 45mm
Plate Hole	12 x 9mm
Overall Height	137mm
Hardness Of Tread	92±5° Shore A
Load Capacity (Dynamic)	135kgs
Load Capacity (Static)	202.5kgs
Temperature	-20°C to +70°C
Fork Type	Rigid Caster
Stainless	Y
Electrical Conductivity	N/A
Anti-Static	N/A
Weight	1.0kgs
Standard	ISO22883

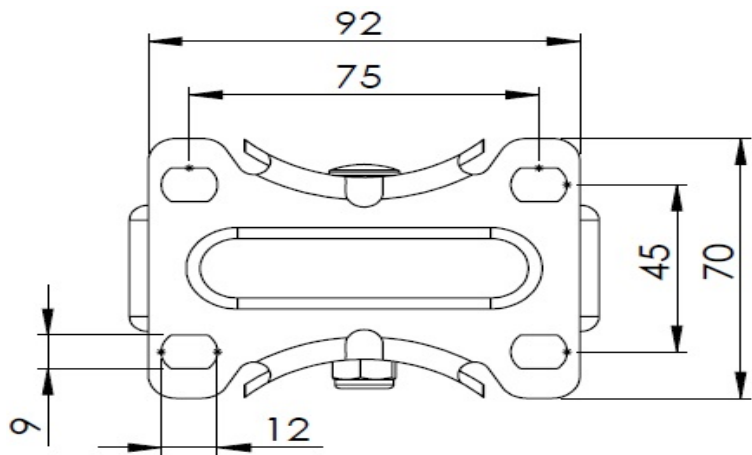
Advantages at a glance

Rolling Resistance	● ● ● ○ ○
Operating Noise	● ● ● ● ○
Floor Surface Preservation	● ● ● ● ○

Dimensions



Mounting



* For any deviation between metric and imperial spec, please refer to the metric spec.