

1116-SS-MI Medium Duty Institutional Stainless Steel Caster Series



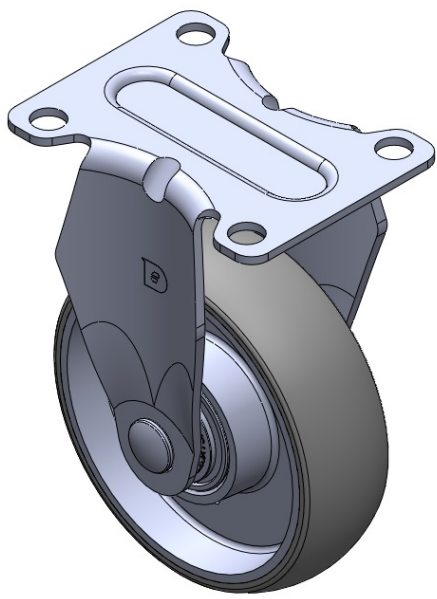
AQPU (grey) wheel Diameter × Wheel Width 100 x 31mm

EAN
TW-4111604001037

Rigid Casters, Stamping Fabricated Caster Fork — instrument aperture Surface vibration, Mounting Type - Top Plate device Aluminum wheel center, High Quality Polyurethane Wheel Tread Gray, Bearing — Ball Bearings.

Wheel surface: High-quality polyurethane
Wheel Center: Aluminum core

Drawings are for reference only and may differ from the product



Picture may differ from original product

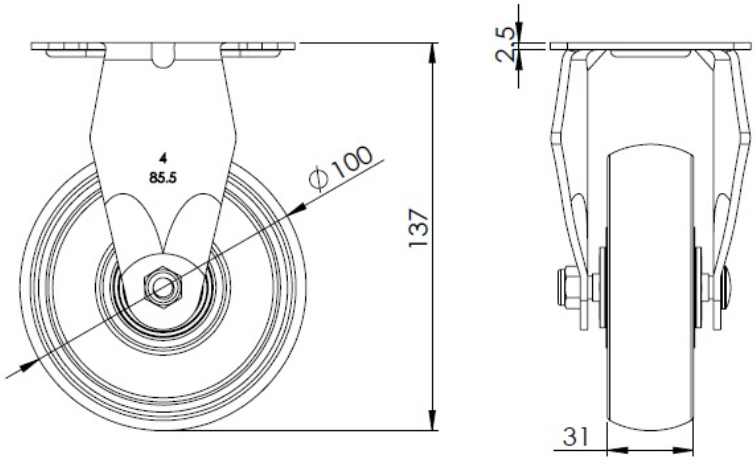
Technical Data

| | |
|--|---------------------------|
| <input checked="" type="radio"/> Imperial <input type="radio"/> Metric | |
| Wheel Diameter | 4 " |
| Wheel Width | 1-1/4 " |
| Wheel Bearing | Wheels With Ball Bearings |
| Plate Size | 3-5/8 " x 2-13/16 " |
| Bolt Hole Spacing | 2-7/8 " x 2-1/8 " |
| Plate Hole | 3/8 " |
| Overall Height | 5-1/2 " |
| Hardness Of Tread | 77±5° Shore A |
| Load Capacity (Dynamic) | 298lbs |
| Load Capacity (Static) | 446lbs |
| Temperature | -4°F to +158°F |
| Fork Type | Rigid Caster |
| Stainless | Y |
| Electrical Conductivity | N/A |
| Anti-Static | N/A |
| Weight | 1.1lbs |
| Standard | ISO22883 |

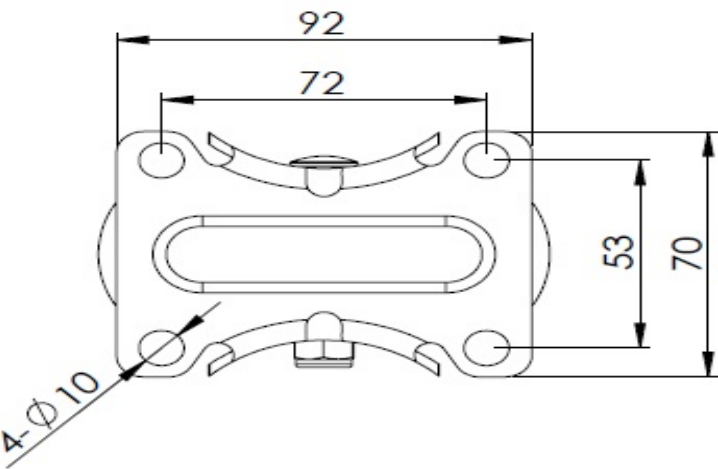
Advantages at a glance

| | |
|----------------------------|-----------|
| Rolling Resistance | ● ● ● ● ● |
| Operating Noise | ● ● ● ● ● |
| Floor Surface Preservation | ● ● ● ● ● |

Dimensions



Mounting



* For any deviation between metric and imperial spec, please refer to the metric spec.