

1116-SS-MI Medium Duty Institutional Stainless Steel Caster Series



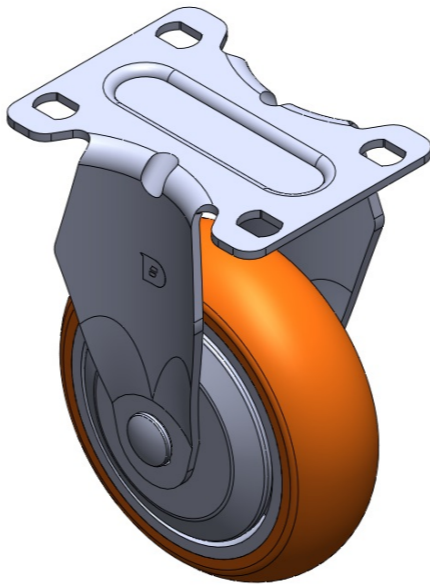
AQPU (brown) Wheel Diameter × Wheel Width 100 x 31mm

EAN  
TW-4111604001044

Rigid Casters, Stamping Fabricated Caster Fork — high-grade perforated design  
Surface vibration, Mounting Type - Top Plate Aluminum wheel center, High Quality  
Polyurethane Wheel Tread Brown color, Bearing — Ball Bearings.

Wheel surface: High-quality polyurethane  
Wheel Center: Aluminum core

Drawings are for reference only and may differ from the product



Picture may differ from original product

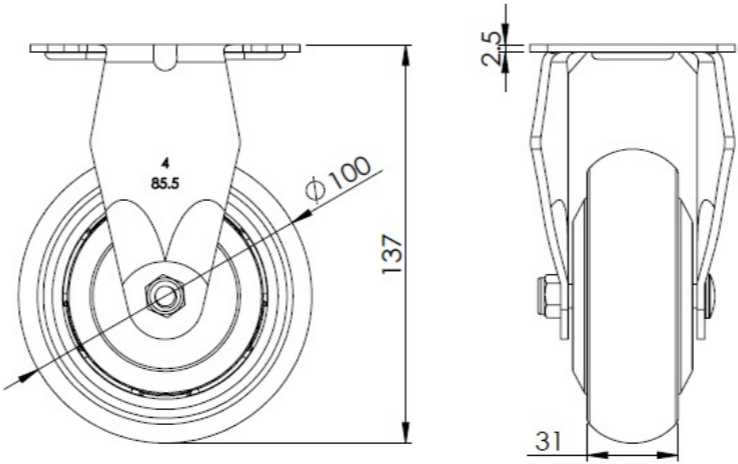
Technical Data

<input checked="" type="radio"/> Imperial <input type="radio"/> Metric	
Wheel Diameter	4 "
Wheel Width	1-1/4 "
Wheel Bearing	Wheels With Ball Bearings
Plate Size	3-5/8 " x 2-13/16 "
Bolt Hole Spacing	3 " x 1-13/16 "
Plate Hole	1/2 " x 23/64 "
Overall Height	5-1/2 "
Hardness Of Tread	92±5° Shore A
Load Capacity (Dynamic)	298lbs
Load Capacity (Static)	446lbs
Temperature	-4°F to +158°F
Fork Type	Rigid Caster
Stainless	Y
Electrical Conductivity	N/A
Anti-Static	N/A
Weight	1.1lbs
Standard	ISO22883

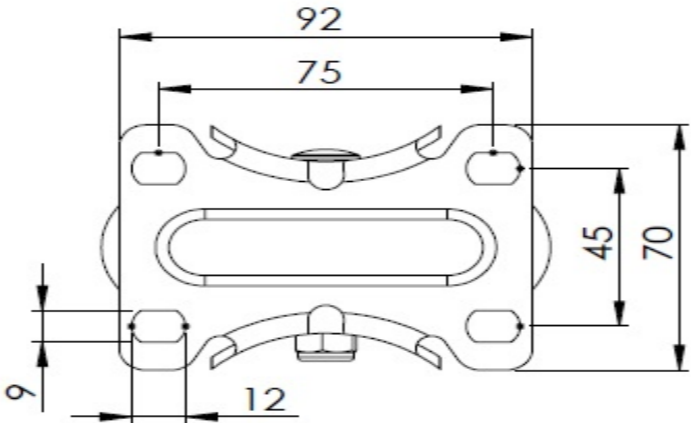
Advantages at a glance

Rolling Resistance	● ● ● ● ●
Operating Noise	● ● ● ● ●
Floor Surface Preservation	● ● ● ● ●

Dimensions



Mounting



\* For any deviation between metric and imperial spec, please refer to the metric spec.