

1116-SS-MJ Medium Duty Stainless Steel Caster Series



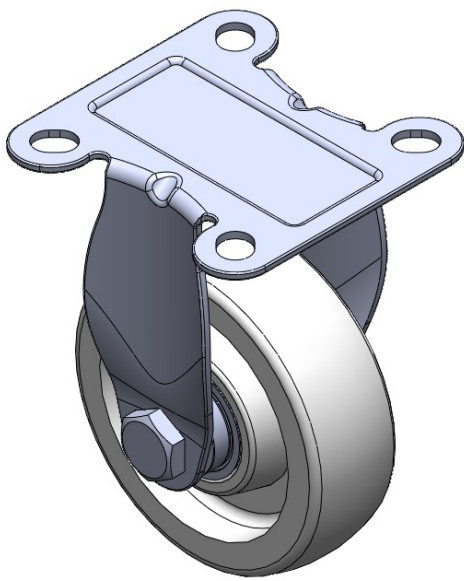
Nylon wheel (white) Wheel diameter × wheel width 100 x 32mm

EAN  
TW-4111604001051

Rigid Casters, Stamping Fabricated Caster Fork; surface vibration, Mounting Type - Top Plate device; thermoplastic Wheel Center and Wheel Tread; white; Bearing—Ball Bearings.

Wheel surface: thermoplastic  
Wheel Center: thermoplastic

Drawings are for reference only and may differ from the product



Picture may differ from original product

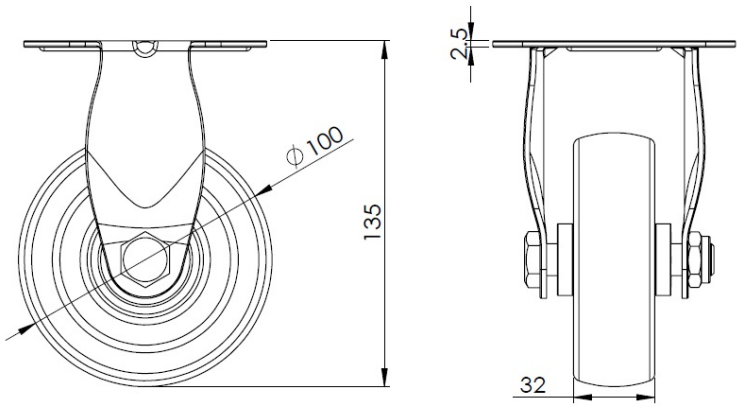
Technical Data

<input checked="" type="radio"/> Imperial <input type="radio"/> Metric	
Wheel Diameter	4 "
Wheel Width	1-5/16 "
Wheel Bearing	Wheel With Plain Bearing
Plate Size	3-13/16 " x 3-13/16 "
Bolt Hole Spacing	2-3/4 " x 2-3/4 "
Plate Hole	9/16 " x 3/8 "
Overall Height	5-7/16 "
Hardness Of Tread	75±5° Shore D
Load Capacity (Dynamic)	265lbs
Load Capacity (Static)	397lbs
Temperature	-4°F to +176°F
Fork Type	Rigid Caster
Stainless	Y
Electrical Conductivity	N/A
Anti-Static	N/A
Weight	1.0lbs
Standard	ISO22883

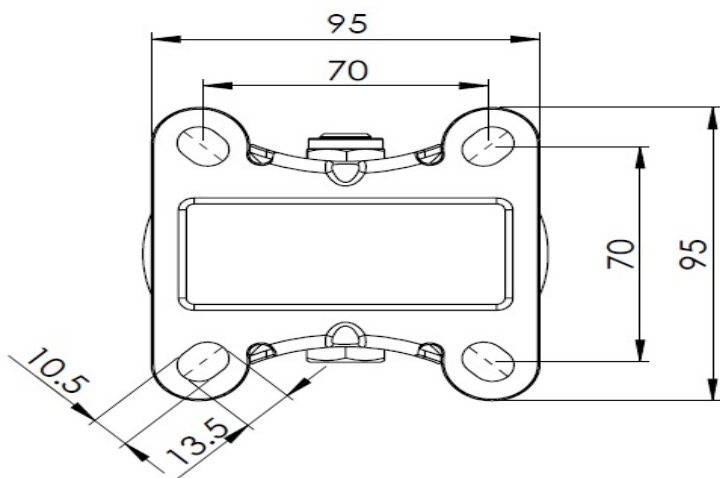
Advantages at a glance

Rolling Resistance	● ● ● ● ●
Operating Noise	● ● ○ ○ ○
Floor Surface Preservation	● ● ○ ○ ○

Dimensions



Mounting



\* For any deviation between metric and imperial spec, please refer to the metric spec.