

1116-SS-MI Medium Duty Institutional Stainless Steel Caster Series



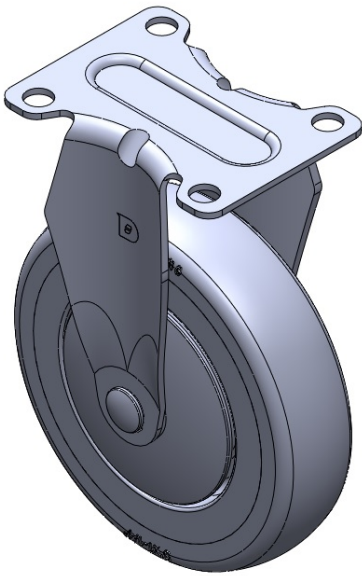
PPR E-conductive Wheel Diameter × Wheel Width 125 x 31mm

EAN  
TW-4111605001023

Rigid Casters, Stamping Fabricated Caster Fork — 72 x 53.5 mm (2-7/8" x 2-1/8") Bolt Hole Spacing Surface vibration, Mounting Type - Top Plate device High-Quality Impact-Resistant Polypropylene Wheel Center, High-Quality Reinforced Polypropylene Rubber (TPR) Wheel Tread Gray, Bearing — Ball Bearings.

Wheel tread: Thermoplastic rubber elastomer (TPR)  
Wheel Center: Made of high-quality impact-resistant polypropylene

Drawings are for reference only and may differ from the product



Picture may differ from original product

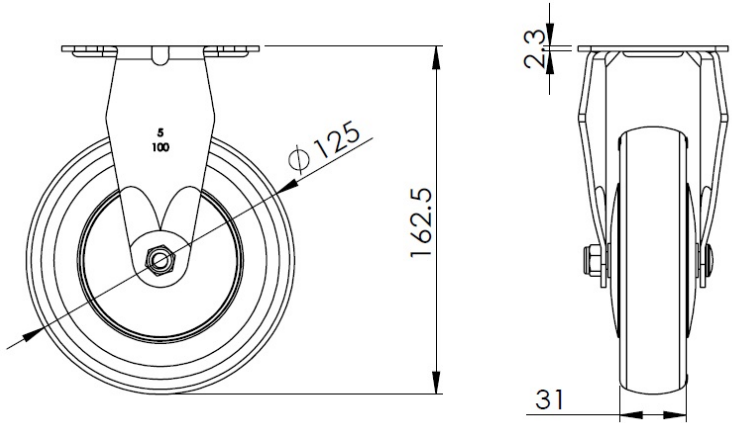
Technical Data

<input checked="" type="radio"/> Imperial <input type="radio"/> Metric	
Wheel Diameter	5 "
Wheel Width	1-1/4 "
Wheel Bearing	Wheels With Ball Bearings
Plate Size	3-5/8 " x 2-13/16 "
Bolt Hole Spacing	2-7/8 " x 2-1/8 "
Plate Hole	3/8 "
Overall Height	6-1/2 "
Hardness Of Tread	82±5° Shore A
Load Capacity (Dynamic)	243lbs
Load Capacity (Static)	364lbs
Temperature	-4°F to +140°F
Fork Type	Rigid Caster
Stainless	Y
Electrical Conductivity	Y 導電値10^4~10^6
Anti-Static	N/A
Weight	1.2lbs
Standard	ISO22883

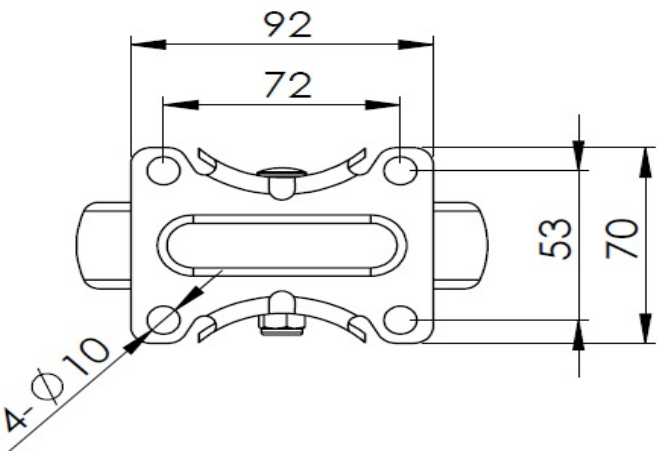
Advantages at a glance

Rolling Resistance	● ● ● ● ○
Operating Noise	● ● ● ● ○
Floor Surface Preservation	● ● ● ● ●

Dimensions



Mounting



\* For any deviation between metric and imperial spec, please refer to the metric spec.