

1116-SS-MI Medium Duty Institutional Stainless Steel Caster Series



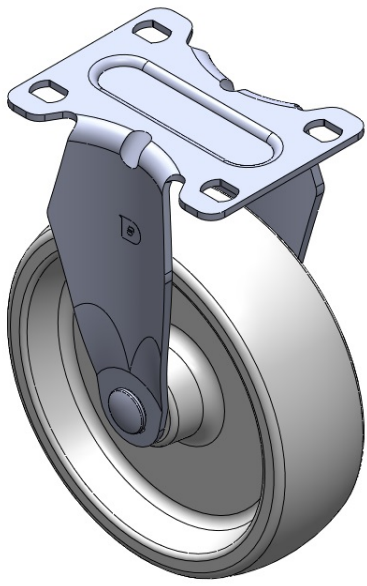
Nylon Wheel Diameter × Wheel Width 125 x 38mm

EAN
TW-4111605001032

Rigid Casters, Stamping Fabricated Caster Fork — high-grade perforation Surface vibration, Mounting Type - Top Plate device Reinforced Polypropylene and Wheel Tread White, wheels — Plain Bearing.

Wheel surface: thermoplastic
Wheel Center: thermoplastic

Drawings are for reference only and may differ from the product



Picture may differ from original product

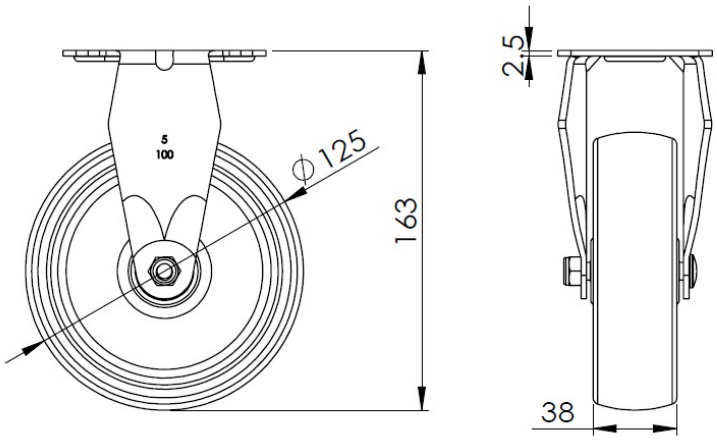
Technical Data

| | |
|--|--------------------------|
| <input checked="" type="radio"/> Imperial <input type="radio"/> Metric | |
| Wheel Diameter | 5 " |
| Wheel Width | 1-1/2 " |
| Wheel Bearing | Wheel With Plain Bearing |
| Plate Size | 3-5/8 " x 2-13/16 " |
| Bolt Hole Spacing | 3 " x 1-13/16 " |
| Plate Hole | 1/2 " x 23/64 " |
| Overall Height | 6-1/2 " |
| Hardness Of Tread | 75±5° Shore D |
| Load Capacity (Dynamic) | 309lbs |
| Load Capacity (Static) | 463lbs |
| Temperature | -4°F to +176°F |
| Fork Type | Rigid Caster |
| Stainless | Y |
| Electrical Conductivity | N/A |
| Anti-Static | N/A |
| Weight | 1.2lbs |
| Standard | ISO22883 |

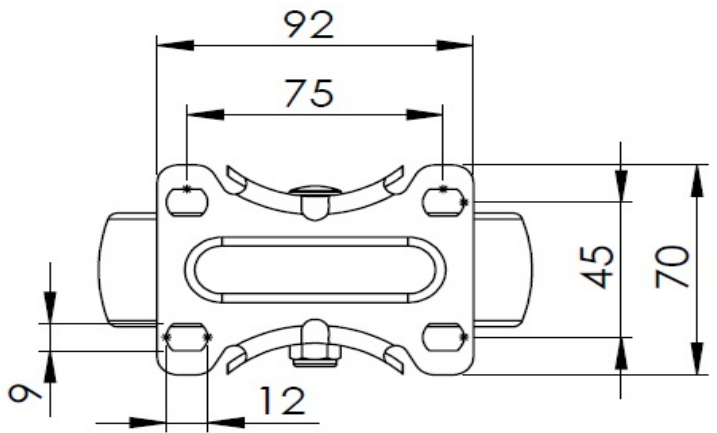
Advantages at a glance

| | |
|----------------------------|-----------|
| Rolling Resistance | ● ● ● ● ● |
| Operating Noise | ● ● ○ ○ ○ |
| Floor Surface Preservation | ● ● ○ ○ ○ |

Dimensions



Mounting



* For any deviation between metric and imperial spec, please refer to the metric spec.