

Product Information Sheet

1116-SS-MI Medium Duty Institutional Stainless Steel Caster Series



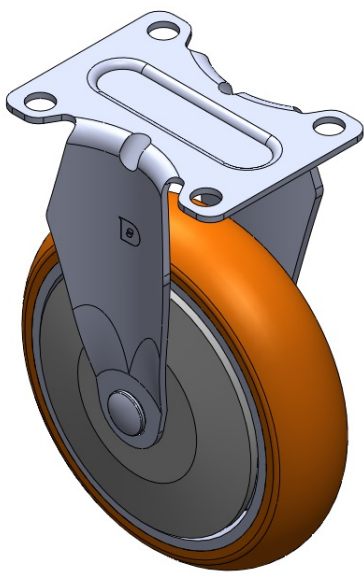
AQPU wheel (brown) Wheel diameter × wheel width 125 x 31mm

EAN  
TW-4111605001035

Rigid Casters, Stamping Fabricated Caster Fork — instrument aperture Surface vibration, Mounting Type - Top Plate device Aluminum wheel center, High Quality Polyurethane Wheel Tread (with plastic cover) Brown, Bearing — Ball Bearings.

Wheel surface: High-quality polyurethane  
Wheel Center: Aluminum core

Drawings are for reference only and may differ from the product



Picture may differ from original product

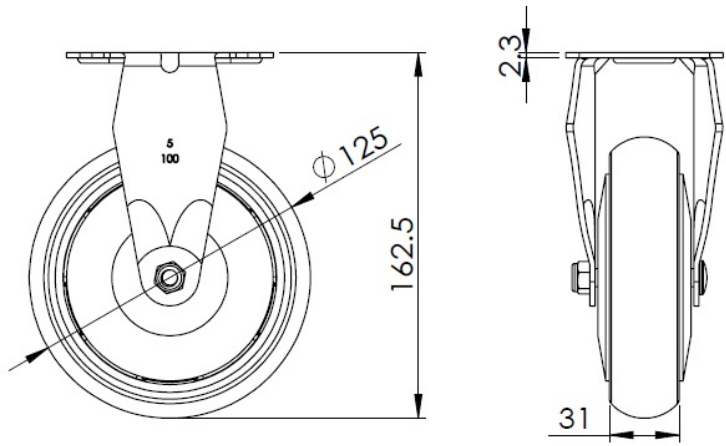
Technical Data

<input checked="" type="radio"/> Imperial <input type="radio"/> Metric	
Wheel Diameter	5 "
Wheel Width	1-1/4 "
Wheel Bearing	Wheels With Ball Bearings
Plate Size	3-5/8 " x 2-13/16 "
Bolt Hole Spacing	2-7/8 " x 2-1/8 "
Plate Hole	3/8 "
Overall Height	6-1/2 "
Hardness Of Tread	92±5° Shore A
Load Capacity (Dynamic)	331lbs
Load Capacity (Static)	496lbs
Temperature	-4°F to +158°F
Fork Type	Rigid Caster
Stainless	Y
Electrical Conductivity	N/A
Anti-Static	N/A
Weight	1.4lbs
Standard	ISO22883

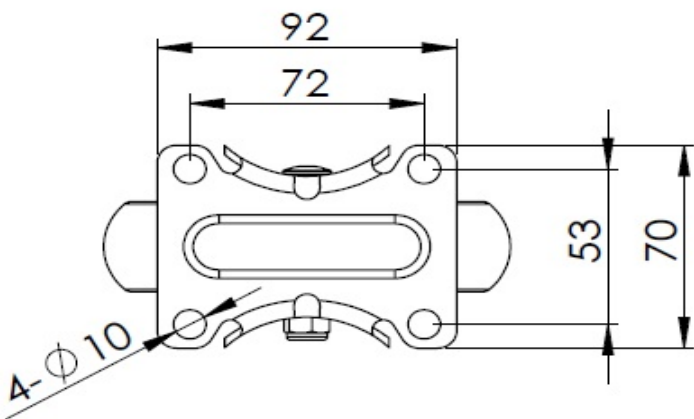
Advantages at a glance

Rolling Resistance	● ● ● ● ●
Operating Noise	● ● ● ● ●
Floor Surface Preservation	● ● ● ● ●

Dimensions



Mounting



\* For any deviation between metric and imperial spec, please refer to the metric spec.