

1116-SS-MI Medium Duty Institutional Stainless Steel Caster Series



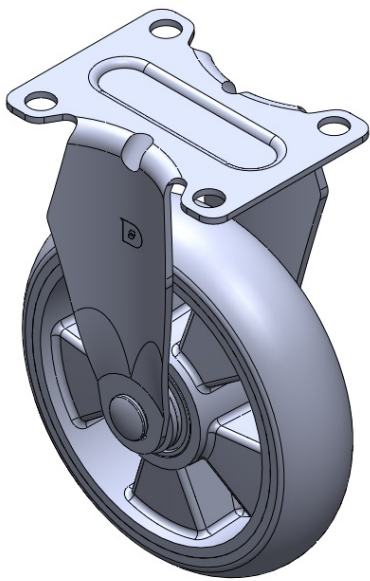
AQPU (grey) Wheel Diameter × Wheel Width 125 x 31mm

EAN
TW-4111605001039

Rigid Casters, Stamping Fabricated Caster Fork — instrument aperture Surface vibration, Mounting Type - Top Plate device Aluminum wheel center, High Quality Polyurethane Wheel Tread Gray, Bearing — Ball Bearings.

Wheel surface: High-quality polyurethane
Wheel Center: Aluminum core

Drawings are for reference only and may differ from the product



Picture may differ from original product

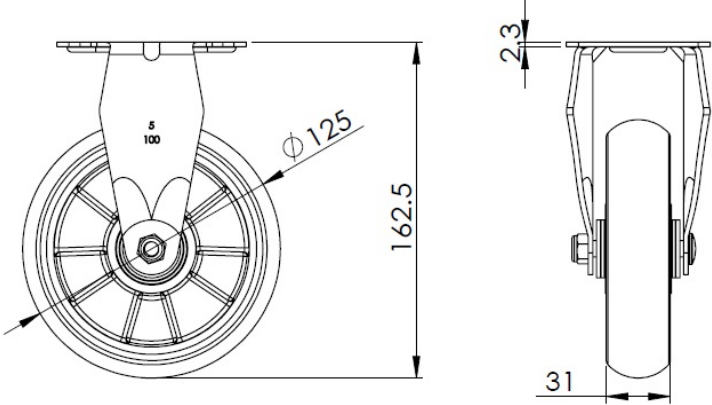
Technical Data

<input checked="" type="radio"/> Metric <input type="radio"/> Imperial	
Wheel Diameter	125mm
Wheel Width	31mm
Wheel Bearing	Wheels With Ball Bearings
Plate Size	92 x 70mm
Bolt Hole Spacing	72 x 53mm
Plate Hole	10mm
Overall Height	162.5mm
Hardness Of Tread	77±5° Shore A
Load Capacity (Dynamic)	150kgs
Load Capacity (Static)	225kgs
Temperature	-20°C to +70°C
Fork Type	Rigid Caster
Stainless	Y
Electrical Conductivity	N/A
Anti-Static	N/A
Weight	0.65kgs
Standard	ISO22883

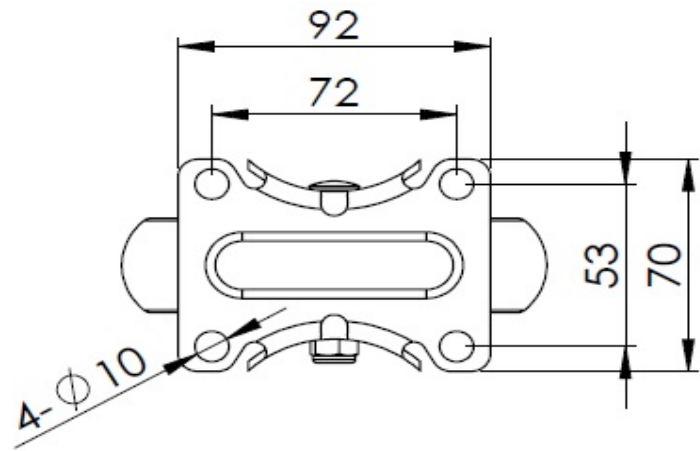
Advantages at a glance

Rolling Resistance	● ● ● ● ●
Operating Noise	● ● ● ● ●
Floor Surface Preservation	● ● ● ● ●

Dimensions



Mounting



* For any deviation between metric and imperial spec, please refer to the metric spec.