

1116-SS-MJ Medium Duty Stainless Steel Caster Series



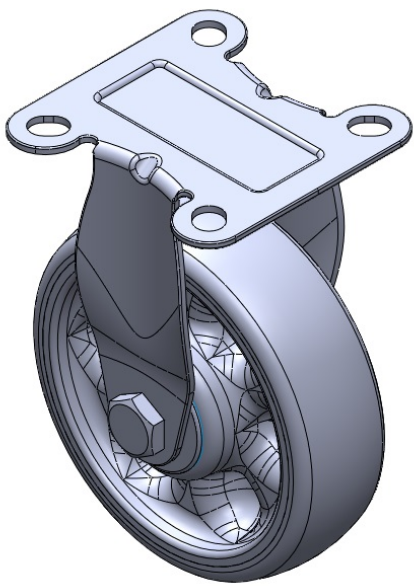
W Resolute (Grey) Wheel Diameter × Wheel Width: 125 x 38mm

EAN  
TW-4111605001040

Rigid Casters, Stamping Fabricated Caster Fork; surface vibration, Mounting Type - Top Plate device; reinforced impact-resistant polypropylene Wheel Center, High-Quality Reinforced Polypropylene Rubber (TPR) Wheel Tread; gray, Bearing—Ball Bearings.

Wheel tread: Thermoplastic rubber elastomer (TPR)  
Wheel Center: Made of high-quality impact-resistant polypropylene

Drawings are for reference only and may differ from the product



Picture may differ from original product

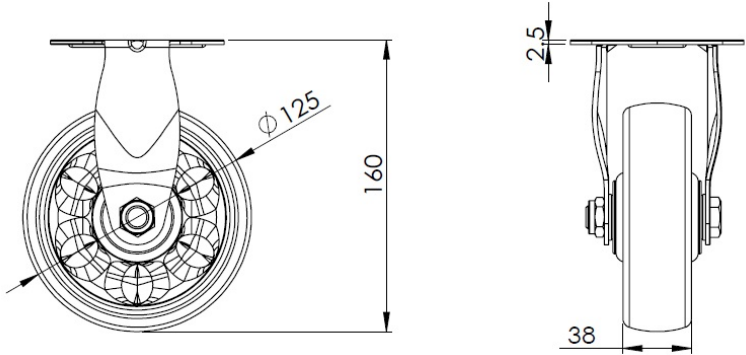
Technical Data

<input checked="" type="radio"/> Metric <input type="radio"/> Imperial	
Wheel Diameter	125mm
Wheel Width	38mm
Wheel Bearing	Wheels With Ball Bearings
Plate Size	95 x 95mm
Bolt Hole Spacing	70 x 70mm
Plate Hole	13.5 x 10.5mm
Offset	54mm
Swivel Interference	260mm
Overall Height	160mm
Swivel Radius	60mm
Hardness Of Tread	72±5° Shore A
Load Capacity (Dynamic)	150kgs
Load Capacity (Static)	225kgs
Temperature	-20°C to +60°C
Fork Type	Rigid Caster
Stainless	Y
Electrical Conductivity	N/A
Anti-Static	N/A
Weight	0.55kgs
Standard	ISO22883

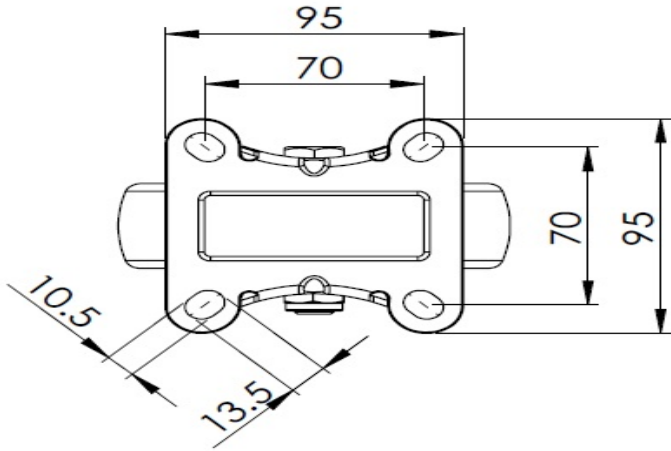
Advantages at a glance

Rolling Resistance	● ● ● ● ●
Operating Noise	● ● ● ● ●
Floor Surface Preservation	● ● ● ● ●

Dimensions



Mounting



\* For any deviation between metric and imperial spec, please refer to the metric spec.