

1116-SS-MJ Medium Duty Stainless Steel Caster Series



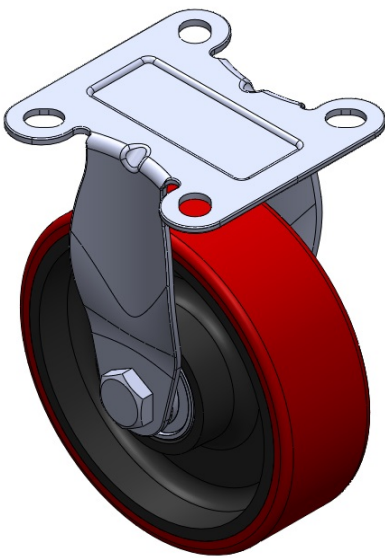
PU (red) Wheel Diameter × Wheel Width 125 x 40mm

EAN  
TW-4111605001047

Rigid Casters, Stamping Fabricated Caster Fork; surface vibration, Mounting Type - Top Plate device; cast iron Wheel Center, High Quality Polyurethane Wheel Tread; red, Bearing—Ball Bearings.

Wheel surface: High-quality polyurethane  
Wheel Center: Iron core / Cast iron core

Drawings are for reference only and may differ from the product



Picture may differ from original product

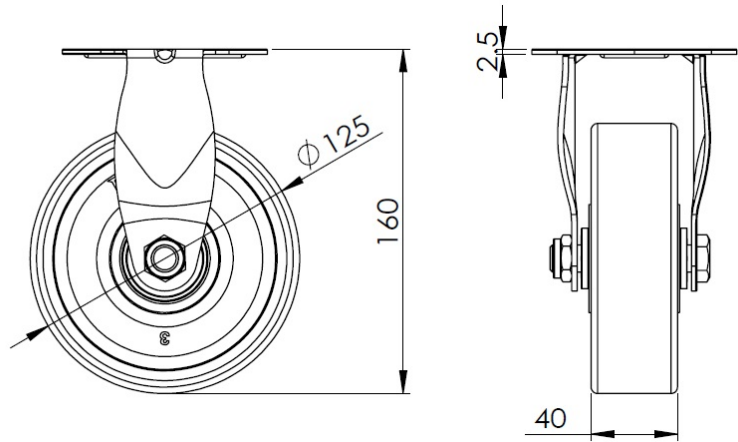
Technical Data

<input checked="" type="radio"/> Imperial <input type="radio"/> Metric	
Wheel Diameter	5 "
Wheel Width	1-5/8 "
Wheel Bearing	Wheels With Ball Bearings
Plate Size	3-13/16 " x 3-13/16 "
Bolt Hole Spacing	2-3/4 " x 2-3/4 "
Plate Hole	9/16 " x 3/8 "
Overall Height	6-3/8 "
Hardness Of Tread	92±5° Shore A
Load Capacity (Dynamic)	331lbs
Load Capacity (Static)	496lbs
Temperature	-4°F to +158°F
Fork Type	Rigid Caster
Stainless	Y
Electrical Conductivity	N/A
Anti-Static	N/A
Weight	2.9lbs
Standard	ISO22883

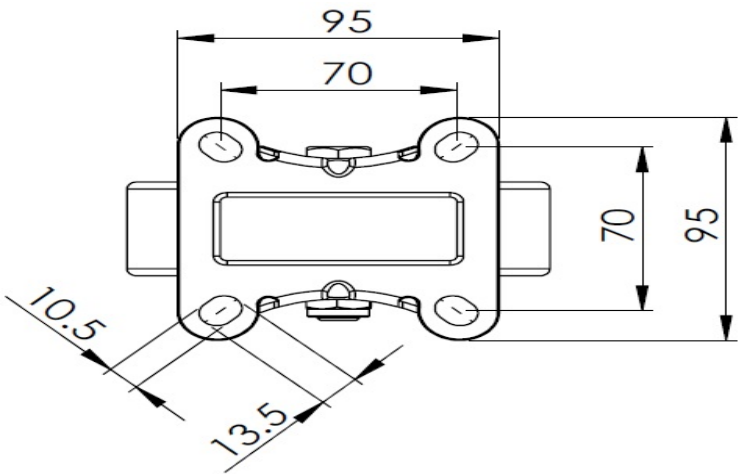
Advantages at a glance

Rolling Resistance	● ● ● ○ ○
Operating Noise	● ● ● ● ○
Floor Surface Preservation	● ● ● ● ○

Dimensions



Mounting



\* For any deviation between metric and imperial spec, please refer to the metric spec.