

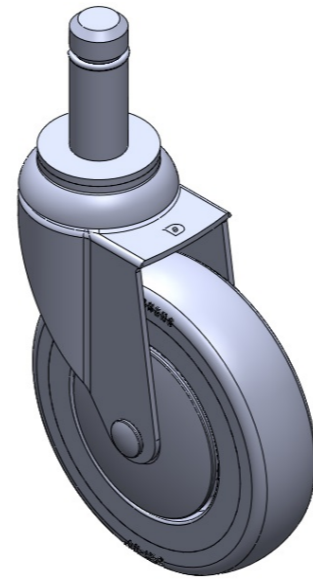
# 1116-SS-MI Medium Duty Institutional Stainless Steel Caster Series



PPR E-conductive Wheel Diameter × Wheel Width 125 x 31mm

EAN

TW-4111605002068



Drawings are for reference only and may differ from the product

Picture may differ from original product

## Technical Data

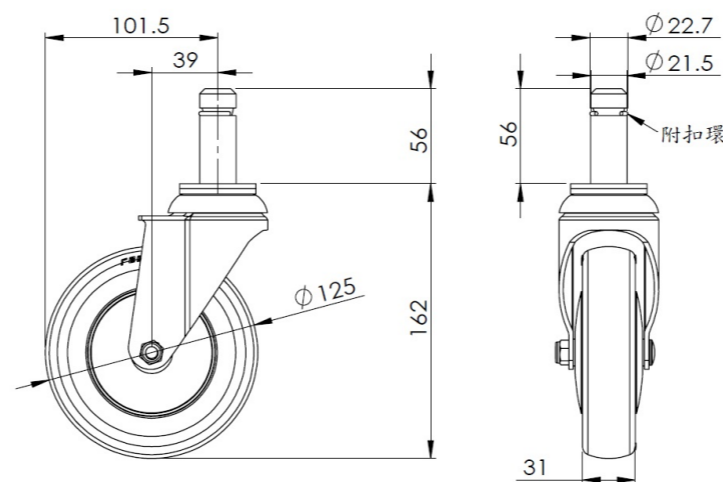
Metric  Imperial

Wheel Diameter	125mm
Wheel Width	31mm
Wheel Bearing	Wheels With Ball Bearings
Stem Diameter	21.5mm
Stem Length	56mm
Offset	39mm
Swivel Interference	203mm
Overall Height	162mm
Swivel Radius	101.5mm
Hardness Of Tread	82±5° Shore A
Load Capacity (Dynamic)	110kgs
Load Capacity (Static)	165kgs
Temperature	-20°C to +60°C
Fork Type	Swivel Caster
Stainless	Y
Electrical Conductivity	Y 導電值10 <sup>4</sup> ~10 <sup>6</sup>
Anti-Static	N/A
Weight	0.85kgs
Standard	ISO22883

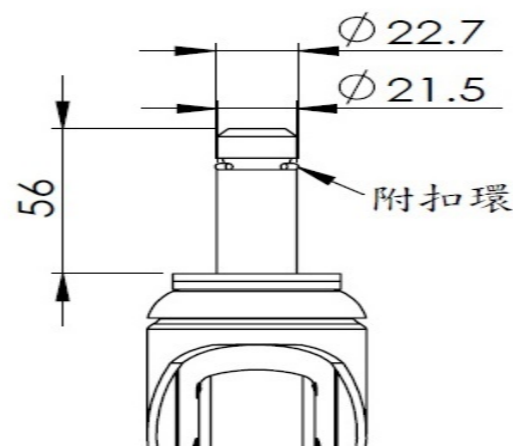
## Advantages at a glance

Rolling Resistance	● ● ● ● ○
Operating Noise	● ● ● ● ○
Floor Surface Preservation	● ● ● ● ●

## Dimensions



## Mounting



\* For any deviation between metric and imperial spec, please refer to the metric spec.