

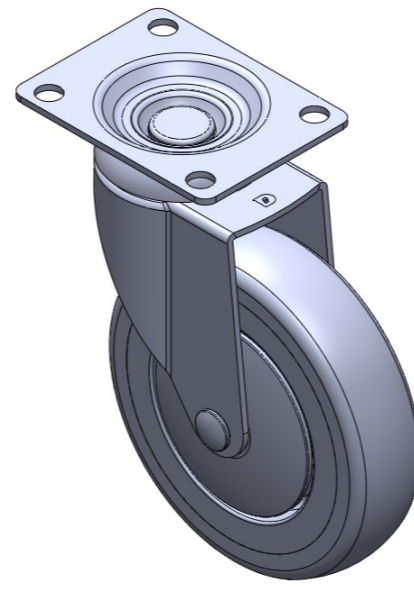
1116-SS-MI Medium Duty Institutional Stainless Steel Caster Series



PPR (S) Wheel Diameter × Wheel Width 125 x 31mm

EAN

TW-4111605002071



Drawings are for reference only and may differ from the product

Picture may differ from original product

Technical Data

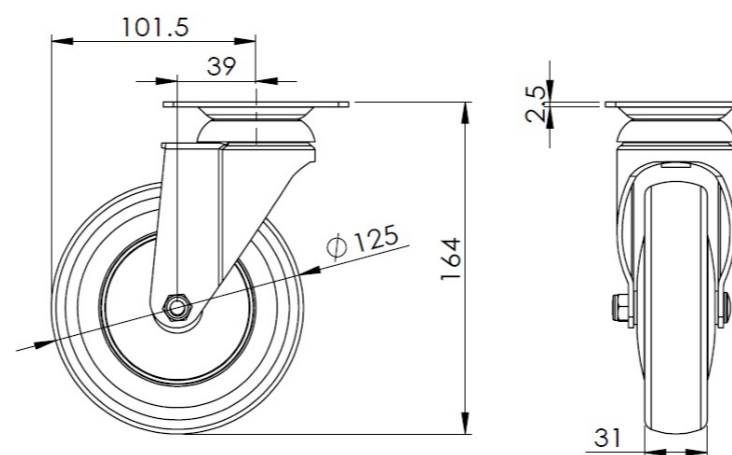
Metric Imperial

| | |
|-------------------------|--------------------------|
| Wheel Diameter | 125mm |
| Wheel Width | 31mm |
| Wheel Bearing | Wheel With Plain Bearing |
| Plate Size | 92 x 70mm |
| Bolt Hole Spacing | 72 x 53 mm |
| Plate Hole | 10mm |
| Offset | 39mm |
| Swivel Interference | 203mm |
| Overall Height | 164mm |
| Swivel Radius | 101.5mm |
| Hardness Of Tread | 82±5° Shore A |
| Load Capacity (Dynamic) | 110kgs |
| Load Capacity (Static) | 165kgs |
| Temperature | -20°C to +60°C |
| Fork Type | Swivel Caster |
| Stainless | Y |
| Electrical Conductivity | N/A |
| Anti-Static | N/A |
| Weight | 0.85kgs |
| Standard | ISO22883 |

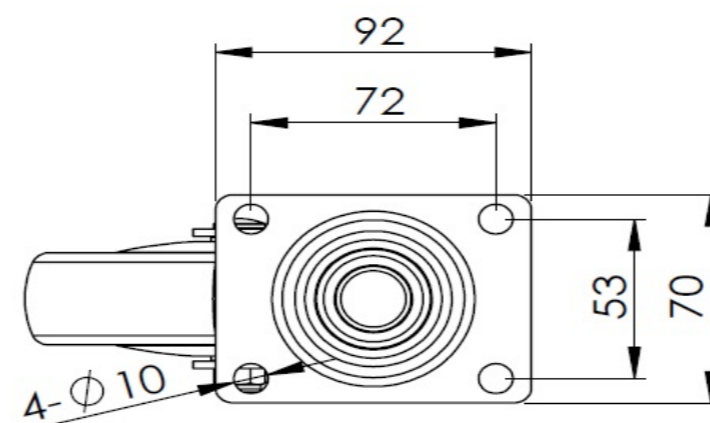
Advantages at a glance

| | |
|----------------------------|-----------|
| Rolling Resistance | ● ● ● ● ○ |
| Operating Noise | ● ● ● ● ○ |
| Floor Surface Preservation | ● ● ● ● ● |

Dimensions



Mounting



* For any deviation between metric and imperial spec, please refer to the metric spec.