

1153-SS Heavy Duty 2" Wide General Purposes  
Stainless Steel Caster Series



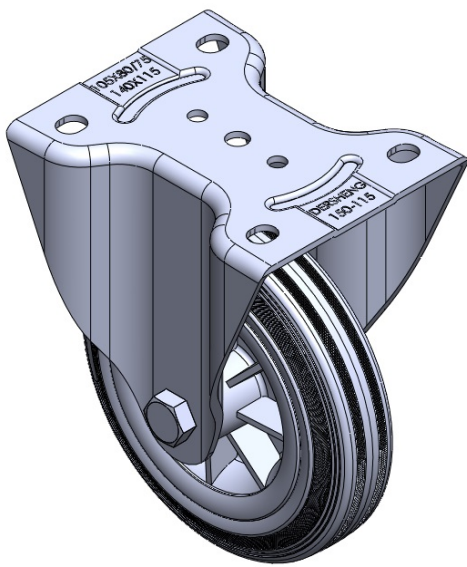
Rubber Wheel Diameter × Wheel Width 150 x 40mm

EAN  
TW-4111606001007

Rigid Casters, Welded Caster Fork; surface vibration, Mounting Type - Top Plate device; plastic Wheel Center, High-Quality Resilient Rubber Wheel Tread; black, Plain Bearings.

Wheel surface: High-quality elastic rubber  
Wheel Center: High-quality elastic rubber

Drawings are for reference only and may differ from the product



Picture may differ from original product

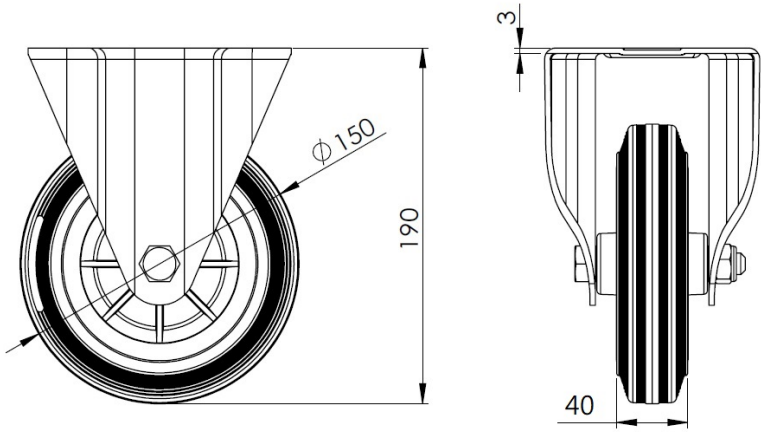
Technical Data

<input checked="" type="radio"/> Metric <input type="radio"/> Imperial	
Wheel Diameter	150mm
Wheel Width	40mm
Wheel Bearing	Wheel With Plain Bearing
Plate Size	140 x 115mm
Bolt Hole Spacing	105 x 77.5mm
Plate Hole	13.5 x 11mm
Overall Height	190mm
Hardness Of Tread	80±5° Shore A
Load Capacity (Dynamic)	125kgs
Load Capacity (Static)	187.5kgs
Temperature	-20°C to +120°C
Fork Type	Rigid Caster
Stainless	Y
Electrical Conductivity	N/A
Anti-Static	N/A
Weight	1.30kgs
Standard	ISO22883

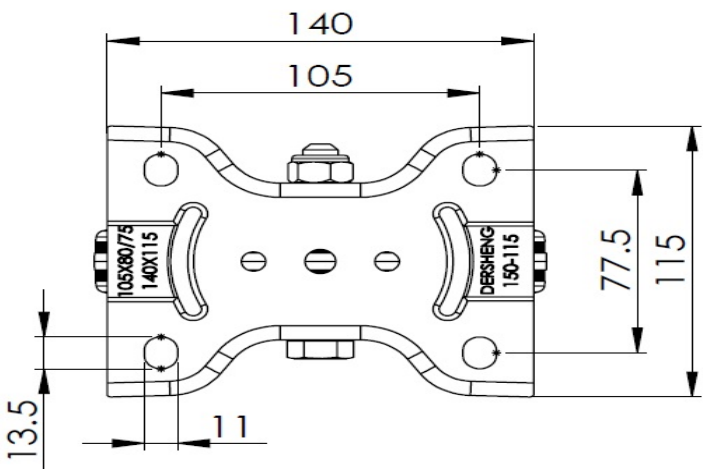
Advantages at a glance

Rolling Resistance	● ● ● ○ ○
Operating Noise	● ● ● ● ○
Floor Surface Preservation	● ● ● ● ○

Dimensions



Mounting



\* For any deviation between metric and imperial spec, please refer to the metric spec.