

1153-SS Heavy Duty 2" Wide General Purposes  
Stainless Steel Caster Series



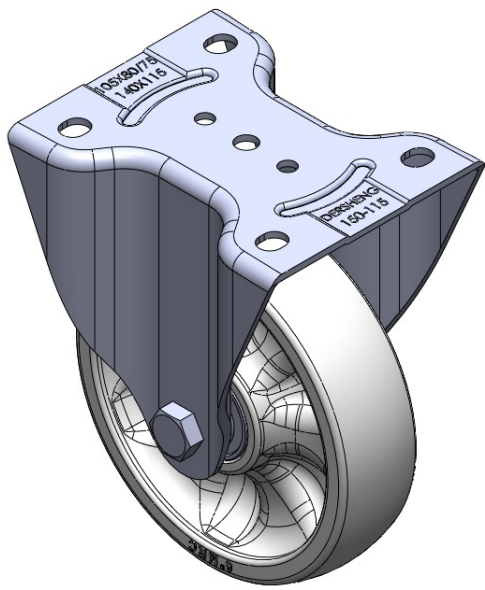
WMRC Wheel Diameter × Wheel Width 150 x 40mm

EAN  
TW-4111606001008

Rigid Casters, Welded Caster Fork. Surface vibration, Mounting Type - Top Plate device. Plastic Wheel Center, High-Quality Resilient Rubber Wheel Tread. White, Bearing—Ball Bearings.

Wheel surface: thermoplastic  
Wheel Center: thermoplastic

Drawings are for reference only and may differ from the product



Picture may differ from original product

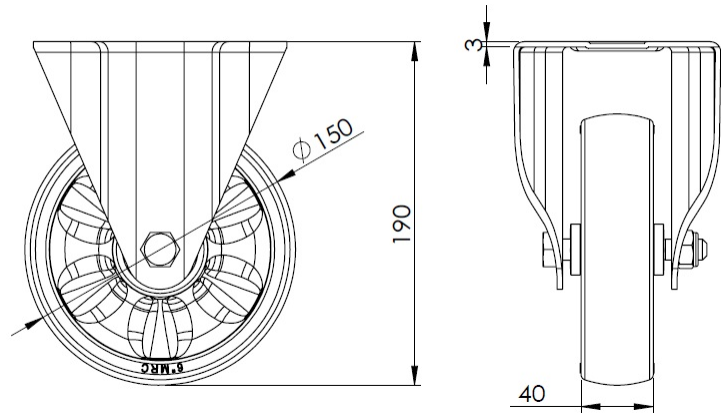
Technical Data

<input checked="" type="radio"/> Imperial <input type="radio"/> Metric	
Wheel Diameter	6 "
Wheel Width	1-5/8 "
Wheel Bearing	Wheels With Ball Bearings
Plate Size	5-9/16 " x 4-9/16 "
Bolt Hole Spacing	4-1/8 " x 3-1/16 "
Plate Hole	9/16 " x 3/8 "
Overall Height	7-1/2 "
Hardness Of Tread	75±5° Shore D
Load Capacity (Dynamic)	772lbs
Load Capacity (Static)	1157lbs
Temperature	-4°F to +176°F
Fork Type	Rigid Caster
Stainless	Y
Electrical Conductivity	N/A
Anti-Static	N/A
Weight	2.6lbs
Standard	ISO22883

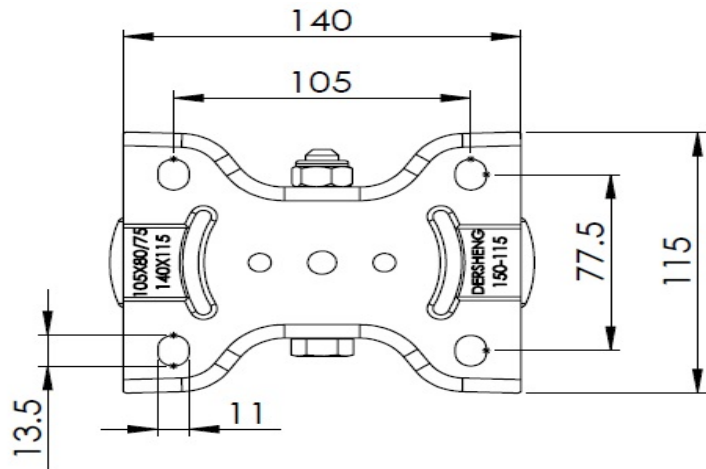
Advantages at a glance

Rolling Resistance	● ● ● ● ●
Operating Noise	● ● ○ ○ ○
Floor Surface Preservation	● ● ○ ○ ○

Dimensions



Mounting



\* For any deviation between metric and imperial spec, please refer to the metric spec.