

Product Information Sheet

1153-SS Heavy Duty 2" Wide General Purposes  
Stainless Steel Caster Series



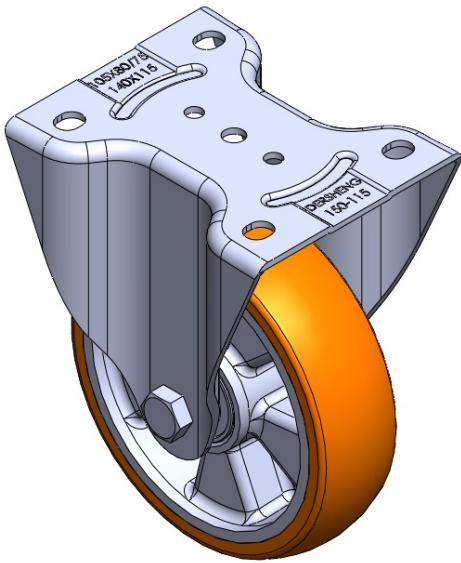
AQPU (brown) Wheel Diameter × Wheel Width 150 x 42mm

EAN  
TW-4111606001010

Rigid Casters, Welded Caster Fork. Surface vibration, Mounting Type - Top Plate.  
Aluminum wheel center, High Quality Polyurethane Wheel Tread. Brown color, Bearing  
—Ball Bearings.

Wheel surface: High-quality polyurethane  
Wheel Center: Aluminum core

Drawings are for reference only and may differ from the product



Picture may differ from original product

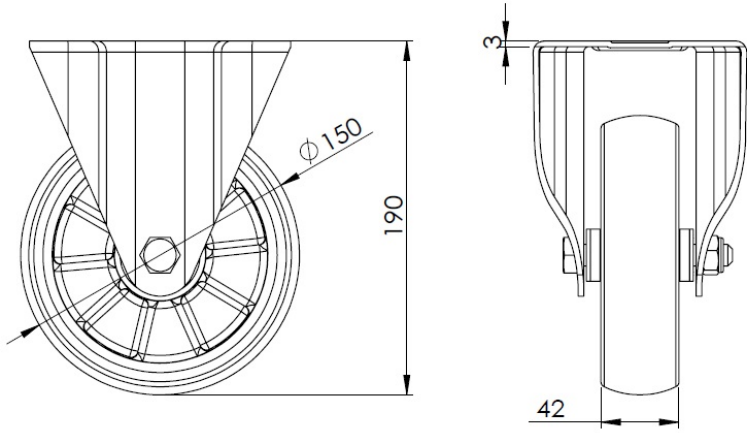
Technical Data

<input checked="" type="radio"/> Metric <input type="radio"/> Imperial	
Wheel Diameter	150mm
Wheel Width	42mm
Wheel Bearing	Wheels With Ball Bearings
Plate Size	140 x 115mm
Bolt Hole Spacing	105 x 77.5mm
Plate Hole	13.5 x 11mm
Overall Height	190mm
Hardness Of Tread	92±5° Shore A
Load Capacity (Dynamic)	350kgs
Load Capacity (Static)	525kgs
Temperature	-20°C to +70°C
Fork Type	Rigid Caster
Stainless	Y
Electrical Conductivity	N/A
Anti-Static	N/A
Weight	1.50kgs
Standard	ISO22883

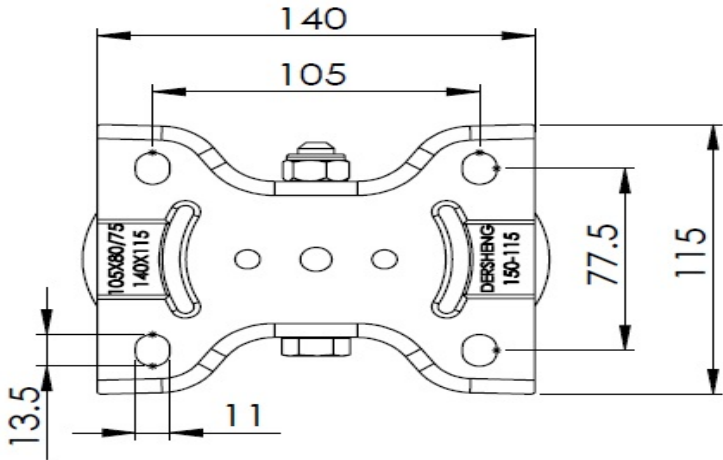
Advantages at a glance

Rolling Resistance	● ● ● ● ●
Operating Noise	● ● ● ● ●
Floor Surface Preservation	● ● ● ● ●

Dimensions



Mounting



\* For any deviation between metric and imperial spec, please refer to the metric spec.