

Product Information Sheet

1153-SS Heavy Duty 2" Wide General Purposes
Stainless Steel Caster Series



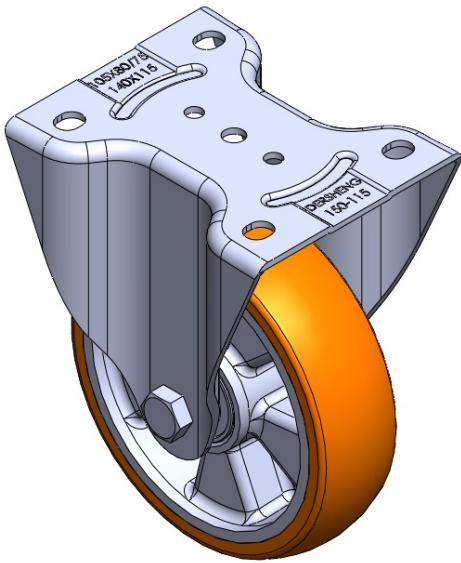
AQPU (brown) Wheel Diameter × Wheel Width 150 x 42mm

EAN
TW-4111606001010

Rigid Casters, Welded Caster Fork. Surface vibration, Mounting Type - Top Plate.
Aluminum wheel center, High Quality Polyurethane Wheel Tread. Brown color, Bearing
—Ball Bearings.

Wheel surface: High-quality polyurethane
Wheel Center: Aluminum core

Drawings are for reference only and may differ from the product



Picture may differ from original product

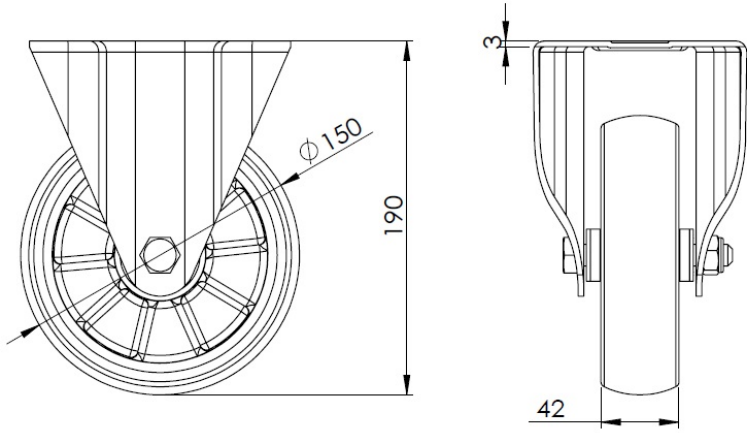
Technical Data

<input checked="" type="radio"/> Imperial <input type="radio"/> Metric	
Wheel Diameter	6 "
Wheel Width	1-11/16 "
Wheel Bearing	Wheels With Ball Bearings
Plate Size	5-9/16 " x 4-9/16 "
Bolt Hole Spacing	4-1/8 " x 3-1/16 "
Plate Hole	9/16 " x 3/8 "
Overall Height	7-1/2 "
Hardness Of Tread	92±5° Shore A
Load Capacity (Dynamic)	772lbs
Load Capacity (Static)	1157lbs
Temperature	-4°F to +158°F
Fork Type	Rigid Caster
Stainless	Y
Electrical Conductivity	N/A
Anti-Static	N/A
Weight	3.3lbs
Standard	ISO22883

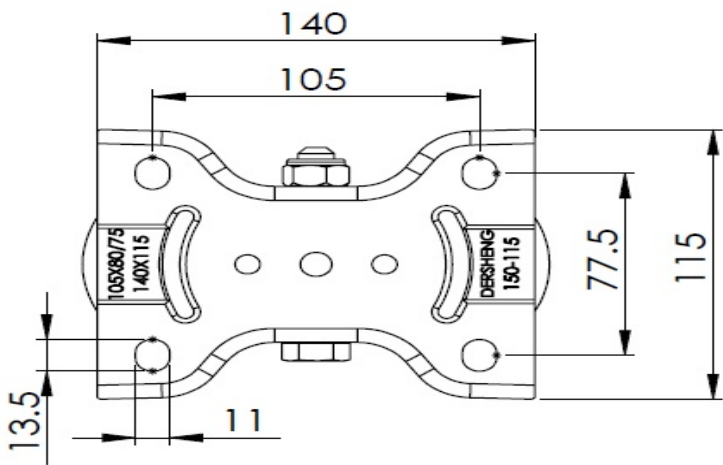
Advantages at a glance

Rolling Resistance	● ● ● ● ●
Operating Noise	● ● ● ● ●
Floor Surface Preservation	● ● ● ● ●

Dimensions



Mounting



* For any deviation between metric and imperial spec, please refer to the metric spec.