

1153-SS Heavy Duty 2" Wide General Purposes
Stainless Steel Caster Series



Rubber wheel (black) Wheel diameter × wheel width 146 x 46mm

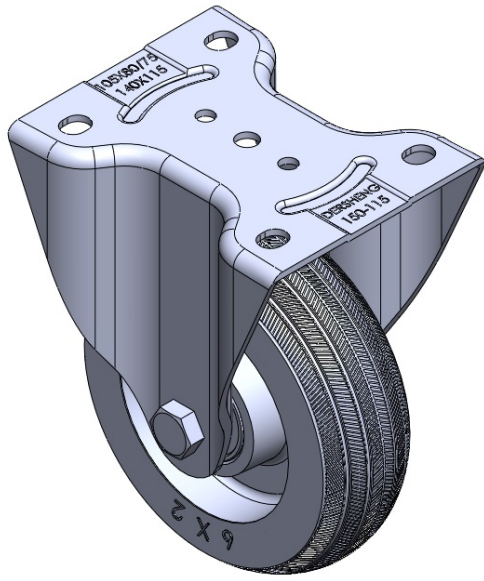
EAN

TW-4111606001011

Rigid Casters, Welded Caster Fork; surface vibration, Mounting Type - Top Plate; cast iron Wheel Center, High-Quality Resilient Rubber rim; black, Bearing—Ball Bearings.

Wheel surface: High-quality elastic rubber
Wheel Center: Iron core/Cast iron core

Drawings are for reference only and may differ from the product



Picture may differ from original product

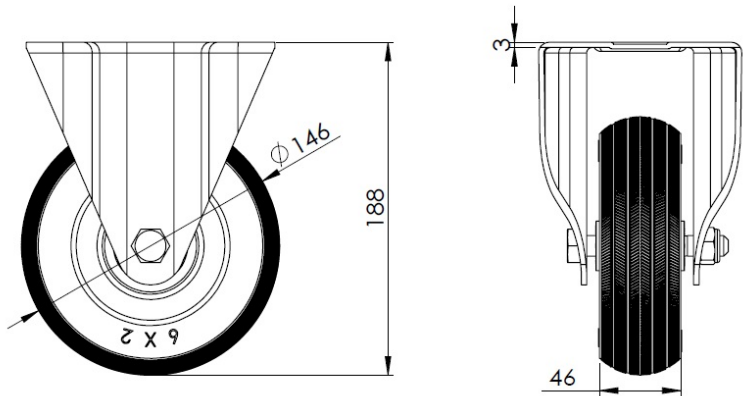
Technical Data

<input checked="" type="radio"/> Metric <input type="radio"/> Imperial	
Wheel Diameter	146mm
Wheel Width	46mm
Wheel Bearing	Wheels With Ball Bearings
Plate Size	140 x 115mm
Bolt Hole Spacing	105 x 77.5mm
Plate Hole	13.5 x 11mm
Overall Height	188mm
Hardness Of Tread	80±5° Shore A
Load Capacity (Dynamic)	125kgs
Load Capacity (Static)	187.5kgs
Temperature	-20°C to +120°C
Fork Type	Rigid Caster
Stainless	Y
Electrical Conductivity	N/A
Anti-Static	N/A
Weight	2.40kgs
Standard	ISO22883

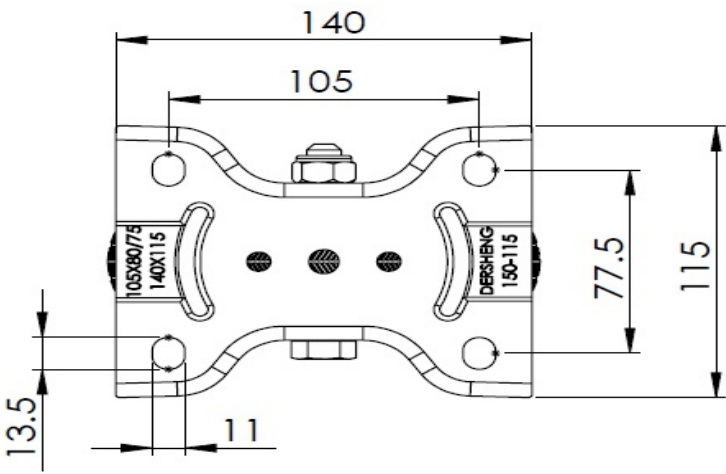
Advantages at a glance

Rolling Resistance	● ● ● ○ ○
Operating Noise	● ● ● ● ○
Floor Surface Preservation	● ● ● ● ○

Dimensions



Mounting



* For any deviation between metric and imperial spec, please refer to the metric spec.