

Product Information Sheet

1153-SS Heavy Duty 2" Wide General Purposes  
Stainless Steel Caster Series



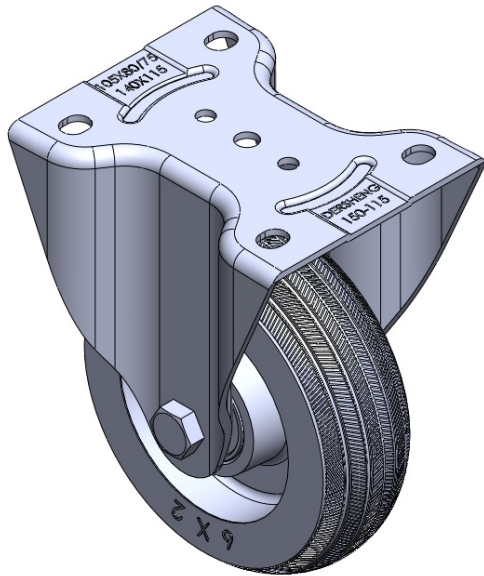
Rubber wheel (black) Wheel diameter × wheel width 146 x 46mm

EAN  
TW-4111606001011

Rigid Casters, Welded Caster Fork; surface vibration, Mounting Type - Top Plate; cast iron Wheel Center, High-Quality Resilient Rubber rim; black, Bearing—Ball Bearings.

Wheel surface: High-quality elastic rubber  
Wheel Center: Iron core/Cast iron core

Drawings are for reference only and may differ from the product



Picture may differ from original product

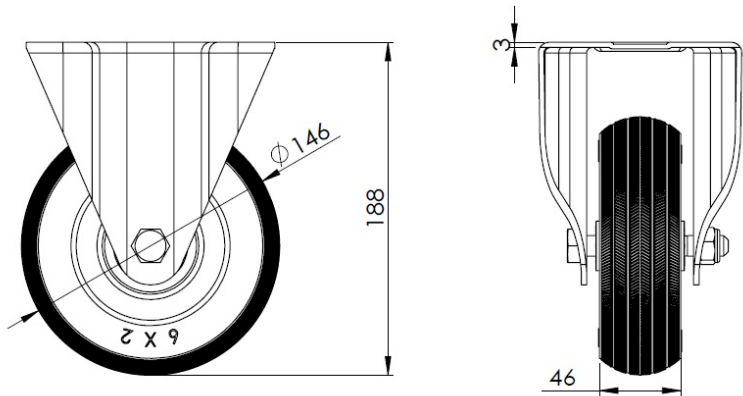
Technical Data

<input checked="" type="radio"/> Imperial <input type="radio"/> Metric	
Wheel Diameter	146mm
Wheel Width	1-7/8 "
Wheel Bearing	Wheels With Ball Bearings
Plate Size	5-9/16 " x 4-9/16 "
Bolt Hole Spacing	4-1/8 " x 3-1/16 "
Plate Hole	9/16 " x 3/8 "
Overall Height	7-1/2 "
Hardness Of Tread	80±5° Shore A
Load Capacity (Dynamic)	276lbs
Load Capacity (Static)	413lbs
Temperature	-4°F to +248°F
Fork Type	Rigid Caster
Stainless	Y
Electrical Conductivity	N/A
Anti-Static	N/A
Weight	5.3lbs
Standard	ISO22883

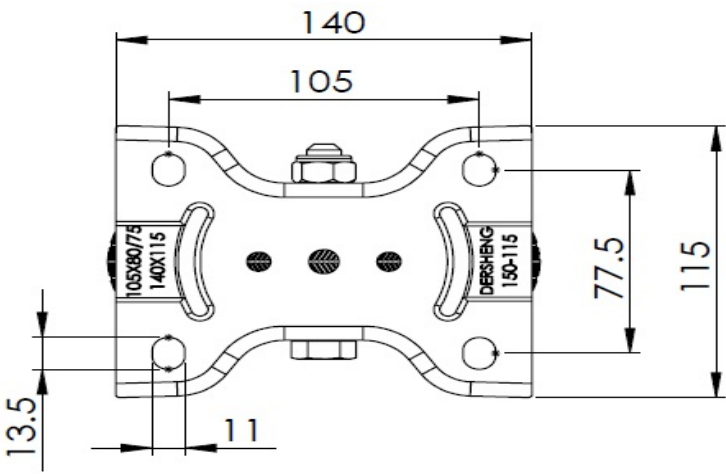
Advantages at a glance

Rolling Resistance	● ● ● ○ ○
Operating Noise	● ● ● ● ○
Floor Surface Preservation	● ● ● ● ○

Dimensions



Mounting



\* For any deviation between metric and imperial spec, please refer to the metric spec.