



1116-SS-B Type B Stainless Steel Series

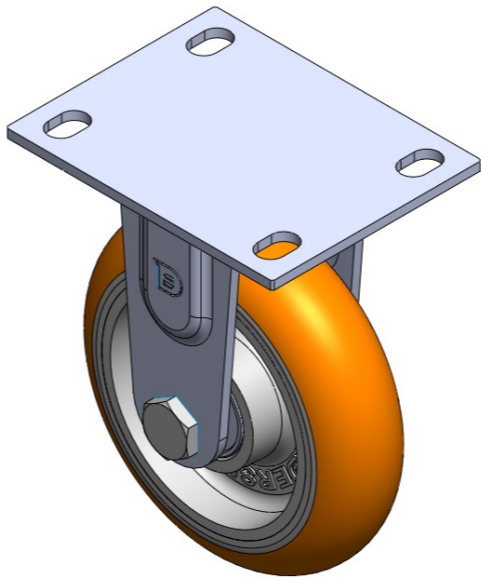
EQPU (brown) Wheel Diameter × Wheel Width 150 x 42mm

EAN  
TW-4111606001014

Rigid Casters, Welded Caster Fork. Surface vibration, Mounting Type - Top Plate device. Cast Iron Wheel Center, High Quality Polyurethane Wheel Tread (extra thick rubber). Brown color, Bearing—Ball Bearings.

Wheel surface: High-quality polyurethane  
Wheel Center: Iron core/Cast iron core

Drawings are for reference only and may differ from the product



Picture may differ from original product

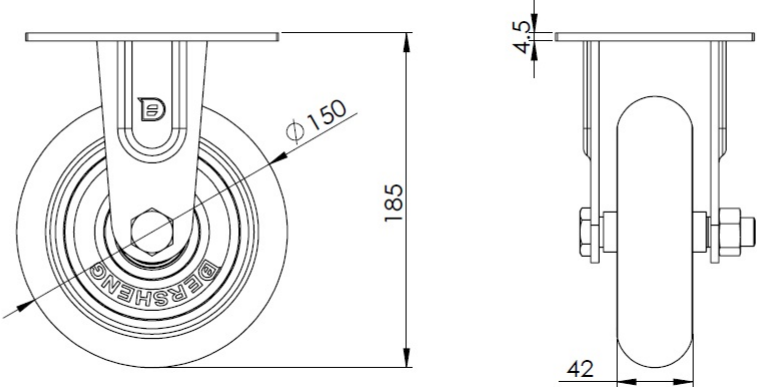
Technical Data

<input checked="" type="radio"/> Imperial <input type="radio"/> Metric	
Wheel Diameter	6 "
Wheel Width	1-11/16 "
Wheel Bearing	Wheels With Ball Bearings
Plate Size	5-9/16 " x 4-3/8 "
Bolt Hole Spacing	4-5/16 " x3"
Plate Hole	13/16 " x 9/16 "
Overall Height	7-3/8 "
Hardness Of Tread	92±5° Shore A
Load Capacity (Dynamic)	1213lbs
Load Capacity (Static)	1819lbs
Temperature	-4°F to +158°F
Fork Type	Rigid Caster
Stainless	Y
Electrical Conductivity	N/A
Anti-Static	N/A
Weight	6.4lbs
Standard	ISO22883

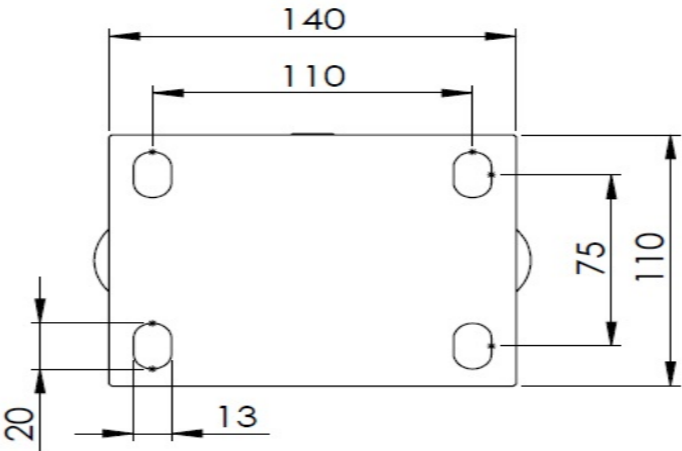
Advantages at a glance

Rolling Resistance	● ● ● ● ●
Operating Noise	● ● ● ● ●
Floor Surface Preservation	● ● ● ● ●

Dimensions



Mounting



\* For any deviation between metric and imperial spec, please refer to the metric spec.