



1116-SS-B Type B Stainless Steel Series

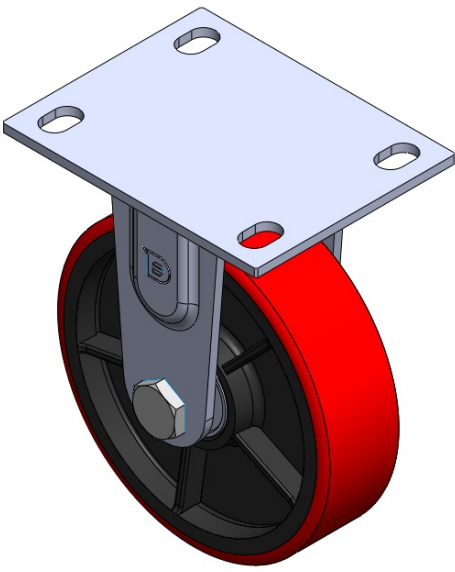
PU wheel (red) Wheel diameter × wheel width 150 x 42mm

EAN  
TW-4111606001015

Rigid Casters, Welded Caster Fork. Surface vibration, Mounting Type - Top Plate device. Cast Iron Wheel Center, High Quality Polyurethane Wheel Tread. Red, Bearing —Ball Bearings.

Wheel surface: High-quality polyurethane  
Wheel Center: Iron core / Cast iron core

Drawings are for reference only and may differ from the product



Picture may differ from original product

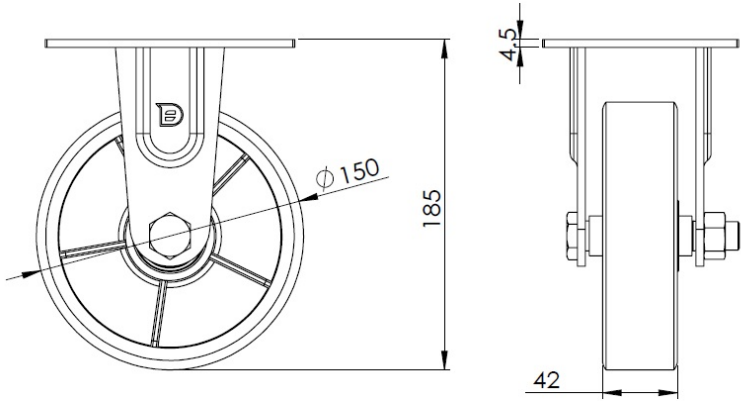
Technical Data

<input checked="" type="radio"/> Metric <input type="radio"/> Imperial	
Wheel Diameter	150mm
Wheel Width	42mm
Wheel Bearing	Wheels With Ball Bearings
Plate Size	140 x 110mm
Bolt Hole Spacing	110x75mm
Plate Hole	20 x 13mm
Overall Height	185mm
Hardness Of Tread	92±5° Shore A
Load Capacity (Dynamic)	410kgs
Load Capacity (Static)	605kgs
Temperature	-20°C to +70°C
Fork Type	Rigid Caster
Stainless	Y
Electrical Conductivity	N/A
Anti-Static	N/A
Weight	2.90kgs
Standard	ISO22883

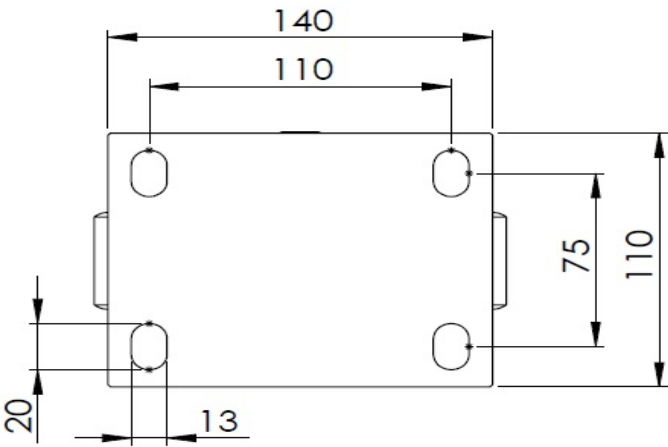
Advantages at a glance

Rolling Resistance	● ● ● ○ ○
Operating Noise	● ● ● ● ○
Floor Surface Preservation	● ● ● ● ○

Dimensions



Mounting



\* For any deviation between metric and imperial spec, please refer to the metric spec.