

1129 Series

Full wheel diameter × wheel width 75 x 31mm

EAN

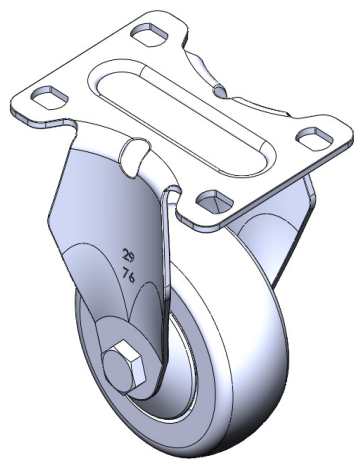
TW-4112903001007

YJ-X11290300261013

Fixed castors, one-piece stamped footrest - advanced holes
Surface plating, baseplate mounting device
Impact-resistant polypropylene wheel core, thermoplastic elastomer (TPR) wheel tread
Dark grey, wheel bearings – precision ball.

Wheel surface: Thermoplastic rubber elastomer (TPR)
Wheel core: Made of high-quality impact-resistant polypropylene

Product descriptions are for reference only. The actual product shall prevail.



Picture may differ from original product

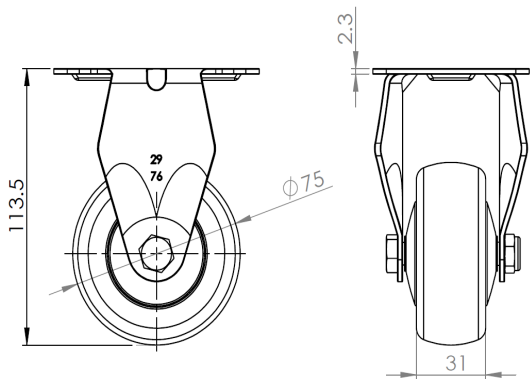
Technical Data

| | |
|--|-----------------------------------|
| <input checked="" type="radio"/> Metric <input type="radio"/> Imperial | |
| Wheel Diameter | 75mm |
| Wheel Width | 31mm |
| Wheel Bearing | wheel equipped with ball bearings |
| Plate size | 92 x 70mm |
| Base plate hole spacing | 75 x 45mm |
| Plate hole | 12 x 9mm |
| Overall height | 113.5mm |
| Hardness of tread | 72±5° Shore A |
| Load capacity (dynamic) | 90kgs |
| Load capacity (static) | 135kgs |
| Temperature | -20°C to +60°C |
| Stand Style | fixed |
| Stainless steel | N/A |
| Conductive | N/A |
| Anti | N/A |
| Weight | 0.4kgs |
| Standard | ISO22883 |

Advantages at a glance

| | |
|----------------------------|-----------|
| Rolling Resistance | • • • • • |
| Operating Noise | • • • • • |
| Floor Surface Preservation | • • • • • |

Dimensions



Mounting

Drawings are for reference only and may differ from the product.

* For any deviation between metric and imperial spec, please refer to the metric spec.